



FOR SALE

HAVEN HOME IN ELEVATED CARINA HEIGHTS

Nestled on a generous 600sqm block in the sought-after suburb of Carina Heights, this impressive 4-bedroom house presents an exceptional opportunity for families seeking space, comfort, and convenience just 10.1km from Brisbane's CBD. This well-appointed residence combines practical living with outdoor entertaining, making it perfect for those who love to host gatherings or simply enjoy a relaxed lifestyle.

Step inside to discover a thoughtfully designed home featuring four generous bedrooms, each equipped with built-in wardrobes for optimal storage solutions. The single bathroom services the home efficiently, while air conditioning ensures year-round comfort throughout the living spaces. Built-in features add functionality and style, creating a home that's both practical and welcoming.

The true highlight of this property lies in its exceptional outdoor offerings. Multiple outdoor entertainment areas provide versatile spaces for dining al fresco, hosting barbecues, or simply unwinding after a busy day.

- Generous 600sqm block offering plenty of space for children and pets
- Courtyard and multiple outdoor entertainment areas
- Practical shed storage solutions
- Single garage parking plus additional space

The property's eco-friendly credentials shine through with solar panels, helping to reduce energy costs while contributing to a sustainable lifestyle. The district aspect ensures pleasant views and a sense of openness, while the mature 600sqm block provides ample room for gardening enthusiasts or those seeking additional outdoor projects.

Carina Heights offers an enviable lifestyle with its elevated position providing cooler breezes and scenic outlooks. The suburb is perfectly positioned between the bustling centres of Carindale and Mount Gravatt, offering residents easy access to major shopping destinations, dining precincts, and entertainment venues. Families will appreciate the proximity to quality educational facilities, with several excellent primary and secondary schools in neighbouring suburbs.

- Close proximity to Carindale and Westfield shopping centres
- Easy access to major transport corridors including the South East Freeway
- Beautiful parklands including the expansive Whites Hill Reserve

3 BED | 1 BATH | 3 CAR

PRICE:
Offers Over \$1.45M!

OPEN FOR INSPECTION:
May 23 at 11:00am - 11:30am



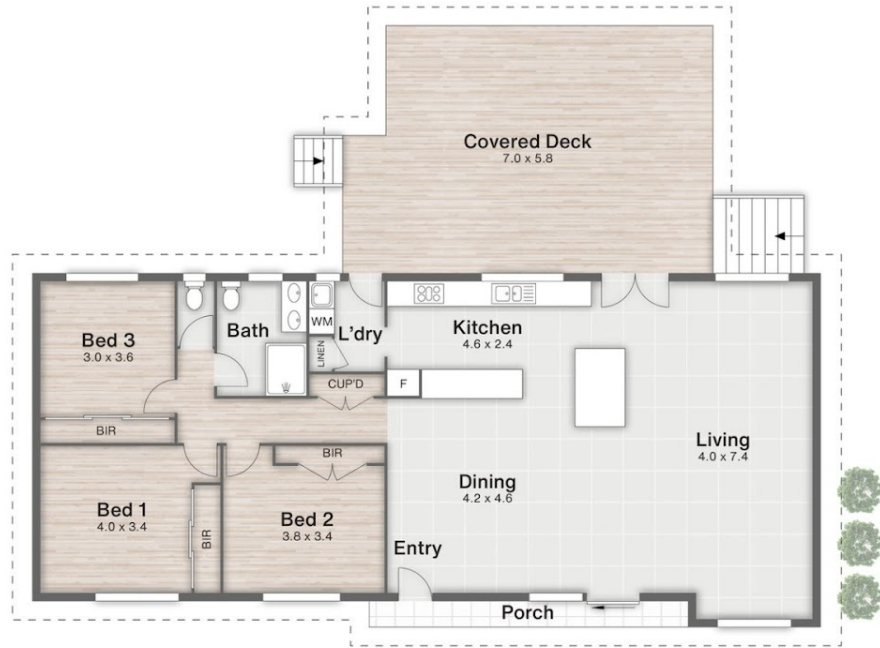
PJ Gholami
0416949167
pj.gholami@kandoorealty.com.au
kandoorealty.com.au



(Not In Position)



(Not In Position)



7 Ormuz Street **CARINA HEIGHTS**

3 | 1 | 186m²

All dimensions are approximate; they are subject to errors and inaccuracies and no liability will be accepted.
Plans are shown for marketing purposes only.



Disclaimer: Please note this floor plan is for marketing purposes and is to be used as a guide only. All dimensions are estimates only and may not be exact measurements.

PJ Gholami
0416949167
pj.gholami@kandoorealty.com.au
kandoorealty.com.au

