



# FOR SALE

## SPACIOUS FAMILY LIVING WITH DRIVE-THROUGH ACCESS & MULTIPLE LIVING AREAS!!!

Set on a generous block, this well-appointed 4 bedroom home offers space, functionality, and a versatile layout ideal for growing families or investors.

All bedrooms include built-in wardrobes and are serviced by a central bathroom complete with a bathtub. The home also features a small office room, perfect for working from home or additional storage.

Designed for comfortable living, the property offers multiple living zones including separate living, dining, and family areas, providing flexibility for everyday life and entertaining. The kitchen is well-equipped with gas cooking and a dishwasher, positioned to service the main living spaces.

Comfort is ensured year-round with a split system air conditioner, while the covered outdoor area provides a great space for entertaining or relaxing.

A standout feature is the drive-through access leading to a double car garage, offering excellent storage and convenience.

### Key Features:

- 4 bedrooms, all with built-in wardrobes
- Central bathroom with bathtub
- Additional small office room
- Separate living, dining, and family areas
- Kitchen with gas cooking and dishwasher
- Split system air conditioning
- Covered outdoor entertaining area
- Drive-through access to double car garage

### Location Highlights:

- Short drive to local shops, schools, hospital, and restaurants
- Easy access to the M1 motorway for commuters

4 BED | 1 BATH | 2 CAR

### PRICE:

\$750,000 - \$820,000

### OPEN FOR INSPECTION:

May 23 at 11:00am - 11:30am

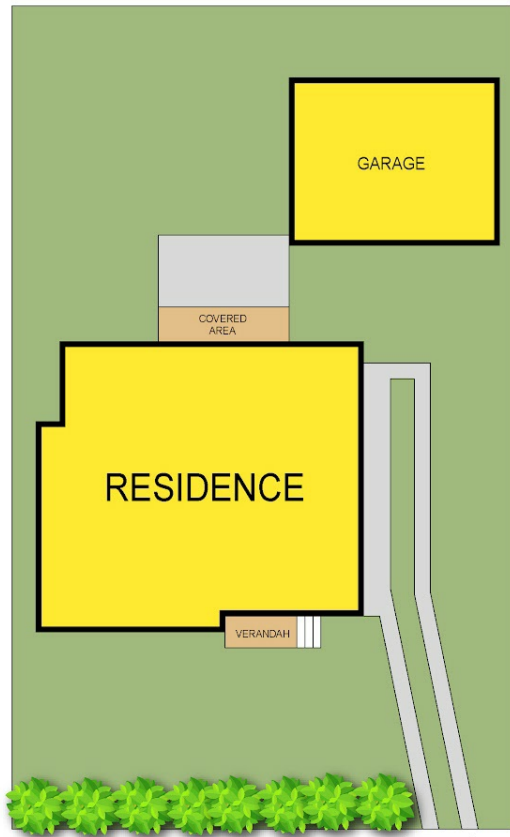
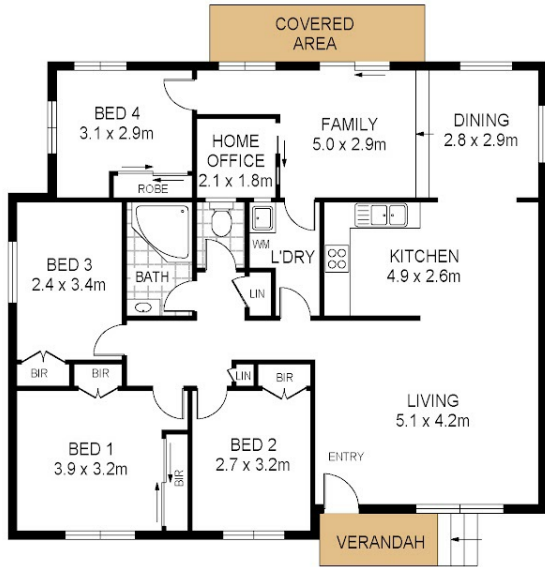
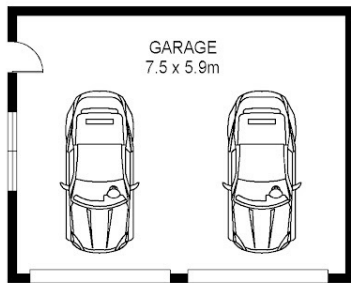


**Thomas Twyford**

**0414002753**

[tomtwyford@atrealty.com.au](mailto:tomtwyford@atrealty.com.au)

[www.atrealty.com.au](http://www.atrealty.com.au)



37 Goorama Avenue  
San Remo



Total Internal Floor Area: 129 sqm (Excluding Garage)

Scale in metres Indicative only. Dimensions are approximate. All information contained herein is gathered from sources we believe to be reliable. However we cannot guarantee its accuracy and interested persons should rely on their own enquiries



Disclaimer: Please note this floor plan is for marketing purposes and is to be used as a guide only. All dimensions are estimates only and may not be exact measurements.