



# FOR SALE

## LUXURIOUS PRIVATE SANCTUARY IN EXCLUSIVE BRIBIE ISLAND LOCALE 5 SEASIDE DRIVE

Crafted to meticulous standards, this amazing home delivers a luxurious sanctuary over two levels in one of Banksia Beach's most coveted streets. This four-bedroom home - with double garage and carport to accommodate your RV - offers light filled space, seclusion and tranquility in the heart of Bribie Island, just minutes from the beach, schools, vibrant shops and public transport.

Delivering a sophisticated and stylish aesthetic, this expansive residence starts with a secure double gated estate like entry with an intercom for automatic opening and room for parking. A beautiful courtyard leads to the double door entrance, all this Yet you have only just Arrived!

An outdoor patio anchors the living and dining rooms where sliding doors open to the alfresco dining for relaxed outdoor entertaining. The sparkling beach effect pool provides the perfect centerpiece in the tropical landscaping.

Upstairs, the massive palatial main bedroom is bathed in natural light with balcony views of the pool. The wide private balcony is perfect for morning coffee or dusk drinks watching the rising moon. A spa bath ensuite with walk-in robe completes the master suite.

### OUTSTANDING FEATURES

- Secure private double gated entry
- Split system air-conditioning with fans throughout the home
- Salt swimming pool
- Indoor/ outdoor living and entertaining area
- Upstairs "Parents Retreat"
- Triple car accommodation - one fits your RV
- Visitors parking
- A chef's kitchen with premium appliances

Natural stone countertops - durable and elegant, custom cabinetry with enamel finish - timeless and easy to clean, and large ceramic tile floors, make this kitchen warm, durable and low

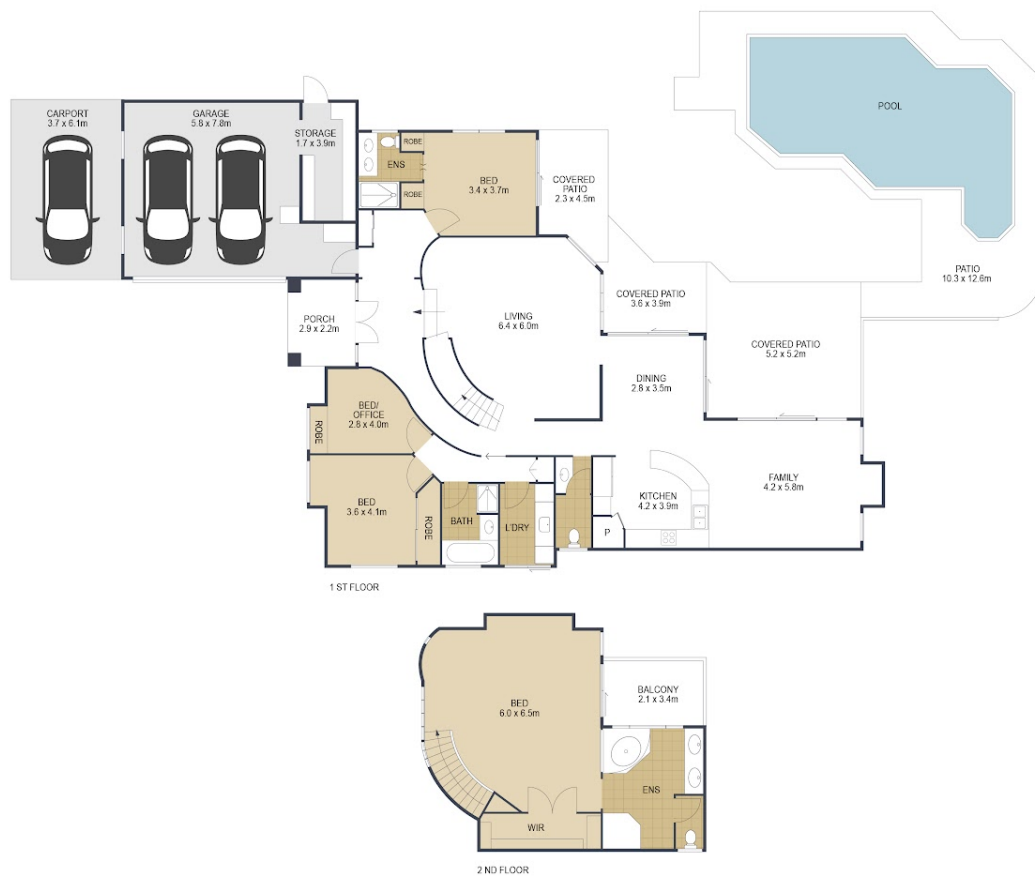
4 BED | 3 BATH | 3 CAR

PRICE:  
For Sale! Contact ELENA

OPEN FOR INSPECTION:  
N/A



**Elena Stevens**  
**0415230521**  
elena@esre.com.au  
www.esre.com.au



	4
	3
	3
<b>TOTAL: 409 m<sup>2</sup></b>	

## 5 Seaside Drive **BANKSIA BEACH**

ARTIST'S IMPRESSION ONLY: While every attempt has been made to ensure the accuracy of this floor plan's areas and measurements of doors, windows, rooms and all other items are approximate and no responsibility is taken for any error, omission, or mis-statement. This plan is for illustrative purposes only and should only be used as such by any prospective purchaser. Floor plan by: [www.open2view.com.au](http://www.open2view.com.au)

Disclaimer: Please note this floor plan is for marketing purposes and is to be used as a guide only. All dimensions are estimates only and may not be exact measurements.