



FOR SALE

FEEL THE SERENITY

This magnificent five-bedroom, two-bathroom family home sits perfectly on an expansive 4.9-hectare (approximately 12-acre) just five minutes drive on the Bass Highway in Wonthaggi, offering an extraordinary lifestyle opportunity that combines rural tranquillity with convenient accessibility only 5 minutes drive to Wonthaggi and 10 minutes drive to Inverloch. Perfectly positioned for families seeking space, privacy, and with endless possibilities, this impressive double-storey residence delivers exceptional value in one of Victoria's most sought-after coastal regions.

Step inside this thoughtfully designed home and discover a world of comfort across two generous levels. The five spacious bedrooms provide ample accommodation for large families or those requiring flexible living arrangements, while the dedicated study offers the perfect space for working from home or pursuing hobbies. Built-in storage solutions throughout ensure every belonging has its place, maintaining the home's clean and organised aesthetic.

The heart of this home revolves around entertaining and family living. A separate rumpus room creates the ideal retreat for children or guests, while the main living areas flow seamlessly to accommodate both intimate family gatherings and larger celebrations. Air conditioning ensures year-round comfort, making every season enjoyable within these walls.

- Five generous bedrooms plus dedicated study
- Two full bathrooms servicing the expansive floor plan
- Double-storey design maximising views and natural light
- Rumpus room for additional family entertainment
- Built-in storage solutions throughout

The outdoor lifestyle opportunities are simply extraordinary. A sparkling swimming pool takes centre stage in the entertainment area, creating the perfect focal point for summer gatherings and year-round relaxation. The elevated balcony provides stunning vantage points across the sprawling grounds, while the fully fenced property ensures complete privacy and security for children and pets.

Practical amenities abound with multiple sheds providing extensive storage for tools, machinery, or workshop activities. Four carport spaces ensure ample covered parking for multiple vehicles, boats, or caravans, making this property ideal for those with diverse transportation needs or

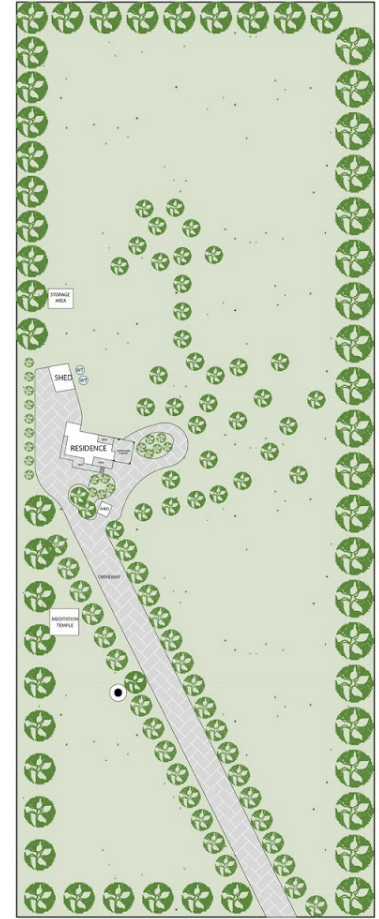
5 BED | 2 BATH | 4 CAR

PRICE:
\$1,495,000

OPEN FOR INSPECTION:
N/A



Christine Thorne
0407831214
christinethorne@atrealty.com.au
www.atrealty.com.au



5300 Bass Hwy, Wonthaggi, VIC, 3995

Whilst every attempt has been made to ensure the accuracy of the floor plan contained here, measurements of doors, windows, rooms and any other items are approximate and no responsibility is taken for any error, omission, or misstatement. This plan is for illustrative purposes only and should be used as such by any prospective purchaser.

Disclaimer: Please note this floor plan is for marketing purposes and is to be used as a guide only. All dimensions are estimates only and may not be exact measurements.