

FOR LEASE

SPACIOUS 5BR FAMILY HAVEN ON A LARGE BLOCK

Nestled on a large block in the heart of Morayfield, this impressive 5-bedroom house offers the perfect blend of space, comfort, and convenience for growing families seeking room to breathe. Located on Bridges Road, this substantial family home sits just 45 kilometres north of Brisbane CBD, providing the ideal escape from city life while maintaining excellent connectivity to urban amenities.

Step inside this well-appointed residence and discover five generous bedrooms complemented by three full bathrooms, creating the perfect layout for busy households. The thoughtful design maximises both privacy and functionality, ensuring every family member has their own space to unwind and recharge.

The true star of this property is undoubtedly the magnificent block—a rare find in today's market offering endless possibilities, whether you're dreaming of creating expansive gardens and outdoor entertainment areas or simply enjoying the luxury of space and privacy.

This semi-rural haven delivers on all fronts while maintaining suburban convenience. Morayfield's strategic location along the Bruce Highway ensures seamless access to Brisbane, the Sunshine Coast, and beyond, making it perfect for commuters who value both connectivity and tranquillity.

Families will appreciate the suburb's excellent educational offerings, with multiple state schools including Morayfield State School, Minimbah State School, and Morayfield East State School, plus the highly regarded Morayfield State High School with over 1,600 students. The nearby Carmichael College provides private education options from Prep to Year 12.

Daily conveniences are well catered for with Morayfield Shopping Centre just minutes away, offering comprehensive retail, dining, and service options. The suburb's position in the Burpengary Creek catchment adds to its natural appeal, while heritage sites like the historic Oaklands Sugar Mill speak to the area's rich agricultural past.

Transportation couldn't be more convenient, with Morayfield railway station providing regular Queensland Rail services to Brisbane, Ipswich, Caboolture, and the Sunshine Coast. The

5 BED | 3 BATH | 4 CAR

PRICE:

\$1,025 per week

OPEN FOR INSPECTION:

May 23 at 9:00am - 9:20am

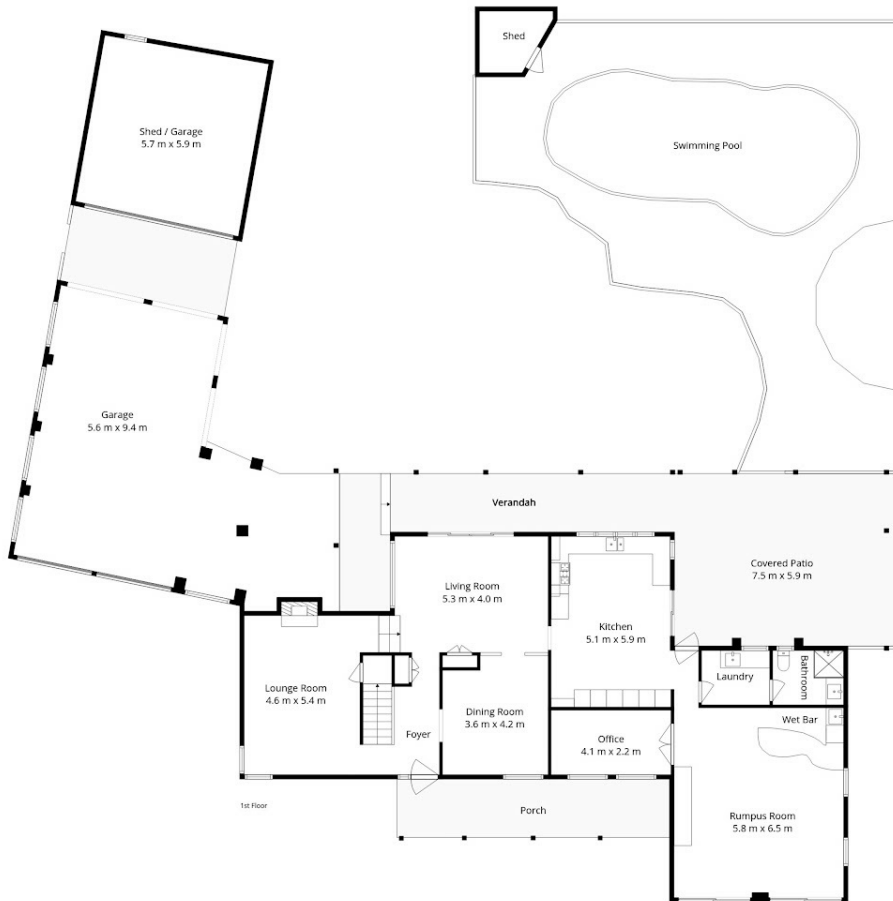


Janice Minihan

0436391146

janicem@atrealty.com.au

www.atrealty.com.au



2 / 22 Bridges Road, Morayfield

Total Area: Approx. 461m²

Every attempt has been made to ensure the accuracy of these plans, however they should be used as a guide only. Prospective purchasers should make their own enquiries.



Disclaimer: Please note this floor plan is for marketing purposes and is to be used as a guide only. All dimensions are estimates only and may not be exact measurements.

