

FOR SALE

PREMIUM POSITION IN QUIET CUL-DE-SAC

Set at the top of one of Springwood's most elevated and tightly held cul-de-sacs, this is a location-driven opportunity with real upside.

Positioned on 785m², the layout offers good natural separation, multiple living zones, and direct connection to the outdoor area overlooking the in-ground pool. It's practical and primed for a value-add renovation.

What sets this apart is the location. Walking distance to John Paul College and Springwood State High, with bushwalking tracks and parkland nearby — it's a quiet, established pocket that continues to attract long-term owner-occupiers.

Approx. 25 minutes to Brisbane CBD
Approx. 40 minutes to the Gold Coast
Easy access to the M1 for north and south travel

Key Features:

- Tightly held cul-de-sac position
- 4 bedrooms including master with ensuite
- 2 bathrooms
- Double lock-up garage
- Multiple living areas
- In-ground pool with private outlook
- 785m² block
- Walk to John Paul College & Springwood High
- Close to parkland and bush trails
- Strong access to Brisbane and Gold Coast

A well-built home in a standout location, offering immediate livability with scope to make it your own.

Don't let your future self have regrets that you missed out on this cracking opportunity!

*Photos have been digitally staged

Disclaimer: While every effort has been made to ensure the accuracy of these particulars, no

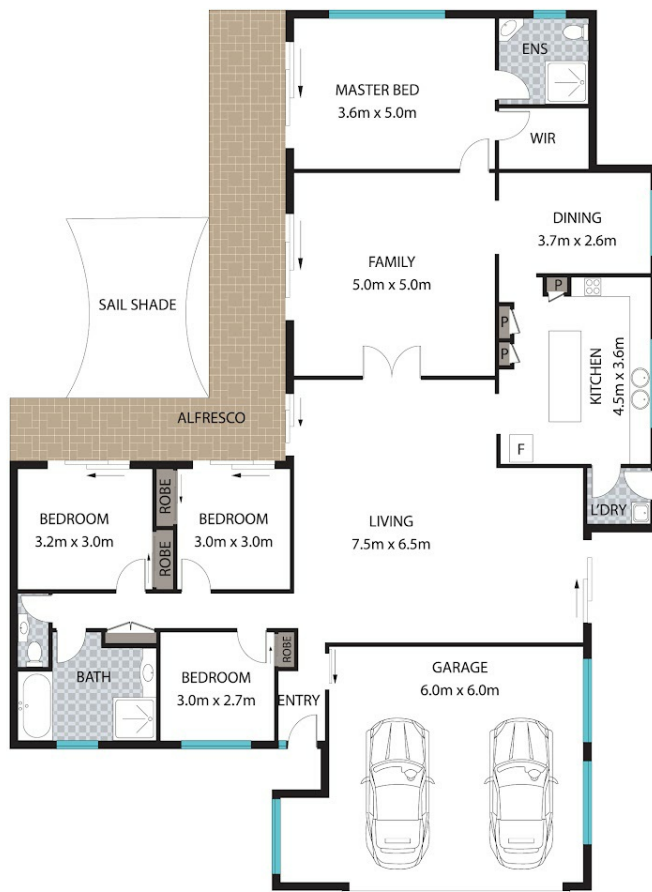
4 BED | 2 BATH | 2 CAR

PRICE:
By Negotiation

OPEN FOR INSPECTION:
N/A



Glen Stevens
0417070693
glen@creamproperty.com.au



0 1 2 3 4 5

Scale in metres. Indicative only. Dimensions are approximate. All information contained herein is gathered from sources we believe to be reliable. However, we cannot guarantee its accuracy and interested persons should rely on their own enquiries.

INT: 220 m²
EXT: 40 m²



5 Gumtree Court, Springwood

Disclaimer: Please note this floor plan is for marketing purposes and is to be used as a guide only. All dimensions are estimates only and may not be exact measurements.