

# FOR SALE

## RESORT STYLE LIVING – ENORMOUS CONTEMPORARY FAMILY HOME ADJOINING STATE FOREST -13M LONG CARPORT WITH HIGH ROOFED PARKING FOR CARAVAN & BOAT

This striking and quality-built 40+SQ (374sqm) "McCarthy Home" offers amazing living and entertaining spaces, dramatic street appeal, and that definite WOW factor, all adjoining the tree studded backdrop of Bunyaville Conservation Park. This impressive and well-maintained family home effortlessly blends contemporary style with family functionality, designed with focus around entertaining and relaxation. This spacious home comprises 5 bedrooms, 3 bathrooms, and seamless indoor-outdoor living where the lounge, dining, meals, family and rumpus rooms all overlook and flow with ease out to the stunning entertaining alfresco, huge turfed yard and private pool areas. On a level 850sqm block at the end of an elevated cul-de-sac, the orientation of this home is perfect, boasting forest views and an ideal Northerly aspect for winter warmth and cool summer breezes through all living spaces and outdoor areas. A unique feature sure to impress caravan or boat owners, or those with lots of extra vehicles, is the large double garage and 13+ metre long carport with 3.58 - 3.86 metre height clearance, where the current owner easily reverses in his 8-metre-long caravan and work ute.

From the front of the home, the grand portico and double door entry foyer welcome you with high ceilings, display niches and fresh paintwork internally throughout. Step left into the quiet lounge area, overlooking the lush front gardens and tall palms set behind a solid security fence and gate. The lounge flows seamlessly across rich new flooring into the formal dining, with kitchen servery bench one side and a large picture window on the opposite side, for an expansive outlook across the lawn, pool and forest. The dining, with feature wall cut-outs, opens to an enormous open plan space with a tiled meals and family area and separate rumpus / media room with double cavity sliding doors. These living areas feature wide windows allowing ample natural light, cooling breezes and the beautiful outdoor views to pour in, with glass sliding doors onto the entertaining alfresco.

The generous and well-appointed kitchen will become the focus point when entertaining, central to and in sight of all living areas, including the pool, yard and alfresco. The kitchen's modern shape, double door walk-in pantry, ceiling bulkhead with downlighting directly over the benches, and ample storage and bench space will make it a pleasure to prepare meals in

5 BED | 3 BATH | 4 CAR

PRICE:

Best Offer Over \$1,950,000

OPEN FOR INSPECTION:

May 23 at 10:00am - 11:00am

May 23 at 1:00pm - 2:00pm

May 24 at 10:00am - 11:00am

May 24 at 1:00pm - 2:00pm



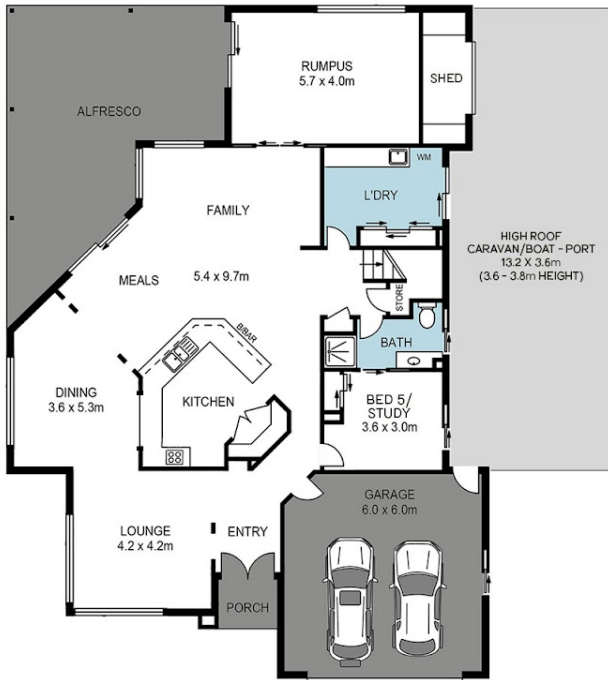
**Len Worthington**

**0402297355**

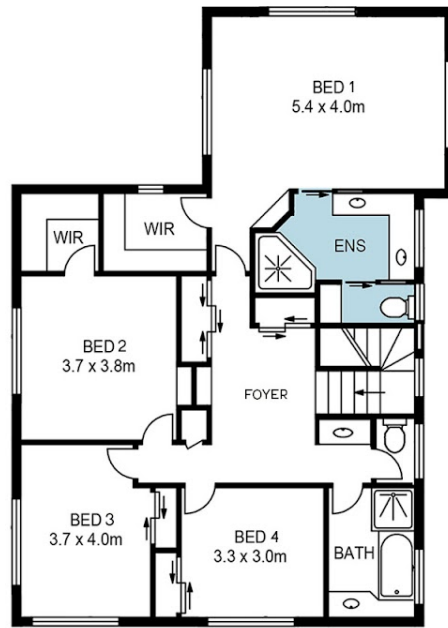
len@lenworthingtonproperties.com.au

lenworthingtonproperties.com.au

# 27 BUNYAVILLE CLOSE, ARANA HILLS



**ENTRY LEVEL**



**UPPER LEVEL**



Measurements are indicative only. Plans should not be relied on. Interested parties should make and rely on their own enquiries.

Disclaimer: Please note this floor plan is for marketing purposes and is to be used as a guide only. All dimensions are estimates only and may not be exact measurements.