



FOR SALE

HOME WITH SHED ON LARGE BLOCK IN CENTRAL KINGAROY

Set on a generous 1,060m² block in a quiet and extremely central, flood free part of Kingaroy, 40 Albert Street offers a cute cottage, on a large block, in a highly convenient location, yet at an affordable price point.

Positioned just metres from the hospital, close to St Mary's College, a stone's throw from the CBD, and a short walk to everything, this is a practical home with a great deal going for it.

The home features two bedrooms, one bathroom, a separate lounge and a large eat-in kitchen with pantry. Polished floors run throughout, with ceiling fans and older air-conditioning units in the living area and bedrooms. The bathroom was re-tiled recently, and includes a shower over bath and toilet. A separate laundry is in the downstairs part of the house.

Outside, the fully fenced yard includes high fencing on all sides, a double Colourbond shed (not powered), plus a small garden shed, and a small rainwater tank.

- 1,060m² block in a quiet, central location close to Hospital
- Two-bedroom, one-bathroom home with polished floors and AC
- Large eat-in kitchen with pantry and ample storage
- Separate lounge with ceiling fan and air conditioning
- Recently re-tiled bathroom with shower over bath
- Fully fenced yard with high fencing on all sides
- Double Colourbond shed plus additional garden shed
- Small rainwater tank and fireplace in lounge
- Walk to hospital, schools, CBD and shopping

Rental appraisal \$450-470 per week.

This home would be perfect for a nurse, a teacher, retirees, a small family, renovators and flippers, or someone looking for a smart investment.

Offers close Thursday 21 May at 3pm.

2 BED | 1 BATH | 2 CAR

PRICE:

O/O \$399,999 Contact Julian

OPEN FOR INSPECTION:

May 18 at 4:00pm - 4:30pm

May 20 at 4:00pm - 4:30pm

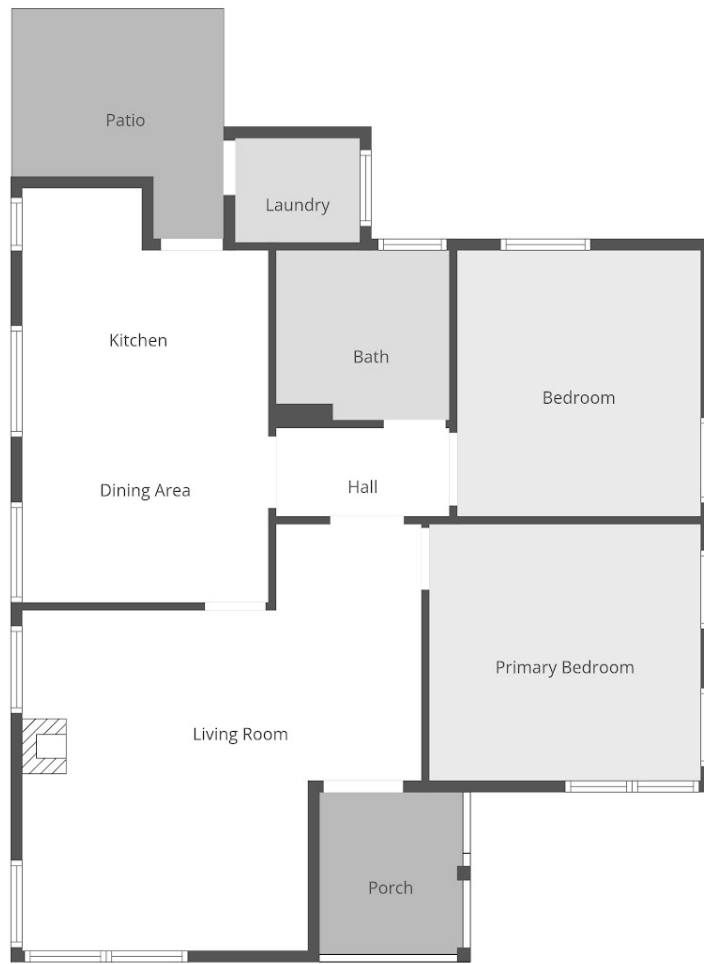


Julian Gregson

0421577537

julian.gregson@atrealty.com.au

www.juliangregson.com.au



Floor plan is provided as indicative layout only. Measurements are not available, floor plan is not to scale. No guarantees provided on accuracy. Exterior elements are not in position

Disclaimer: Please note this floor plan is for marketing purposes and is to be used as a guide only. All dimensions are estimates only and may not be exact measurements.

Julian Gregson
0421577537
julian.gregson@atrealty.com.au
www.juliangregson.com.au

