



## FOR LEASE

### LUXURY HARBOUR DRIVE LIVING – SPACIOUS 340SQM DUAL LEVEL RESIDENCE

Positioned in one of Coffs Harbour's most convenient and sought-after locations, this expansive and low-maintenance residence offers an exceptional opportunity for large families, executive living or combined living arrangements.

Spanning approximately 340sqm across two impressive levels, the property features flexible living zones, dual access and quality finishes throughout, all just moments from the Jetty precinct, Health Campus and Coffs Harbour CBD.

#### Property Features:

- 4 spacious bedrooms with built-in wardrobes
- Luxury master suite complete with ensuite
- 2nd Bedroom complete with ensuite
- Large 5th bedroom or additional living area flexibility
- Dedicated study/home office
- Media room or separate family retreat
- Modern oversized kitchen with ample storage and bench space
- 2 well-appointed bathrooms
- Multiple living areas over two levels
- Solar power system helping minimise electricity costs
- Double lock-up garage with rear access via James Lane
- Additional access from Harbour Drive
- Low-maintenance lifestyle living

#### Prime Location:

- Minutes to Coffs Harbour Jetty precinct
- Close to Coffs Harbour Health Campus
- Easy access to cafes, restaurants and shopping
- Convenient to schools and beaches
- Positioned in the heart of Coffs Harbour

Ideal for professionals seeking space and separation, extended families, or those looking for flexible dual living potential in a premium central location.

5 BED | 3 BATH | 2 CAR

#### PRICE:

\$1,300 per week

#### OPEN FOR INSPECTION:

N/A



**Simon McPherson**

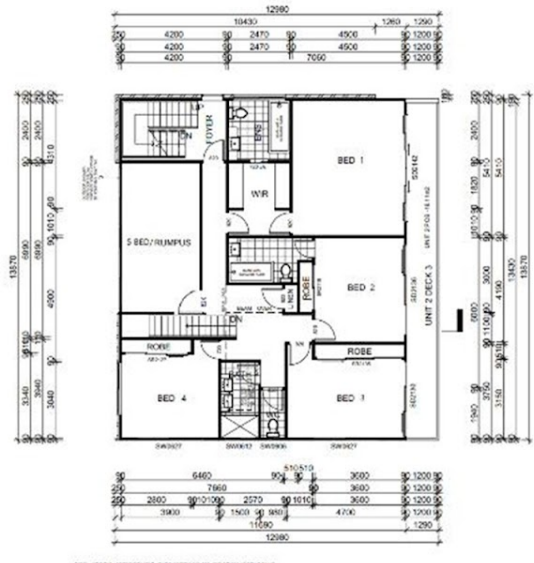
**0432073130**

[simonmcpherson@atrealty.com.au](mailto:simonmcpherson@atrealty.com.au)

[www.atrealty.com.au](http://www.atrealty.com.au)



1 First floor UNIT 2  
1 : 100



1 Second floor UNIT 2  
1 : 100

## 2 / 258 Harbour Drive Coffs Harbour NSW 2450

Disclaimer: Please note this floor plan is for marketing purposes and is to be used as a guide only. All dimensions are estimates only and may not be exact measurements.