



FOR SALE

3-BEDROOM QUALITY BOUTIQUE TOWNHOUSE IN PETRIE - VACANT OCCUPANCY

Nestled in the heart of Petrie's thriving community, this immaculate 3-bedroom, 2-bathroom townhouse at Petrie Courts presents an exceptional opportunity for families seeking the perfect blend of modern comfort and convenience. With secure single garage parking and thoughtfully designed living spaces, this property offers everything you need for contemporary Queensland living.

Step inside to discover a well-appointed home that maximises both space and functionality. The three generous bedrooms provide comfortable accommodation for the whole family, while two full bathrooms ensure morning routines run smoothly. The townhouse design offers privacy and low-maintenance living without compromising on space or quality.

Location is everything, and this property delivers in spades. Petrie has transformed from its agricultural roots into one of Southeast Queensland's most sought-after residential areas, perfectly positioned between Brisbane and the Sunshine Coast.

Families will appreciate the excellent educational opportunities right on your doorstep:

- Petrie State School and Kurwongbah State School for primary education
- Our Lady of the Way Catholic School offering faith-based learning
- Mt Maria College Petrie providing secondary education options
- University of the Sunshine Coast Moreton Bay campus for tertiary studies

The transport connections are simply outstanding. Petrie Railway Station provides direct access to Brisbane CBD, Ipswich, Caboolture, and the Sunshine Coast, while the new Redcliffe Peninsula line connects you to Kippa-Ring. Whether you're commuting to work or exploring Queensland's attractions, everything is within easy reach.

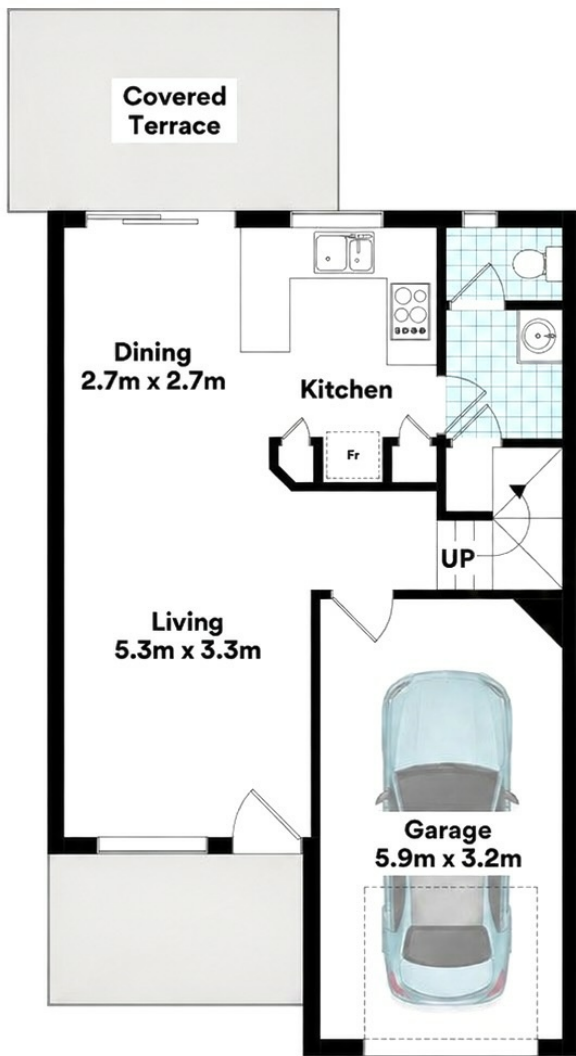
3 BED | 2 BATH | 1 CAR

PRICE:
For Sale

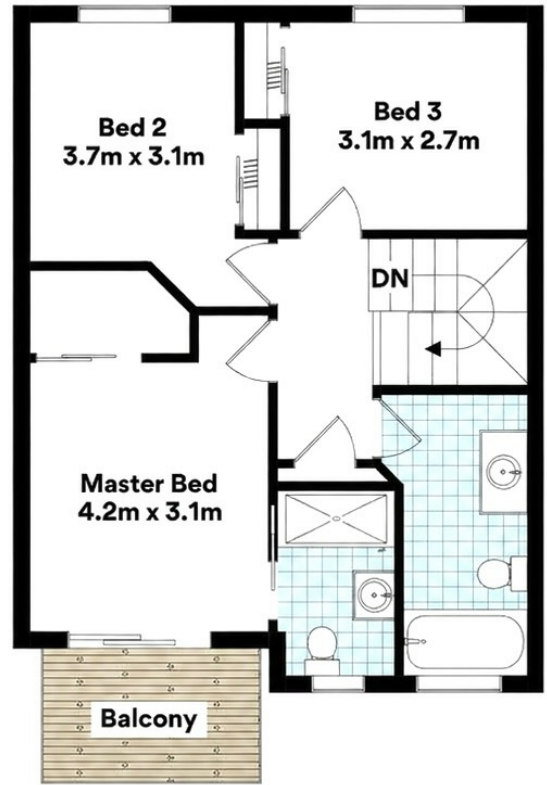
OPEN FOR INSPECTION:
N/A



Frontline Properties
0452426095
fpa@atrealty.com.au
www.atrealty.com.au



GROUND FLOOR



FIRST FLOOR

Disclaimer: Please note this floor plan is for marketing purposes and is to be used as a guide only. All dimensions are estimates only and may not be exact measurements.