



FOR SALE

INVEST IN GROWTH: 58 WHITLEY ST

Looking for a solid entry point or a strong addition to your portfolio?

58 Whitley St perfectly balances a fast-moving local property market with a premium coastal lifestyle location. With a secure tenant newly locked in until May 2027, this asset guarantees immediate financial returns with zero vacancy downtime.

The Ultimate Selling Point: 30 Minutes to Hervey Bay

Why pay premium coastal property prices when you can capture the exact same lifestyle for less?

Just a 30 minute, Drive Away: A direct, easy drive puts you right in the heart of Hervey Bay.
World-Class Lifestyle: Enjoy immediate weekend access to the whale-watching capital of the world, family-friendly beaches, and the gateway to World Heritage-listed K'gari (Fraser Island).
The Smart Pivot: Buyers priced out of the coastal strip are flocking to Howard for its unbeatable affordability and space, while still easily commuting to the Bay for work and leisure.

Howard Market Hot Highlights

The Howard property market is experiencing an immense surge in interest, value, and high rental demand:

Massive Capital Growth: The local market has seen rapid upward price momentum, making it a hotspot for savvy buyers looking to build equity.

Strong Rental Yields: Sit back and collect excellent passive returns with local yields tracking beautifully for landlords.

Long-Term Stability: Properties in this pocket have showcased highly reliable growth trends over the years, proving the strength of the region.

The Home & Land

The House: Tidy, low-maintenance cottage with 3 large bedrooms, polished timber floors, and a bright, modern open-plan kitchen and living area.

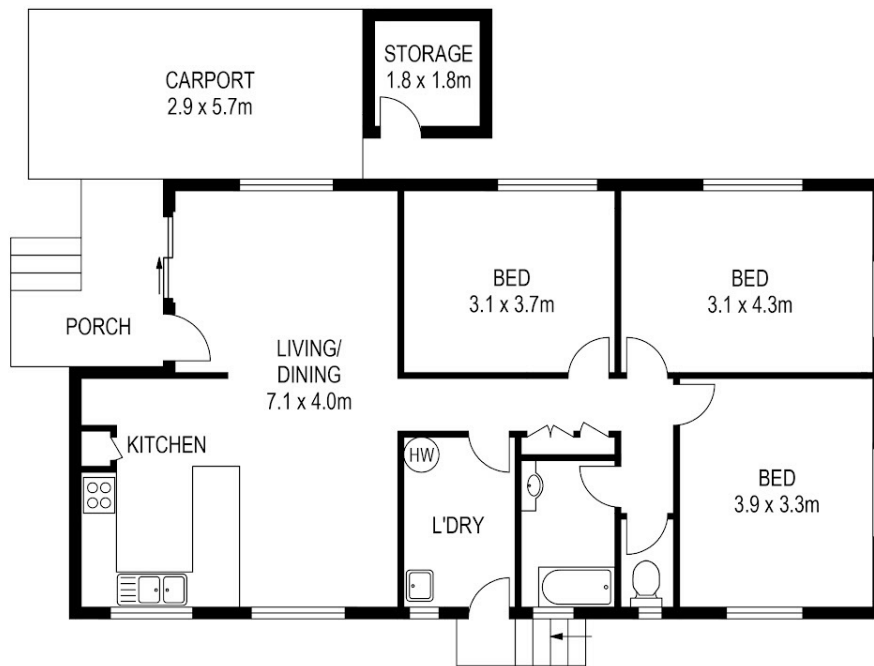
3 BED | 1 BATH | 1 CAR

PRICE:
Contact Agent

OPEN FOR INSPECTION:
May 23 at 9:30am - 10:00am



Sean Coulton
0447389260
sean@impactpg.com.au
Impact Property Group



58 WHITLEY STREET, HOWARD

PLANS SHOWN ONLY INDICATIVE OF LAYOUT. DIMENSIONS ARE APPROXIMATE.
All information contained herein is gathered from sources we believe to be reliable.
However we cannot guarantee its accuracy and interested persons should rely on their own enquiries.



CREATED BY PROPERTY PIXEL
WWW.PROPERTY-PIXEL.COM.AU

Disclaimer: Please note this floor plan is for marketing purposes and is to be used as a guide only. All dimensions are estimates only and may not be exact measurements.