



FOR SALE

MODERN FAMILY LIVING WITH OPEN PLAN DESIGN & ALFRESCO ENTERTAINING!!!

This well-designed 4 bedroom, 2 bathroom home offers the perfect combination of space, comfort, and modern living, ideal for families or investors alike.

The home features a spacious open plan layout, with the kitchen, living, and dining areas flowing seamlessly together to create a central hub for everyday living and entertaining. The modern kitchen includes gas cooking and is well-positioned to overlook the living spaces, making it both functional and family-friendly.

The main bedroom is privately positioned and includes a walk-in robe and ensuite, while the remaining bedrooms are all fitted with built-in wardrobes and serviced by a central bathroom complete with a bathtub.

Step outside to the covered alfresco area, perfect for entertaining or relaxing while enjoying the low-maintenance outdoor space. Comfort is ensured year-round with ducted air conditioning throughout the home.

Additional features include a double car garage, providing secure parking and extra storage.

Key Features:

- 4 bedrooms
- Main bedroom with walk-in robe and ensuite
- Built-in wardrobes to remaining bedrooms
- 2 bathrooms, including main with bathtub
- Open plan kitchen, living, and dining areas
- Kitchen with gas cooking
- Ducted air conditioning
- Covered alfresco entertaining area
- Double car garage

Location Highlights:

- Easy access to the M1 motorway
- Close to local shops and medical facilities

4 BED | 2 BATH | 2 CAR

PRICE:

Price Guide \$1,050,000

OPEN FOR INSPECTION:

May 23 at 11:00am - 11:30am

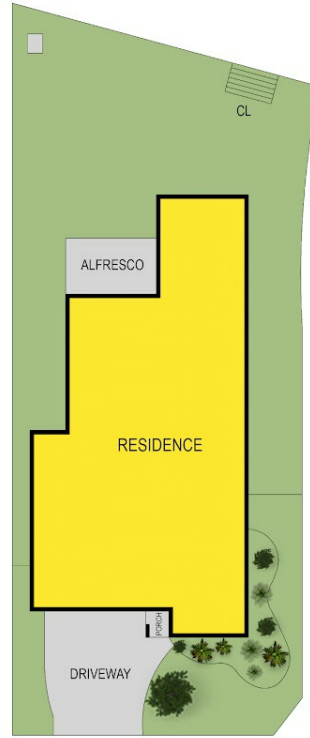
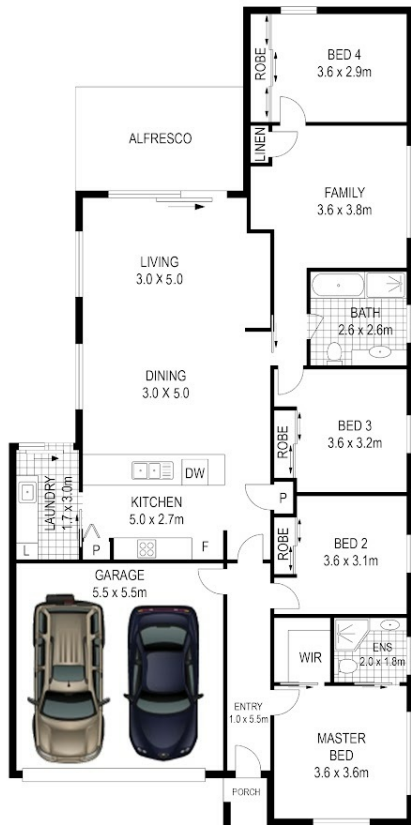


Thomas Twyford

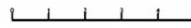
0414002753

tomtwyford@atrealty.com.au

www.atrealty.com.au



7 Minorca Circuit
Hamlyn Terrace



Total internal Floor Area : 185 sqm

Scale in metres. Indicative only. Dimensions are approximate. All information contained herein is gathered from sources we believe to be reliable. However we cannot guarantee its accuracy and interested persons should rely on their own enquiries



Disclaimer: Please note this floor plan is for marketing purposes and is to be used as a guide only. All dimensions are estimates only and may not be exact measurements.

