



# FOR SALE

## QUALITY COASTAL LIVING IN THIS LOW-SET GEM

Step into coastal luxury at this impressive four-bedroom home on Bondi Street, where Newport's waterways lifestyle meets modern comfort and convenience. This stunning residence perfectly captures the essence of peninsula living with thoughtful design and premium features that cater to families seeking relaxed elegance.

- Four spacious bedrooms with built-in wardrobes
- Two bathrooms including ensuite to master
- Ducted air-conditioning throughout
- Modern kitchen with walk-in pantry that overlooks multiple living areas
- Separate family room at the front of the house
- Covered entertaining area
- Fully fenced 392m<sup>2</sup> block
- Remote double garage with internal access
- Solar panels for eco-friendly living

Newport's position on the Redcliffe Peninsula provides easy access to beaches, shopping, schools and transport links to Brisbane. The suburb's unique waterways create a resort-like atmosphere while maintaining proximity to all essential services.

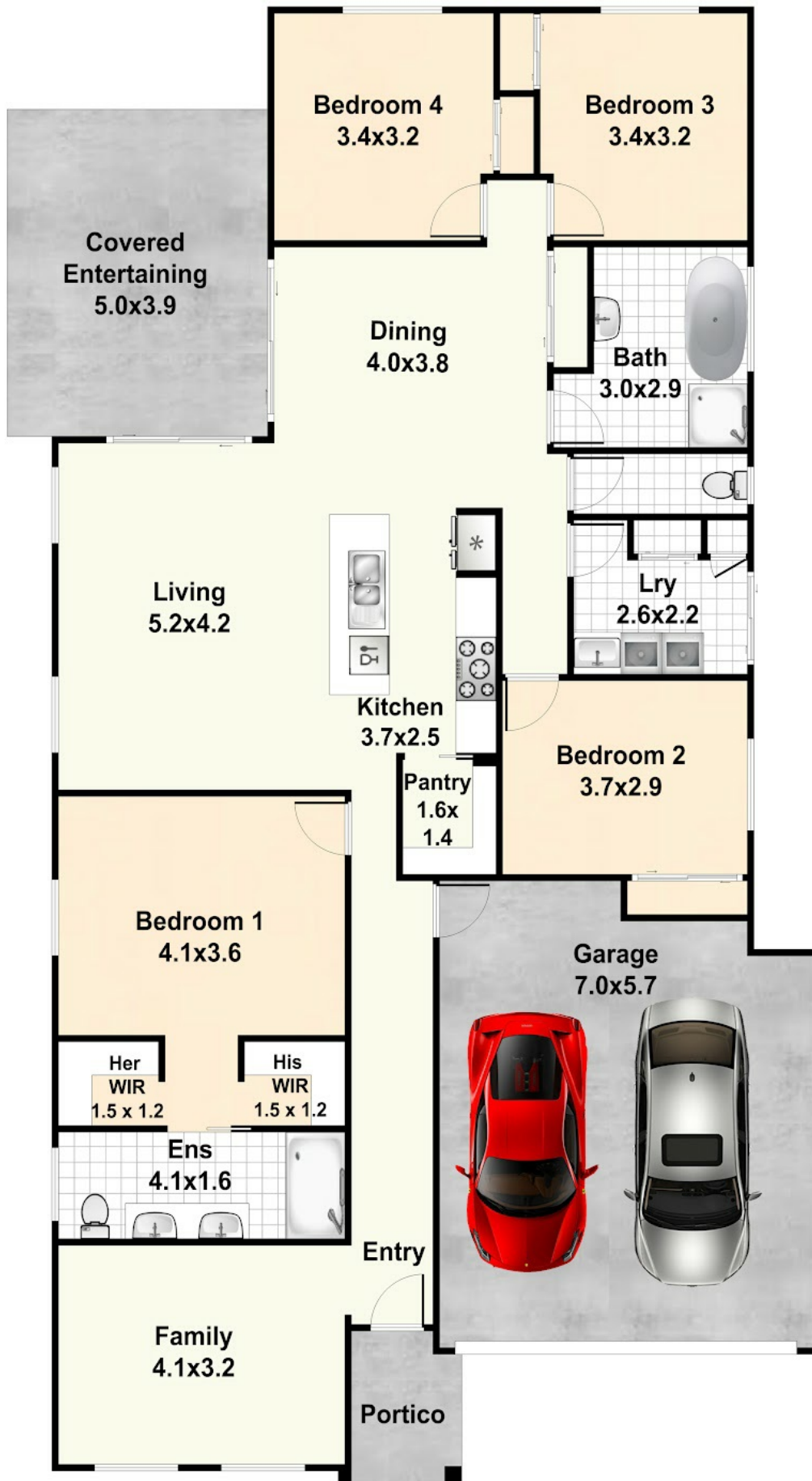
4 BED | 2 BATH | 2 CAR

PRICE:  
For Sale

OPEN FOR INSPECTION:  
N/A



**Luke Rogers**  
0407410070  
lukerogers@atrealty.com.au  
[www.atrealty.com.au](http://www.atrealty.com.au)



Disclaimer: Please note this floor plan is for marketing purposes and is to be used as a guide only. All dimensions are estimates only and may not be exact measurements.

EXT -23 sqm

**Luke Rogers**  
0407410070  
lukerogers@atrealty.com.au  
[www.atrealty.com.au](http://www.atrealty.com.au)

**Newport**

The floor plan is not to scale; measurements are indicative and in metres. Exterior elements are not in position. Plans should not be relied on. Interested parties should make and rely on their own enquiries.

**@realty**