

FOR SALE

LOW-MAINTENANCE LIVING WITH EXTRA SPACE & SUNROOM COMFORT!!!

Offering a relaxed and low-maintenance lifestyle, this well-presented 2 bedroom home is perfect for downsizers, retirees, or those seeking easy living in a convenient location.

Inside, the home features a functional open plan layout combining the kitchen, dining, and living areas—creating a comfortable and practical space for everyday living. Both bedrooms include built-in wardrobes, while ceiling fans and split system air conditioning ensure year-round comfort.

A standout feature is the sunroom, providing additional living space ideal for relaxing, entertaining, or enjoying the natural light throughout the day.

Outside, the home offers a welcoming front porch, a private backyard, and two garden sheds for extra storage—adding to the overall functionality and appeal.

Key Features:

- 2 bedrooms, both with built-in wardrobes
- Open plan kitchen, dining, and living area
- Sunroom for additional living space
- Ceiling fans throughout
- Split system air conditioning
- Front porch
- Private backyard
- Two garden sheds for extra storage

Location Highlights:

- Located just up the road from the local shopping centre
- Easy access to the M1 motorway

Park Amenities:

- Tennis court
- Swimming pool
- BBQ area

2 BED | 1 BATH | 1 CAR

PRICE:

\$400,000 - \$440,000

OPEN FOR INSPECTION:

N/A

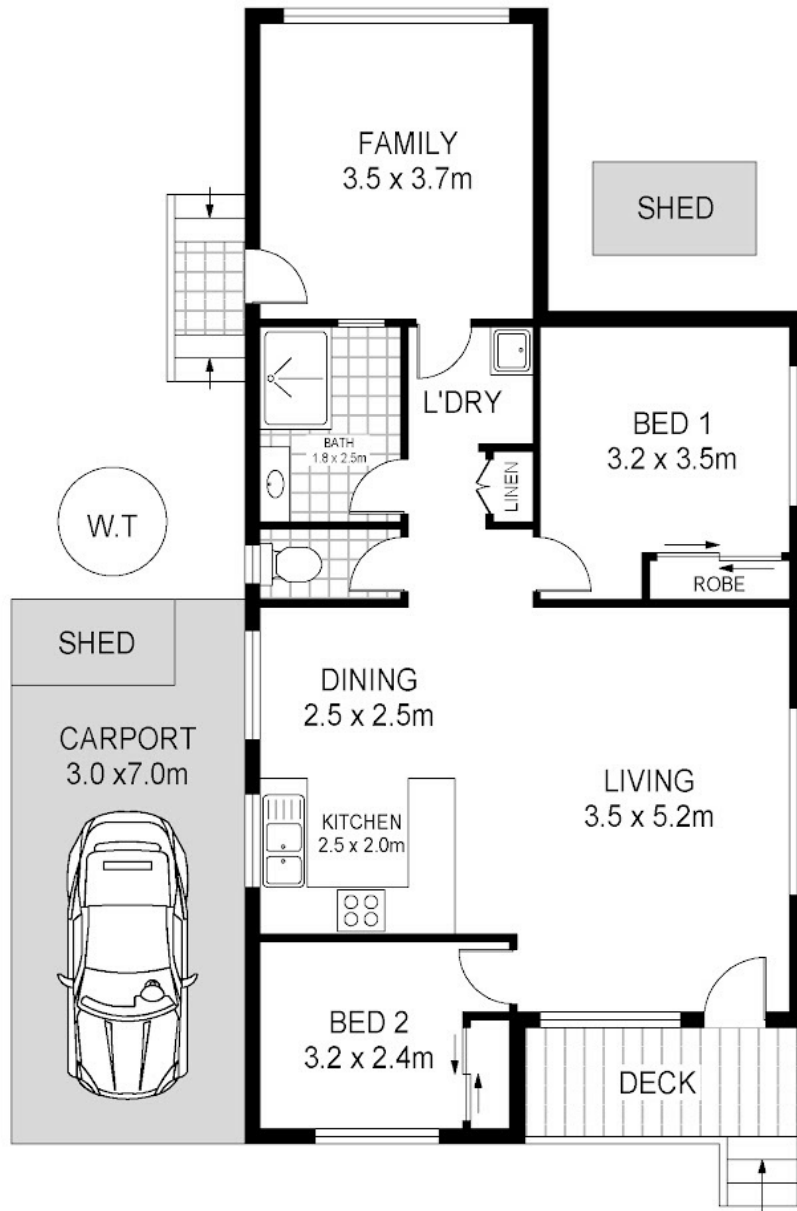


Thomas Twyford

0414002753

tomtwyford@atrealty.com.au

www.atrealty.com.au



Disclaimer: Please note this floor plan is for marketing purposes and is to be used as a guide only. All dimensions are estimates only and may not be exact measurements.

106/150 Tall Timbers Road
Doyalson North

Thomas Twyford
0414002753
tomtwyford@atrealty.com.au
www.atrealty.com.au



Total Internal Floor Area: 78 sqm

Scale in metres. Indicative only. Dimensions are approximate. All information contained herein is gathered from source. We believe to be reliable. However we cannot guarantee its accuracy and interested persons should rely on their own enquiries.

