



FOR SALE

STUNNING STREET APPEAL AND SEA VIEWS

This beautifully designed 29 square home was built in 2010 and is set over two levels, the floor plan is ideal for almost all stages of life and the property is positioned approx. 400 metres from Freers Beach

Upper level

- A sleek kitchen with 40 mm stone worktops, large island bench/breakfast bar, dishwasher and spacious pantry.
- From the open plan living area you will enjoy captivating sea views and direct access to a spacious covered balcony.
- The generous master bedroom offers a walk in robe and ensuite with under floor heating.
- There is a convenient study nook and powder room.

Lower level

- The home greets you with its formal entry and then takes you to 3 downstairs bedrooms, two with built ins.
- The beautifully designed family bathroom has a feature stand alone bath, wall hung vanity and separate W/C
- There is a spacious internal laundry and internal access from the double remote garage, both provide convenient storage.

Externally the home offers a family friendly, level back yard with established gardens, garden shed and a covered entertainment area all set on a level 669 sqm block.

Other features include, internal and external staircase, the internal staircase is fitted with a stair lift, Heat pumps both on the upper and lower level

Disclaimer:

Whilst Richard Jackson @ Realty has taken every care to verify the accuracy of the details in this property listing, we cannot guarantee its correctness. Prospective buyers need to take such action as is necessary, to satisfy themselves of any pertinent matters.

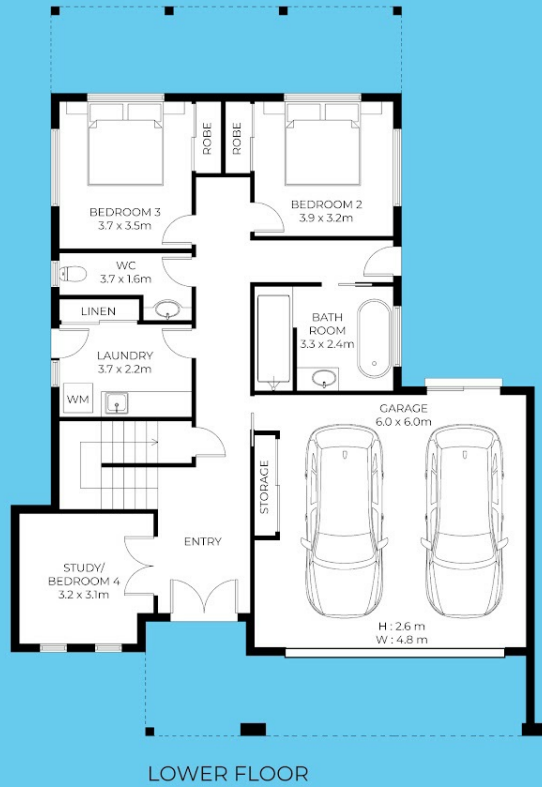
4 BED | 2 BATH | 2 CAR

PRICE:
\$1,395,000

OPEN FOR INSPECTION:
N/A



Richard Jackson
0403711289
richardjackson@atrealty.com.au
www.atrealty.com.au



LOWER FLOOR



UPPER FLOOR

29 Quinlan Crescent, Shearwater

Internal 203m² | External 69m² | Total 272m²

Richard Jackson
0403 711 289



2 Car 4 Bed 4 Bath

This floor-plan is a guide for marketing use only.
Dimensions and square metre measurements are approximate.

Disclaimer: Please note this floor plan is for marketing purposes and is to be used as a guide only. All dimensions are estimates only and may not be exact measurements.

Richard Jackson
0403711289
richardjackson@atrealty.com.au
www.atrealty.com.au

