

8 LALROY STREET, BEACHMERE, QLD, 4510



# FOR SALE

## COASTAL RETREAT WITH SPACE FOR THE WHOLE FAMILY

Escape to a serene bayside retreat where charm, space, and convenience come together effortlessly. Positioned on a generous 703m<sup>2</sup> allotment, this character-filled beach cottage offers the perfect opportunity to embrace relaxed coastal living, all within walking distance to the beautiful Beachmere waterfront.

Inside, the home features 3 spacious bedrooms, 1 well-appointed bathroom, 2 separate living areas, and a bright sunroom that captures natural light and cooling bay breezes. The versatile layout provides comfortable living for families, downsizers, or investors seeking a property with both warmth and functionality.

At the heart of the home, the kitchen flows seamlessly into the family and dining areas, creating a practical space designed for everyday living and entertaining alike. A spacious internal laundry offers additional storage for added convenience.

Stepping outside, the fully fenced backyard offers plenty of room to enjoy, complete with a large 6m x 9m two-bay shed — ideal for hobbies, storage, vehicles, or workshop space. Combining lifestyle, location, and versatility, this is a property that truly captures the essence of bayside living.

### Property Features:

- Land Size: 703m<sup>2</sup>
- Currently owner occupied

### House Features:

- Master bedroom with walk-in wardrobe and air-conditioning
- Two additional bedrooms with built-in wardrobes
- Ceiling fans throughout all bedrooms
- Open-plan living and dining area
- Main living room with air-conditioning
- Spacious bathroom with shower and bath combination
- Separate toilet
- Second lounge/living room

3 BED | 1 BATH | 2 CAR

### PRICE:

OFFERS OVER \$849,000

### OPEN FOR INSPECTION:

May 23 at 9:00am - 9:30am

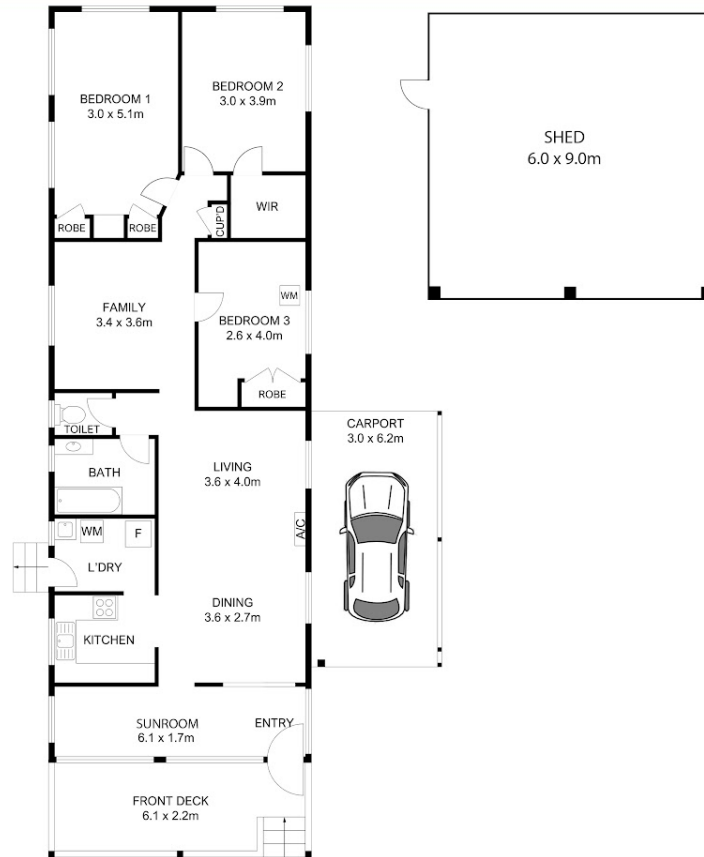


**Mitchell Younger**

**0488458887**

[mitchell.younger@atrealty.com.au](mailto:mitchell.younger@atrealty.com.au)

[www.atrealty.com.au](http://www.atrealty.com.au)



This floor plan including furniture, fixture measurements and dimensions are approximate and for illustrative purposes only. BoxBrownie.com gives no guarantee, warranty or representation as to the accuracy and layout. All enquiries must be directed to the agent, vendor or party representing this floor plan.

Disclaimer: Please note this floor plan is for marketing purposes and is to be used as a guide only. All dimensions are estimates only and may not be exact measurements.