



FOR SALE

CRAFTED WITH CARE, ROOM FOR EVERY VEHICLE

Designed for buyers who appreciate quality workmanship and easy living, this home showcases the kind of craftsmanship that is becoming increasingly difficult to find.

Before you even step inside, one feature immediately stands out - the amount of off-street parking. Whether you have extra vehicles, a boat, trailer or campervan, there is space here to accommodate them with ease.

Inside, the attention to detail is evident from the outset. A Venetian plaster feature wall and tiled entrance create a distinctive welcome. The living area is enhanced by beautifully crafted panelling that draws the eye, while a heated ceiling provides an understated layer of comfort. An inbuilt Escea gas fire creates a striking focal point, and doors open to a deck that naturally extends the living space outdoors.

The kitchen is positioned for easy connection to the dining and living areas. A generous bench works equally well for food preparation, casual meals, or a drink with friends.

The heated ceiling continues through the hallway and into the primary bedroom, which enjoys outdoor access, a walk-in wardrobe and ensuite. Two further bedrooms offer excellent storage and are serviced by a family bathroom complete with bath, shower, vanity and toilet.

The laundry is conveniently located within the carpeted double garage, keeping everyday tasks neatly contained.

The fenced rear section is every bit as immaculate as the interior, with room for children and pets to play safely among established, mature plantings.

Beyond the home itself, Mosgiel offers a strong sense of community, with schools, supermarkets and amenities all close by.

For those who appreciate quality materials, thoughtful design and a low-maintenance lifestyle without compromise, viewing is recommended to fully appreciate the detail that sets this property apart.

3 BED | 2 BATH | 2 CAR

PRICE:

Price by Negotiation

OPEN FOR INSPECTION:

Jun 7 at 12:45pm - 1:15pm

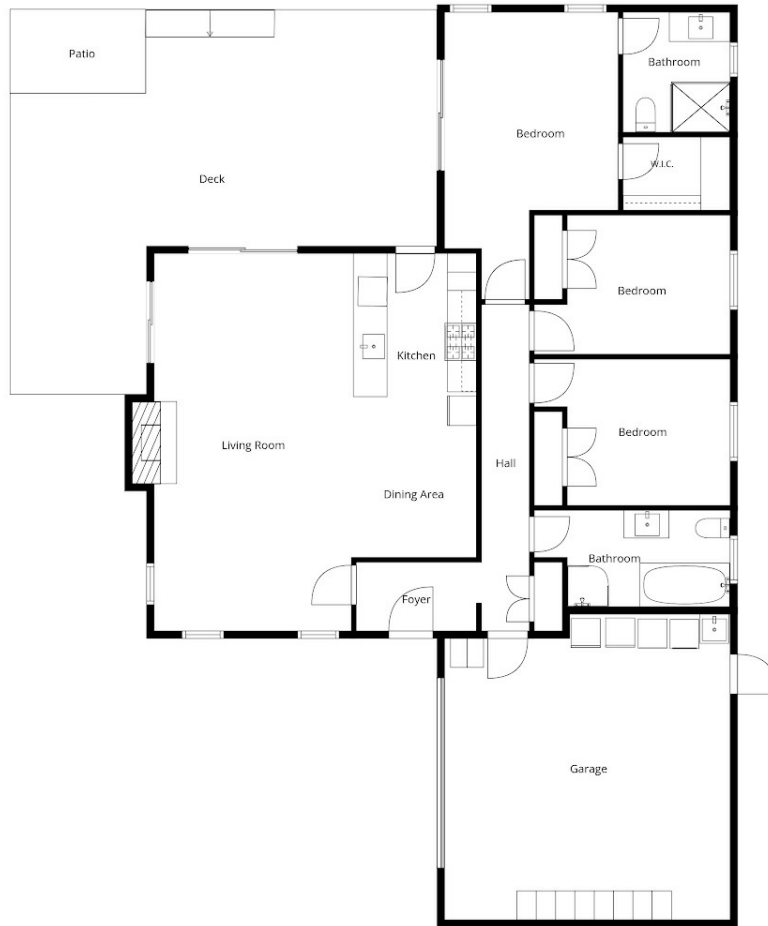


Team Robinson - Shane, Julie and Kendra

021953676

teamrobinson@thecollectiverealty.co.nz

www.thecollectiverealty.co.nz



Sizes And Dimensions Are Approximate, Actual May Vary

Disclaimer: Please note this floor plan is for marketing purposes and is to be used as a guide only. All dimensions are estimates only and may not be exact measurements.