



FOR SALE

MOUNTAIN VIEWS, POOL & SPACE - A GORDONVALE GEM

Escape to your own private resort at 4 Spender Close, where luxury meets tranquillity in one of Gordonvale's most sought after pockets. This stunning four bedroom, two-bathroom family home sits proudly on an 843m² block, offering the perfect blend of space, comfort and entertaining excellence that growing families dream of.

Step inside to discover a thoughtfully designed floor plan with separate living and family areas, combined kitchen and formal dining area, office and a huge entertaining area to host bbq's for family and friends.

- Modern Kitchen With So Much Bench space & Storage
- Split System Air Conditioning
- Servery To Patio
- No Direct Rear Neighbours
- Sparkling Inground Swimming Pool
- Secure Parking For Two Vehicles Plus Additional Shed Space For Your Storage Needs

This property represents more than just a home, it's a lifestyle choice for families seeking space, quality, and community in one of Far North Queensland's most desirable locations. With its combination of indoor comfort, outdoor luxury, and prime positioning in Gordonvale, 4 Spender Close offers an opportunity to create lasting memories in a truly special setting.

For More Information Or A Private Inspection.
Contact Brian Bolton On 0402440098
@realty

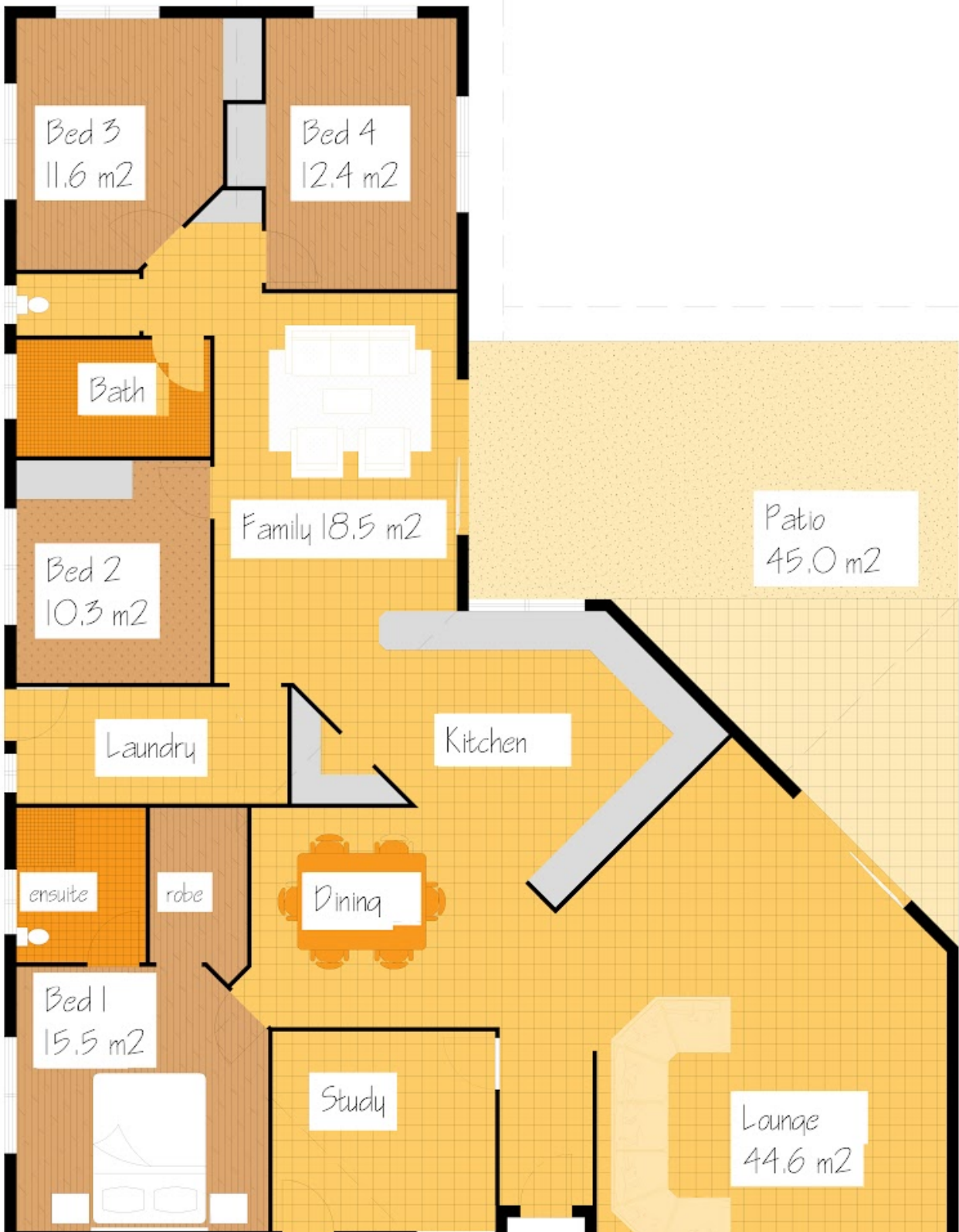
4 BED | 2 BATH | 2 CAR

PRICE:
Low \$900,000's

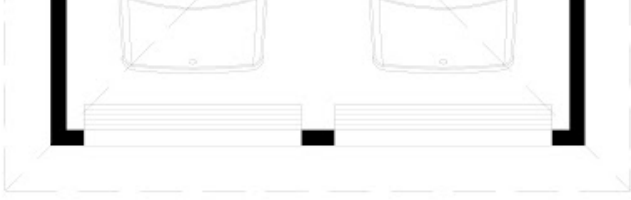
OPEN FOR INSPECTION:
N/A



Brian Bolton
0402440098
brianbolton@atrealty.com.au
www.atrealty.com.au



Disclaimer: Please note this floor plan is for marketing purposes and is to be used as a guide only. All dimensions are estimates only and may not be exact measurements.



TOTAL AREA UNDER
ROOF = 293m^2