



# FOR SALE

## SOPHISTICATED FAMILY LIVING MEETS FUTURE CONVENIENCE

From the moment you step inside 18 Clara Drive, you'll appreciate a home designed for modern family living, combining style, space, and practicality. The flexible floorplan begins with a light-filled formal lounge that also serves perfectly as a home office or beauty studio, before opening into a spacious kitchen, living, and dining zone. The gourmet kitchen features a large walk-in pantry, making everyday living and entertaining effortless, while the expansive undercover alfresco flows seamlessly from the living area, creating the ideal space for year-round entertaining.

Upstairs offers a second living area, providing the perfect retreat for children or teenagers. The luxurious master suite boasts a generous walk-in dressing room and an impressive ensuite with a double vanity and oversized shower, while the remaining three bedrooms are well-appointed with built-in or walk-in robes. Additional features include a downstairs powder room, extra insulation for year-round comfort, security system, added power for future solar panels, epoxy garage flooring, garden shed, a generous backyard with room for a future pool, and the peace of mind of a quality home built in 2024.

Perfectly positioned in one of Clyde North's most exciting growth corridors, this exceptional home also delivers outstanding convenience. A major new shopping precinct is just a five-minute walk away and due for completion within the next 12 months, placing supermarkets, cafés, dining, and everyday essentials practically on your doorstep. Combining premium finishes, multiple living zones, and an unbeatable location, this is a home that offers an exceptional lifestyle for families now and well into the future.

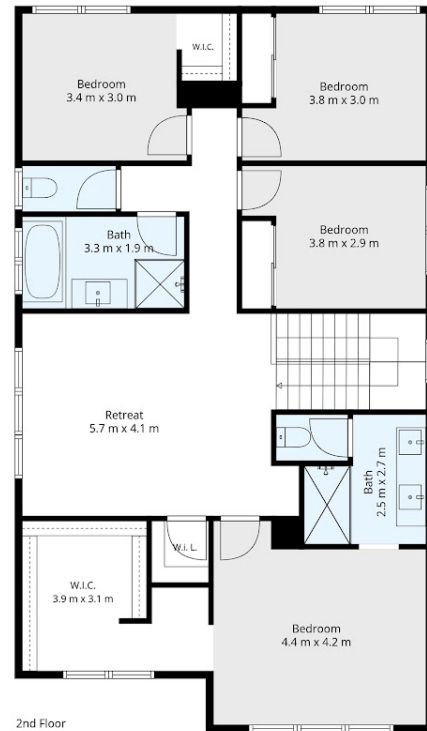
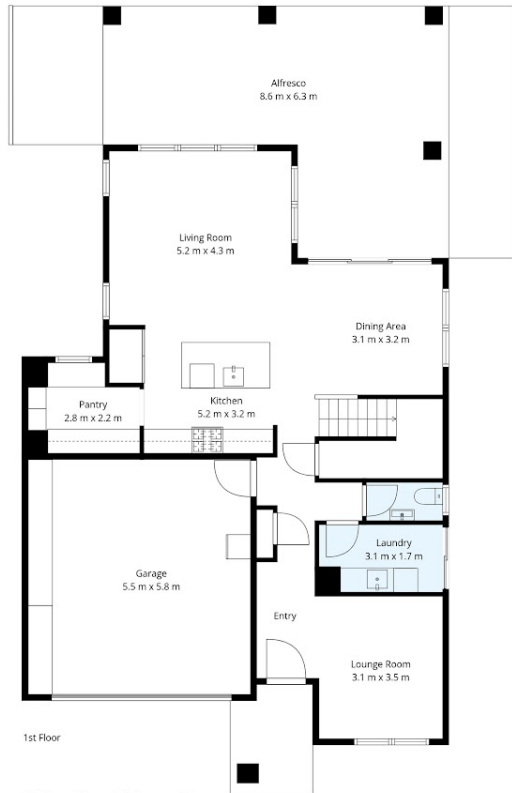
4 BED | 2 BATH | 2 CAR

PRICE:  
\$950,000 - \$1,000,000

OPEN FOR INSPECTION:  
Jul 4 at 11:30am - 12:00pm



**Mel Ahearn**  
0409183763  
mahearn@atrealty.com.au  
[atrealtypropertysalesgippsland.com.au](http://atrealtypropertysalesgippsland.com.au)



## 18 Clara Drive, Clyde North

Whilst every attempt has been made to ensure the accuracy of the floorplan contained here all measurements are approximate and are for illustration purposes only. No responsibility is taken for any error, omission or misstatement



Disclaimer: Please note this floor plan is for marketing purposes and is to be used as a guide only. All dimensions are estimates only and may not be exact measurements.