



SOLD

83 ACRES AND QUEENSLANDER JUST MINUTES INTO KINGARROY

Just minutes from Kingarroy, 21 Neale Road offers an amazing lifestyle property with a large Queenslander on 83 acres (approx.), and plenty of usable country, mostly Category X (white zone).

The home is neat, comfortable, easy to live in, and presents well. It includes three bedrooms plus multiple sleepouts, giving flexibility for extra accommodation, office space or future upgrades.

The lounge includes a large air conditioner and ceiling fan and flows to the dining area which features a fireplace that services both spaces.

The kitchen is a standout, with hardwood benchtops, breakfast bar, dishwasher, electric cooking, double sink and space for large fridges.

The bathroom includes both a shower and bath, with a separate toilet nearby. A good-sized laundry and plenty of storage throughout the home add to the functionality.

The main bedroom is a generous size, with air conditioning, ceiling fan and room for a king bed. It connects through to an additional room, currently used as an office, that could be converted into a walk-in robe and ensuite if desired.

Several sleepouts add further versatility depending on your needs.

Fly screens are fitted to all windows, and the property has NBN availability, phone coverage and a school bus service.

Outside, there is a covered entertaining area, large shed and workshop (with 5kw solar system), established gardens, around 50 fruit trees and a chook pen.

Water is well covered, with four large rainwater tanks supplying the home, plus additional water pumped from a dam to service parts of the garden. A solar hot water system is also in place.

The land is well set up for livestock, currently running around 30 steers along with a few horses.

3 BED | 1 BATH | 2 CAR

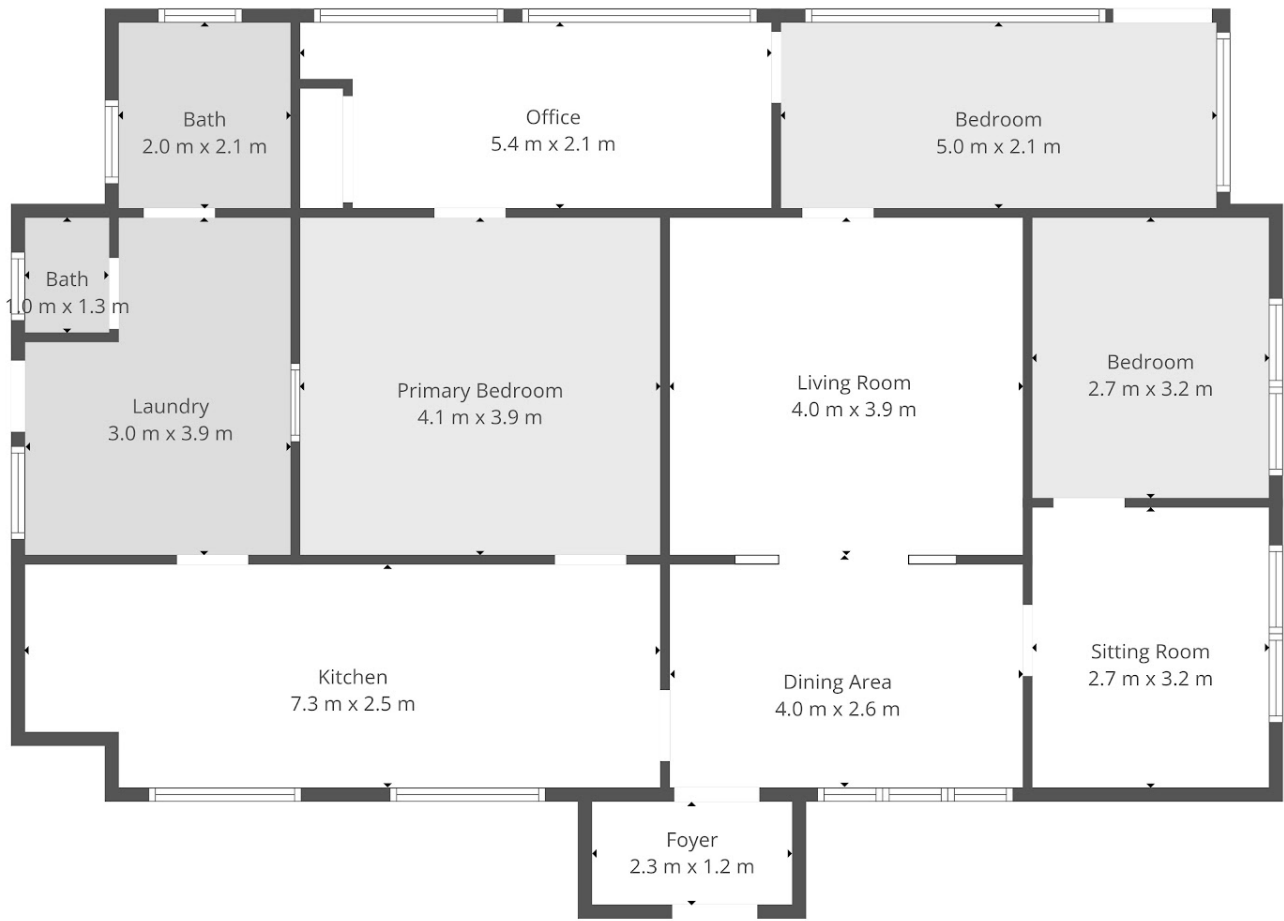
PRICE:
\$830,000

OPEN FOR INSPECTION:
N/A



Julian Gregson
0421577537

julian.gregson@atrealty.com.au
www.juliangregson.com.au



Floor plan is provided as indicative layout only. Measurements are not available, floor plan is not to scale. No guarantees provided on accuracy. Exterior elements are not in position

Disclaimer: Please note this floor plan is for marketing purposes and is to be used as a guide only. All dimensions are estimates only and may not be exact measurements.

