



FOR SALE

COASTAL LIVING JUST MOMENTS FROM THE WATER

Nestled within the charming seaside township of Corinella, 10 Wright Street offers the perfect blend of relaxed coastal living, investment potential, and everyday convenience. Whether you're a first-home buyer, downsizer, holidaymaker, or savvy investor, this well-presented property is packed with opportunity.

Featuring three comfortable bedrooms and a practical layout designed for easy living, the home provides a welcoming environment for families, couples, or those looking for a peaceful coastal escape. Light-filled living spaces create a warm and inviting atmosphere, while the low-maintenance setting allows you to spend more time enjoying everything this beautiful bay side location has to offer.

One of the home's standout features is its superb proximity to the waterfront. Enjoy leisurely walks to the beach, foreshore, boat ramp, and local recreational areas, making it easy to embrace the laid-back lifestyle that attracts so many people to Corinella.

Property Features:

- Three comfortable bedrooms
- Well-maintained and easy-to-live-in floorplan
- Light-filled living and dining areas
- Low-maintenance allotment
- Short stroll to the beach and foreshore
- Ideal first home, holiday retreat, or investment property
- Excellent Airbnb or short-stay accommodation potential
- Peaceful coastal location with strong lifestyle appeal

Corinella is renowned for its tranquil atmosphere, excellent boating and fishing facilities, scenic waterfront reserves, and welcoming community. With easy access to the wider Bass Coast region, including beaches, wineries, cafes, and major amenities, you'll enjoy the best of coastal living while remaining within reach of Melbourne.

Whether you're looking to move in, invest, or establish a holiday rental, 10 Wright Street presents an outstanding opportunity in one of Bass Coast's hidden gems.

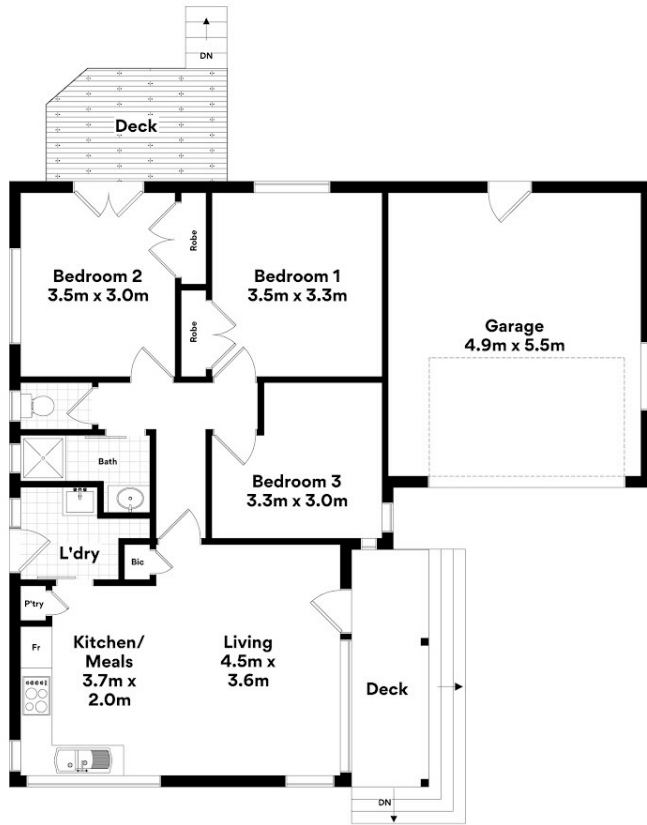
3 BED | 1 BATH | 1 CAR

PRICE:
\$590,000 - \$610,000

OPEN FOR INSPECTION:
N/A



Tamara Leskie
0448809458
tamara.leskie@atrealty.com.au
www.atrealtypropertyexperts.com.au



10 Wright St, Corinella

Whilst every attempt has been made to ensure the accuracy of the floorplans contained here, measurements of doors, windows and rooms are approximate and no responsibility is taken for any error, omission or misstatement. These plans are for representation purposes only.

Disclaimer: Please note this floor plan is for marketing purposes and is to be used as a guide only. All dimensions are estimates only and may not be exact measurements.