



FOR SALE

FAIRWAY VISTAS & COASTAL CALM

Tucked away down a private drive, this hidden gem offers a peaceful retreat from the everyday hustle, framing spectacular, sweeping views over the Chisholm Link Golf Course and out to the sparkling sea. Positioned for ultimate privacy and bathed in natural light, the home welcomes you through a sunny conservatory entrance—the perfect spot for morning coffees or a quiet place to unwind. Step inside to find an idyllic setup designed for effortless family living, where the heart of the house features an open-plan kitchen and dining area that beautifully captures the coastal scenery. This space flows seamlessly onto a sun-drenched deck, creating a flawless indoor-outdoor transition for summer BBQs while kids and pets play safely in the established, private garden. Complementing this central hub, the main lounge boasts its own captivating outlooks, offering an extra layer of versatility and room for the family to spread out. Year-round comfort is guaranteed across the three comfortable bedrooms thanks to two heat pumps and the majority of the home having double glazing. While practical family life is made easy with an expansive under-house storage area for all the toys, alongside ample off-street parking. Superbly located close to quality schools and convenient public transport links, this beautifully balanced property offers a serene lifestyle that will effortlessly suit first-home buyers, professionals, and growing families alike. For sale by Deadline closing 9th June at noon. Prior offers considered.

3 BED | 1 BATH | 1 CAR

PRICE:

Deadline sale. Deadline date
09/06/2026

OPEN FOR INSPECTION:

May 29 at 12:15pm - 12:45pm
Jun 1 at 1:00pm - 1:30pm

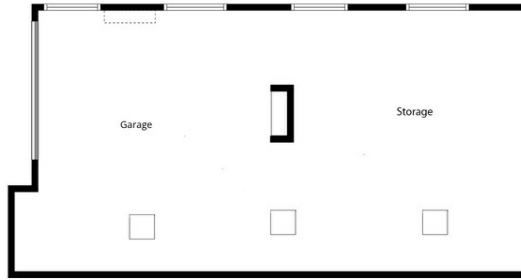
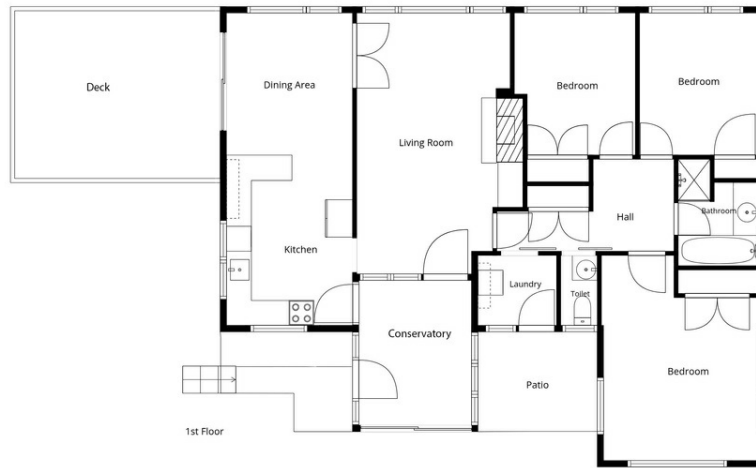


Tania Porteous

021476011

tania@thecollectiverealty.co.nz

www.thecollectiverealty.co.nz



Sizes And Dimensions Are Approximate, Actual May Vary

Disclaimer: Please note this floor plan is for marketing purposes and is to be used as a guide only. All dimensions are estimates only and may not be exact measurements.