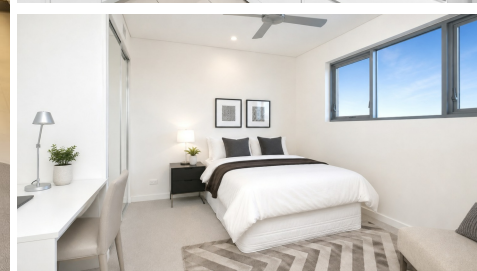


ADDRESS UPON REQUEST



FOR SALE

MODERN STUDIO APARTMENT IN VIBRANT BOWEN HILLS - CONVENIENT LOCATION!

Step into urban sophistication with this stylish studio apartment perfectly positioned in the heart of Bowen Hills, one of Brisbane's most dynamic inner-city suburbs. This contemporary one-bedroom, one-bathroom residence at 35 Campbell Street offers the ideal entry point into inner-city living, just 3.2 kilometres from Brisbane's CBD.

This thoughtfully designed studio maximises space and functionality, creating a comfortable living environment that's perfect for young professionals, investors, or those seeking a convenient city base. The open-plan layout flows seamlessly, while the inclusion of a dedicated bathroom ensures all your daily needs are met with style and convenience.

- Prime inner-city location with easy access to Brisbane CBD
- Contemporary studio design with one bedroom and one bathroom
- Perfect for first-home buyers, investors, or city professionals
- Low-maintenance living in a modern residential complex

Bowen Hills is renowned as one of Brisbane's most culturally rich and well-connected suburbs, offering residents an enviable lifestyle just minutes from the city centre. The area perfectly balances urban convenience with community charm, making it a highly sought-after location for both residents and investors.

The suburb's exceptional transport links are second to none, with Bowen Hills Station serving as one of Queensland's busiest railway stations. All Queensland Rail City network services stop here, including express trains, providing seamless connections throughout Brisbane and beyond. The TransApex infrastructure network, including the Clem Jones Tunnel, Airport Link Tunnel, and Inner City Bypass, all converge in Bowen Hills, making car travel equally convenient.

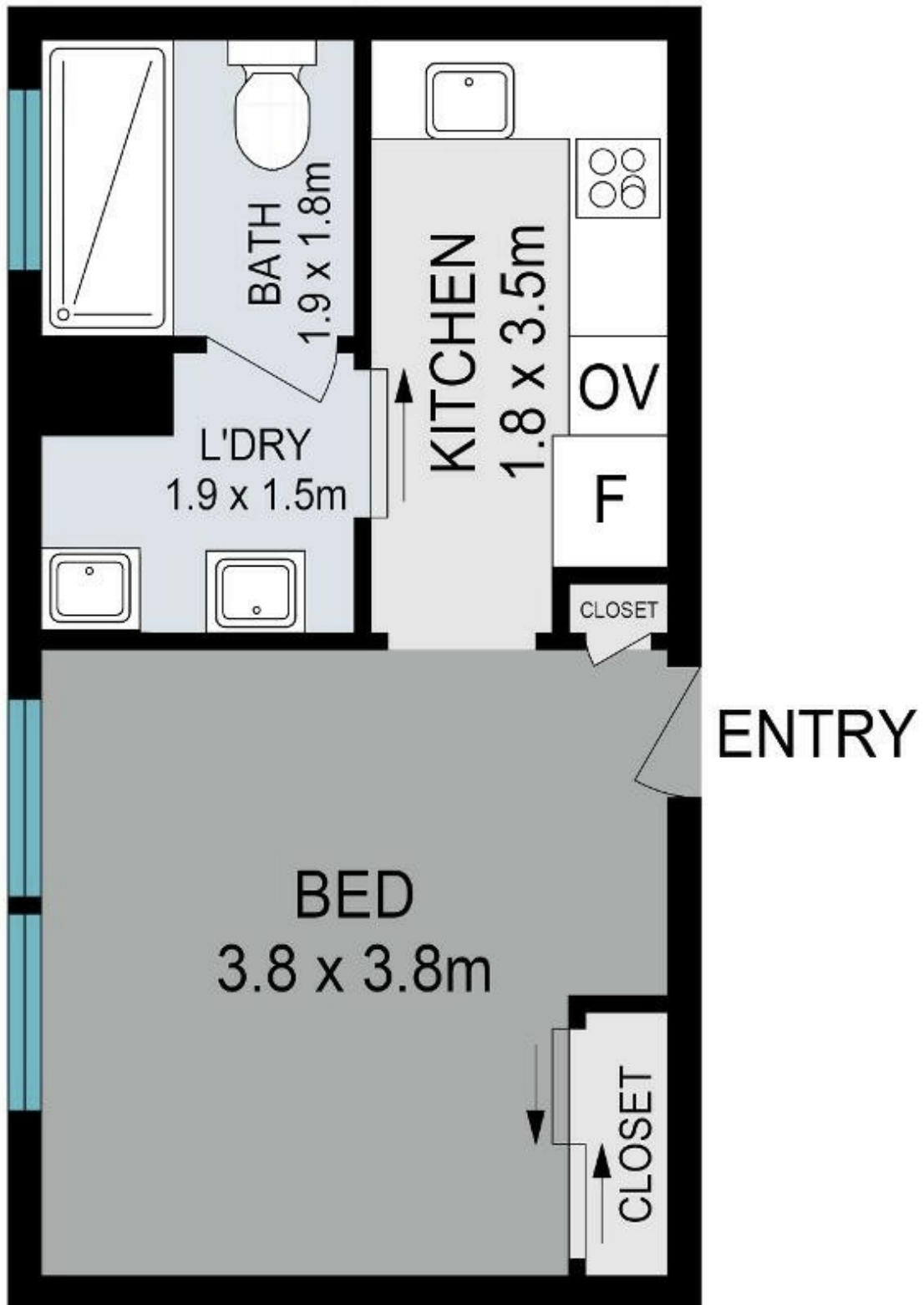
1 BED | 1 BATH | 0 CAR

PRICE:
For Sale

OPEN FOR INSPECTION:
N/A



Frontline Properties
0452426095
fpa@atrealty.com.au
www.atrealty.com.au



Disclaimer: Please note this floor plan is for marketing purposes and is to be used as a guide only. All dimensions are estimates only and may not be exact measurements.

Whilst every attempt has been made to ensure accuracy, Floor Plans are representative and should be used as a guide only