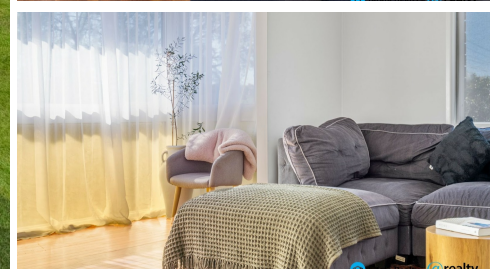
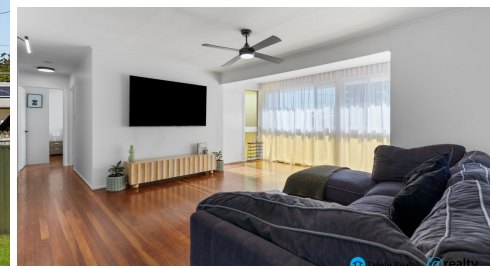


19 JON STREET, CAPALABA, QLD, 4157



Tafolo Realty @realty

# FOR SALE

## REFURBISHED HOME IN QUIET STREET WITH SIDE ACCESS!

Ladies and gentlemen, we are excited to present to you this outstanding lifestyle and investment opportunity!

Positioned on a level 610m<sup>2</sup> block in a convenient and family-friendly pocket of Capalaba, this quality residence offers space, comfort and functionality for the growing family, while presenting excellent value for investors seeking a property in a high-demand location.

The home's many appealing features include:

- \* 3 spacious bedrooms with built-in wardrobes
- \* 2 bathrooms, 1 upstairs plus 1 downstairs
- \* Well-appointed kitchen with ample storage
- \* Two large multi-purpose rooms = flexibility
- \* Split-system air conditioning + ceiling fans
- \* Beautiful timber flooring throughout upstairs
- \* Covered outdoor entertaining area downstairs
- \* Double garage for secure parking of vehicles
- \* Fully fenced 610m<sup>2</sup> block with huge back yard
- \* Plenty of yard space for kids and pets to play
- \* Full and wide side access to the rear yard area

The versatile floorplan offers multiple living zones, allowing families to spread out and enjoy their own space while still coming together in the heart of the home.

Whether you're entertaining guests, working from home or accommodating a growing family, this home adapts effortlessly to your lifestyle.

And the location is simply outstanding. Capalaba State College and Coolnwynpin State School are within walking distance, and Sheldon College and St Luke's Catholic Parish School are also within easy reach.

Maridale Park Shopping Centre is just a short stroll away, while both Capalaba Park and Capalaba Central shopping centres and entertainment options are just minutes from your door.

3 BED | 2 BATH | 2 CAR

PRICE:

Please Contact For Price

OPEN FOR INSPECTION:

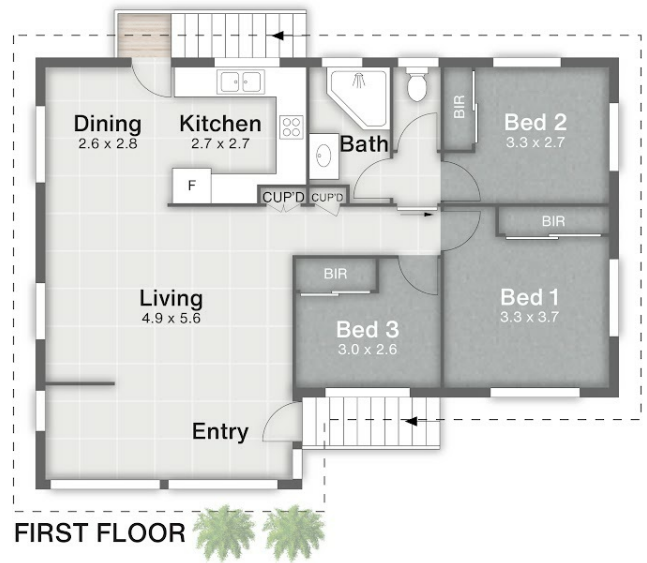
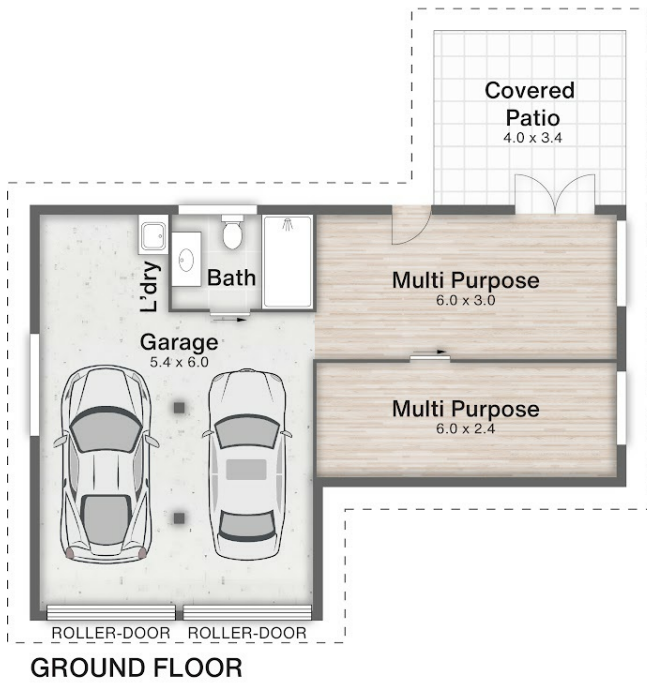
Jun 13 at 10:00am - 10:30am



**Ben Tafolo**  
**0419260719**

tafolo@atrealty.com.au

tafolorealty.com.au



19 Jon Street **CAPALABA**

3 | 2 | 2 | 166m<sup>2</sup> | 610m<sup>2</sup>

All dimensions are approximate; they are subject to errors and inaccuracies and no liability will be accepted. Plans are shown for marketing purposes only.

Disclaimer: Please note this floor plan is for marketing purposes and is to be used as a guide only. All dimensions are estimates only and may not be exact measurements.