



# FOR SALE

## FABULOUS ENTRY LEVEL OR DOWNSIZER!

Don't miss this excellent opportunity to jump on the property ladder!

A fantastic chance to secure an affordable slice of Buderim with plenty of charm and future potential.

Tucked away in the heart of sought-after Buderim, this neat and tidy original courtyard unit offers effortless living with endless potential.

Neat as a pin and perfect for first home buyers, downsizers or savvy investors, the home features two comfortable bedrooms with built in robes, a functional bathroom, and a lovely open plan layout designed for easy everyday living.

Step outside to your own private courtyard the ideal spot for morning coffee, a small garden, or relaxed entertaining, backing onto a bush reserve.

Positioned in a quiet and convenient location close to local shops, cafes, transport and beautiful Sunshine Coast beaches, this charming residence delivers low-maintenance living in one of the Coast's most desirable suburbs.

Secure your peice of Buderim today!

Fantastic Features!

- 2x bedroom
- 1x bathroom
- Internal laundry
- Single lock-up garage with internal access
- Ceiling fans throughout
- Fully fenced sunny courtyard

Come along to the next allocated Open Home to inspect or alternatively  
Contact Leanne Plummer on 0484 234 035

Disclaimer: While every effort has been made to ensure the accuracy of these particulars, no warranty is given by the vendor or the agent as to their accuracy. Interested parties should not rely on these particulars as representations of fact but must satisfy themselves by inspection or

2 BED | 1 BATH | 1 CAR

PRICE:

Contact Agent

OPEN FOR INSPECTION:

Jun 17 at 10:00am - 10:30am

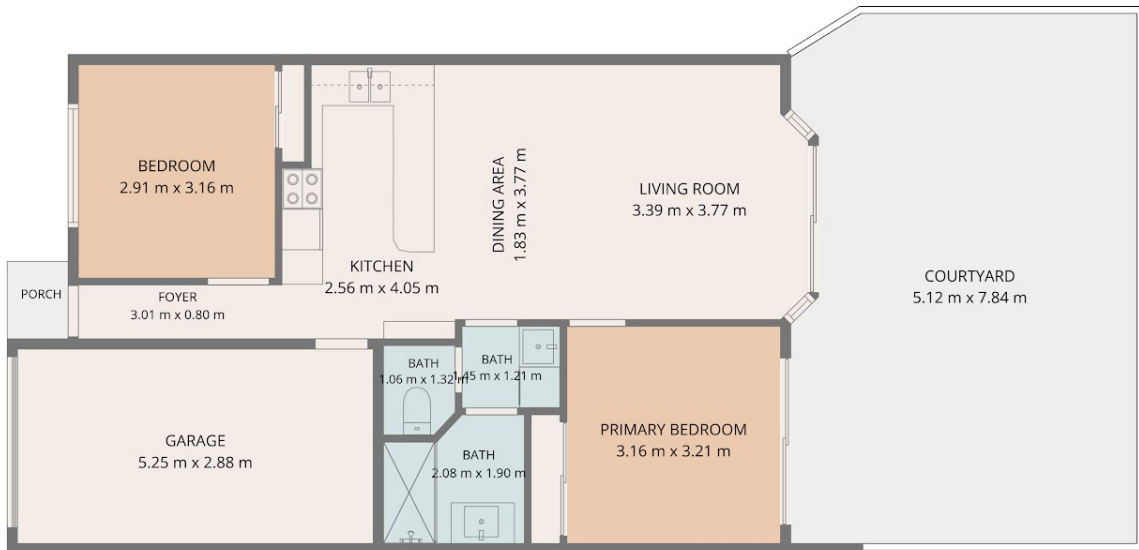


**Leanne Plummer**

**0484234035**

leanne.plummer@atrealty.com.au

[www.atrealty.com.au](http://www.atrealty.com.au)



1st floor

**TOTAL: 61 m<sup>2</sup>**  
 1st floor: 61 m<sup>2</sup>  
 EXCLUDED AREAS: GARAGE: 15 m<sup>2</sup>, COURTYARD: 39 m<sup>2</sup>, PORCH: 1 m<sup>2</sup>,  
 WALLS: 7 m<sup>2</sup>



## 7/14 Glen Kyle Drive, BUDERIM

2 1 1



Sizes and dimensions are approximate and should be used for reference only.  
 Actual measurements may vary slightly and should be verified on-site before making any decisions.

Disclaimer: Please note this floor plan is for marketing purposes and is to be used as a guide only. All dimensions are estimates only and may not be exact measurements.

**Leanne Plummer**  
 0484234035  
 leanne.plummer@atrealty.com.au  
[www.atrealty.com.au](http://www.atrealty.com.au)

