

102 NORTHERN ROAD
HEIDELBERG WEST



FOR SALE

TAKE ADVANTAGE OF THIS MODERN WAREHOUSE AND MULTI OFFICE FACILITY

0  | 0  | 0 

Take advantage of this rare Northern Road opportunity

Positioned in a tightly held part of Heidelberg West this truly modern and versatile property offers an outstanding opportunity for owner-occupiers or investors.

Set on 916m² land with 720m² of Warehouse/Factory and Office space

Located in the heart of Melbourne's established industrial precinct, with convenient access to Bell Street, the Metropolitan Ring Road, Eastern Freeway and the CBD, this is a rare opportunity to secure a well-located freehold with genuine upside.

The dynamic design will suit a broad range of occupants wanting high exposure and practical layout and a touch of class.

Ideal for businesses looking to establish their company in a prime property or investors seeking a high value asset.

Key Features:

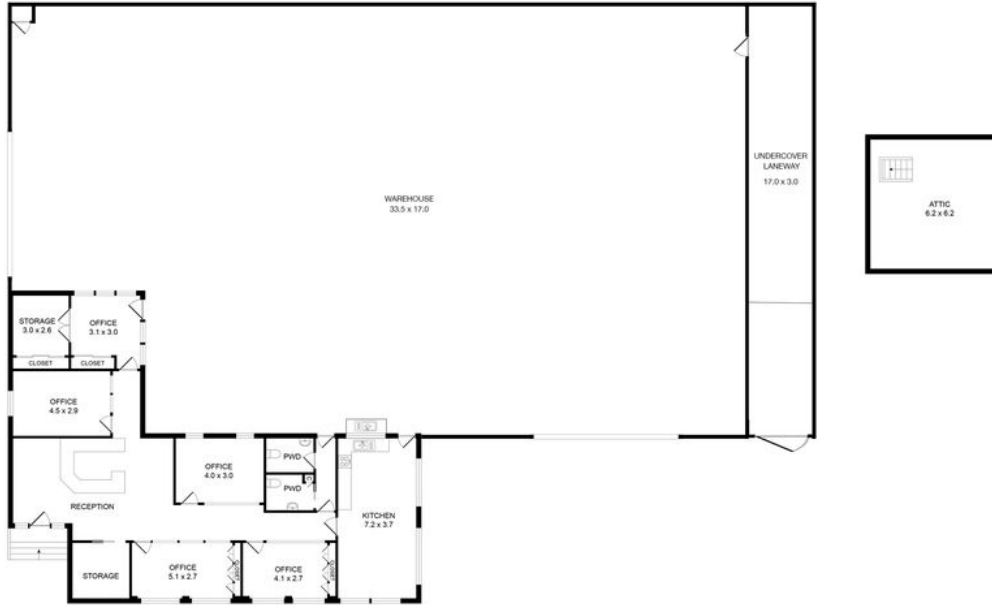
- 4 Modern offices
- Large reception and waiting area

PRICE: Contact Agent

OPEN FOR INSPECTION: N/A .

Wayne Hutchinson | 0424370940 | wayne@waynehutchinson.com.au | waynehutchinson.com.au

102 NORTHERN ROAD,
HEIDELBERG WEST



OFFICE SPACE - 160 SQM
WAREHOUSE SPACE - 556 SQM
TOTAL BUILDING FLOOR SPACE - 748 SQM

 Disclaimer: Floor plan is represented as guide only.

Disclaimer: Whilst every effort has been made to ensure the accuracy of these particulars, no warranty is given by the vendor or the agent as to their accuracy. Interested parties should not rely on these particulars as representations of fact but must instead satisfy themselves by inspection or otherwise.
(Rev AU#1)

Wayne Hutchinson | 0424370940 | wayne@waynehutchinson.com.au | waynehutchinson.com.au