



FOR SALE

FANTASTIC POSITION, SIMPLY THE BEST RETIREMENT LIVING – 175 PALM LAKE RESORT

Discover this stunning 3-bedroom, 2-bathroom residence — a truly superior Hampton style home distinguished by high-end fittings, quality inclusions, and a thoughtfully designed layout that maximizes privacy and embraces the natural light.

As part of the perfectly positioned Palm Lake Resort just back from the Beachmere shore precinct, this home offers a rare level of, space and serenity seldom found in resort living. A true hidden gem!

From the moment you enter, the spacious elegant entry leads you to a private bedroom wing on one side, while offering enticing glimpses of the spacious open plan living and indoor/outdoor alfresco. The modern Chef's kitchen, complete with an island work bench and breakfast bar has been designed for both function and style.

Enjoy the best of retirement living with all the benefits of a resort lifestyle — a peaceful, nature-inspired setting that supports a healthy, fulfilling way of life within a vibrant, active community.

With all the "Outstanding Features" you would expect.

- * Master chef kitchen with stone benchtops and premium appliances
- * And island work bench with breakfast bar
- * Reverse ducted air-conditioning
- * Spacious lounge and dining
- * Plantation shutters and ceiling fans throughout
- * Master suite – large bedroom, ensuite and walk in-robe
- * Queen size - 2nd and 3rd bedrooms
- * Double sliding doors to convert 2nd bedroom to a multi-purpose room
- * Cabinet fully fitted laundry room with extra linen storage
- * Alfresco dining and entertaining
- * Security system
- * Solar electricity system
- * Resort facilities
- heated swimming pool
- cinema, gym
- undercover bowling green, with its own sports bar
- tennis and pickleball precinct
- bocce and croquet courts

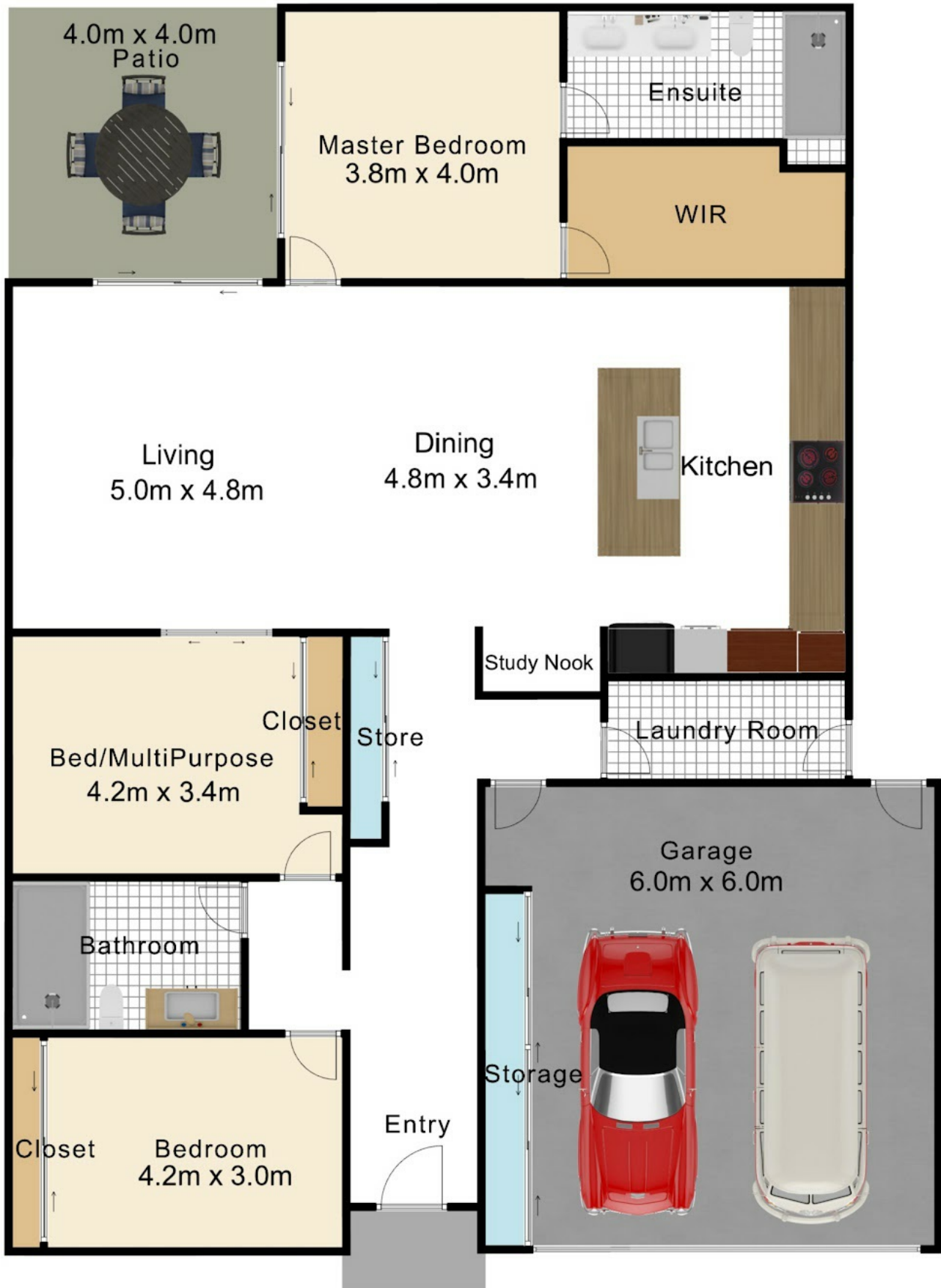
3 BED | 2 BATH | 2 CAR

PRICE:
\$1,250,000

OPEN FOR INSPECTION:
N/A



Elena Stevens
0415230521
elena@esre.com.au
www.esre.com.au



Disclaimer: Please note this floor plan is for marketing purposes and is to be used as a guide only. All dimensions are estimates only and may not be exact measurements.



Elena Stevens
 REAL ESTATE
Powered by @realty

While all care is taken to ensure accuracy, this floorplan should be used as a guide only. Do not use measurements for furniture placement or any renovations to be done in the future.



Elena Stevens
 0415230521
 elena@esre.com.au
 www.esre.com.au