



FOR SALE

SPLIT LEVEL, LAKESIDE LIVING WITH ENDLESS POTENTIAL!!!

Positioned right beside Tuggerah Lakes and the popular lakeside bike path, this unique and versatile home offers flexible living options, disability-friendly features, and a lifestyle location that is hard to beat.

Filled with natural light throughout, the upstairs level features two bedrooms with built-in wardrobes, a modern bathroom complete with a bathtub, and an open plan kitchen, living, and dining area designed for comfortable everyday living. The stylish kitchen includes an island bench with stone benchtops, creating a functional and welcoming central hub of the home.

One of the standout features of the property is the fully functional downstairs independent living area, complete with its own kitchenette, bathroom, shower, laundry, and wheelchair/disability-friendly accessibility. This flexible space is ideal for intergenerational living, guest accommodation, a teenage retreat, or potential additional income opportunities.

Outdoor living is equally impressive, with a massive entertaining deck perfect for hosting family and friends, along with an additional front deck to relax and enjoy the peaceful surrounds.

Comfort and practicality are ensured with split system air conditioning, ceiling fans throughout, and solar panels for added energy efficiency.

Key Features:

- 3 bedrooms, 2 with built-in wardrobes
- Open plan kitchen, living, and dining area
- Kitchen with island bench and stone benchtops
- Independent downstairs accommodation
- Downstairs kitchenette, bathroom, shower, and laundry
- Wheelchair and disability-friendly downstairs access
- Main bathroom upstairs with bathtub
- Massive entertaining deck
- Front deck
- Abundance of natural light throughout
- Split system air conditioning

3 BED | 2 BATH | 3 CAR

PRICE:

Just Listed

OPEN FOR INSPECTION:

May 23 at 3:00pm - 3:30pm

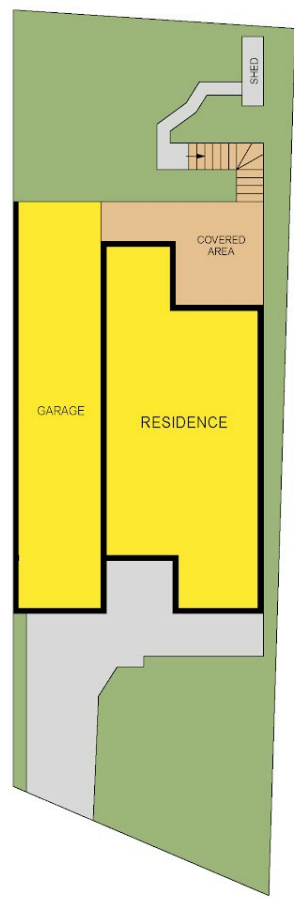
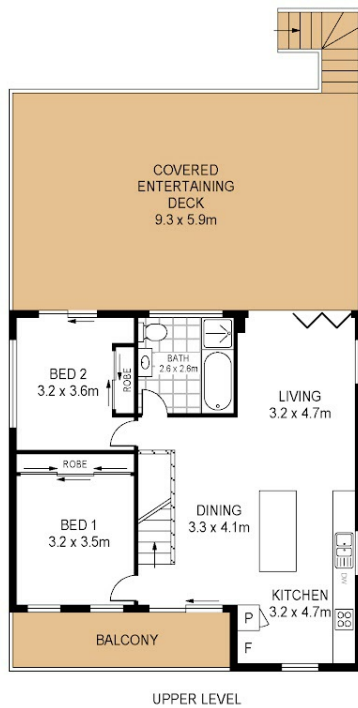
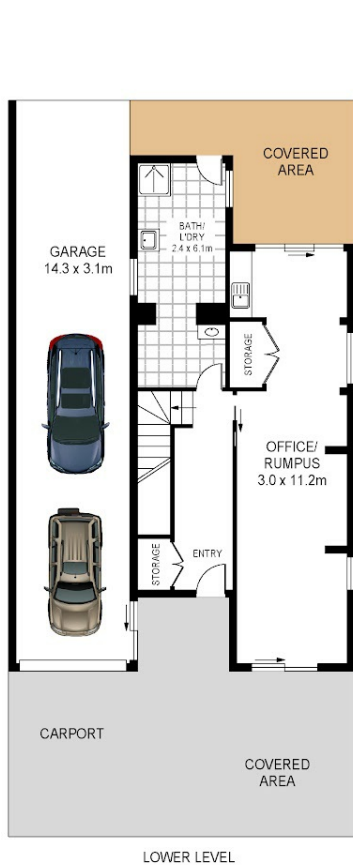


Thomas Twyford

0414002753

tomtwyford@atrealty.com.au

www.atrealty.com.au



308A Tuggerawong Road
Tuggerawong



Total Internal Floor Area: 141 sqm

Scale in metres. Indicative only. Dimensions are approximate. All information contained herein is gathered from sources we believe to be reliable. However we cannot guarantee its accuracy and interested persons should rely on their own enquiries



Disclaimer: Please note this floor plan is for marketing purposes and is to be used as a guide only. All dimensions are estimates only and may not be exact measurements.

Thomas Twyford
0414002753
tomtwyford@atrealty.com.au
www.atrealty.com.au

