



FOR LEASE

FOR RENT: END OF ROW UNIT BEING OFFERED IN AN 55 YEARS AND OVER LIFESTYLE VILLAGE

Step into this modern and comfortable one-bedroom unit, perfectly positioned in the heart of Flinders View, just a minute's walk from Winston Glades Shopping Centre. Available for rent from 28/05/2026, this stylish unit is ideal for those seeking a low-maintenance lifestyle in one of Ipswich's most convenient locations.

IMPORTANT: All applicants must be 55 years of age or older. Refer to inspection times for viewing the property.

NOTE: Rent is \$280 per week until 13 September 2026, then \$380 per week from 14 September 2026 for the remainder of the lease agreement.

This unfurnished unit offers quality living with a modern kitchen, built-in wardrobes for ample storage, and split-system air conditioning in both the lounge and bedroom for year-round comfort. The kitchen comes complete with a dishwasher, fridge, and dining table, while the laundry includes a washing machine, allowing you to bring your own furniture.

The fully fenced property complex ensures privacy and security in a well-maintained environment.

Unit features:

- Good-sized bedroom fits a queen-size bed, and a built-in double wardrobe
- Vertical blinds for privacy
- sliding door with a security door to the rear area
- Clothesline
- Ceiling fans and split-system air conditioning in the lounge and bedroom
- Internal laundry with sink and washing machine
- Spacious bathroom with a large walk-in shower, toilet, and disability rails
- Combined lounge and dining area
- Full-length linen cupboard
- Access to opening the front gate via mobile phone
- Kitchen with plenty of cupboard space, full-length pantry, stainless steel fridge with top freezer, dishwasher, ceramic cooktop, and exhaust fan

1 BED | 1 BATH | 0 CAR

PRICE:
\$280 per week

OPEN FOR INSPECTION:
May 28 at 3:00pm - 3:45pm

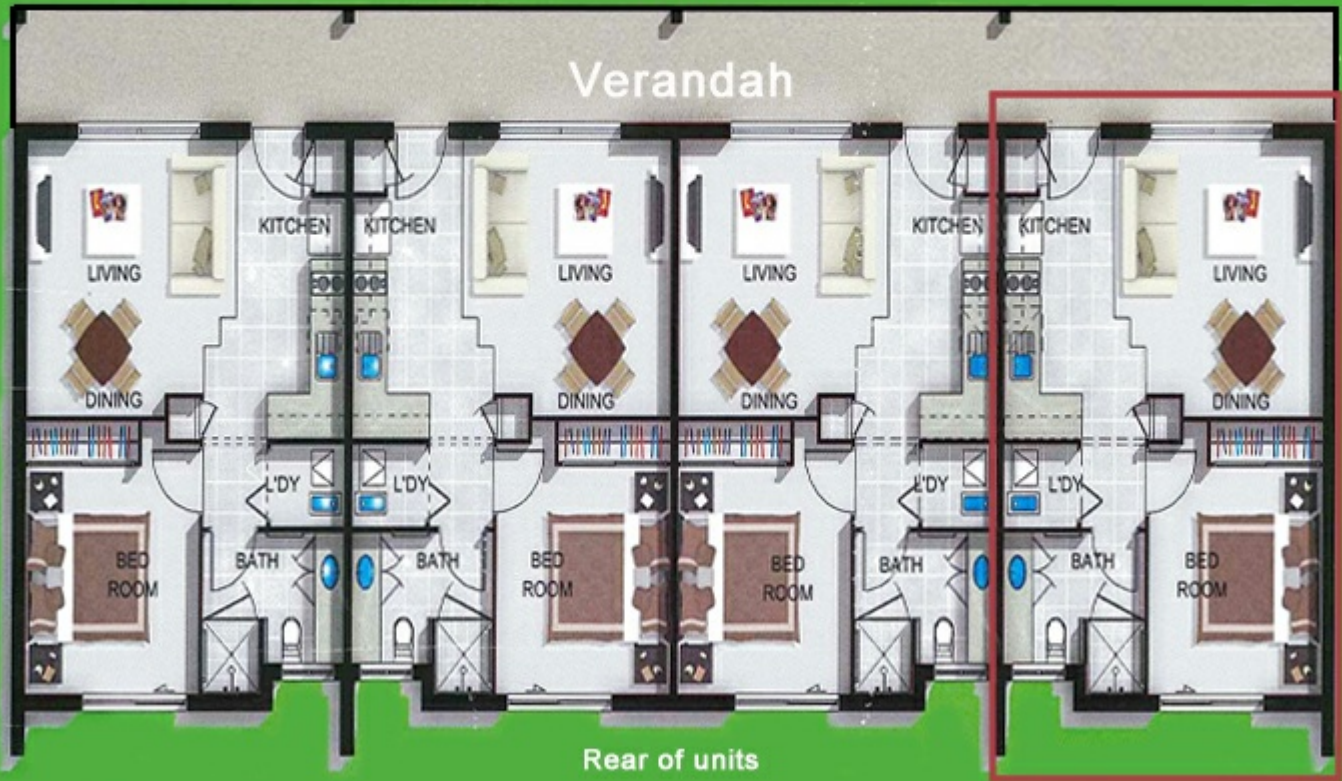


Lynne Wenban
0409008272
lynnewenban@atrealty.com.au
www.atrealty.com.au

FLINDERS VILLIAGE FLOOR PLAN

Unit 18/5 Judith St, Flinders View

Front



Disclaimer: Please note this floor plan is for marketing purposes and is to be used as a guide only. All dimensions are estimates only and may not be exact measurements.