



FOR SALE

THIS SATURDAY OPEN HOME CANCELLED - RESCHEDULED TO SUNDAY 14TH JUNE 10:00AM

Set on a generous 730m² block, this well-presented 3-bedroom home offers the perfect blend of comfort, convenience and investment potential. With a tenant currently in place, it presents an excellent opportunity for investors seeking immediate rental income, while also offering future appeal for owner-occupiers.

The home features three bedrooms, a functional bathroom, and a practical layout designed for easy living. Outside, you'll find a sparkling in-ground swimming pool, creating the perfect space to relax, entertain or enjoy the Queensland lifestyle year-round. The spacious yard provides plenty of room for children, pets, gardening or future improvements.

Conveniently located just minutes from Airlie Beach, schools, shops and local amenities, the property enjoys easy access to everything the Whitsundays has to offer while maintaining a peaceful residential setting.

Whether you're looking to expand your investment portfolio, secure your first home, or purchase a property with future potential, this home represents an outstanding opportunity in a sought-after location.

Key Features:

- 3 bedrooms, 1 bathroom
- 730m² block
- In-ground swimming pool
- Carport accommodation
- Spacious yard
- Tenant currently in place
- Ideal investment opportunity
- Convenient location close to Airlie Beach and local amenities

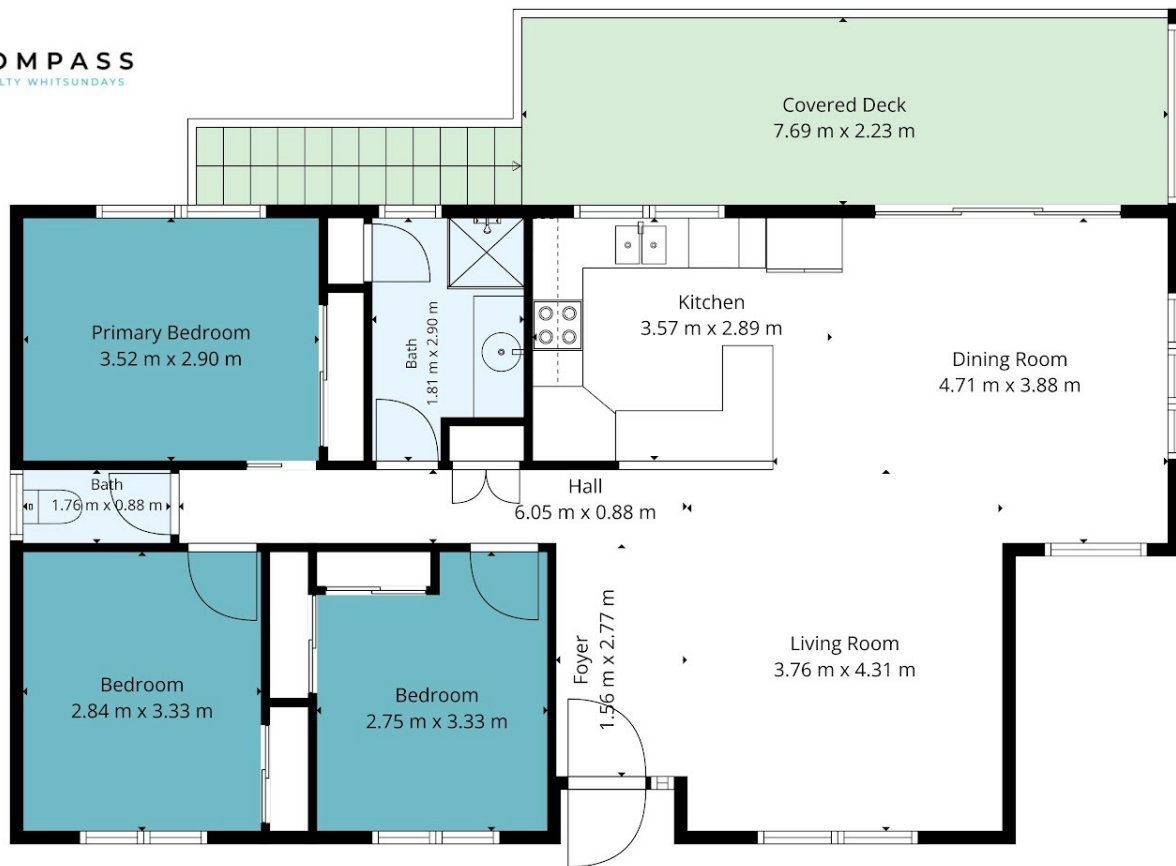
3 BED | 1 BATH | 1 CAR

PRICE:
CONTACT AGENT

OPEN FOR INSPECTION:
Jun 14 at 10:00am - 10:30am
Jun 20 at 10:00am - 10:30am



Kath Barker
0401809697
kathbarker@atrealty.com.au
www.atrealty.com.au



20 Sandpiper Crescent, Jubilee Pocket

TOTAL: 93 m²

Basement: 1 m², 1st floor: 92 m²

EXCLUDED AREAS: GARAGE: 52 m², BASEMENT: 31 m², PATIO: 99 m²,
COVERED PATIO: 56 m², COVERED DECK: 21 m², WALLS: 14 m²

Measurements Deemed Highly Reliable But Not Guaranteed.

Disclaimer: Please note this floor plan is for marketing purposes and is to be used as a guide only. All dimensions are estimates only and may not be exact measurements.