



FOR SALE

SMITHS LANE ...PREMIUM QUALITY HOUSE IN THRIVING CLYDE NORTH!

Step into modern family living at its finest with this stunning 4-bedroom, 2-bathroom house perfectly positioned on Atwell Road in the thriving suburb of Clyde North. This exceptional residence offers the ideal blend of contemporary comfort and practical design, making it the perfect sanctuary for growing families seeking space, security, and convenience in one of Melbourne's most sought-after growth corridors.

Spanning 195 square metres of thoughtfully designed living space on a generous 279 square metre block, this impressive home welcomes you with beautiful floorboards throughout and a seamless flow between indoor and outdoor living areas. The heart of the home features a spacious lounge area perfect for family gatherings, while the modern kitchen comes complete with a dishwasher for effortless entertaining and daily living.

The accommodation wing thoughtfully separates the master suite, complete with ensuite and built-in wardrobes, from the three additional bedrooms that also feature built-in wardrobes for optimal storage. A well-appointed main bathroom serves the family's needs, while an intercom system keeps the household connected throughout.

- Year-round comfort with Refrigerated air conditioning and gas heating
- Advanced security features including alarm system and intercom
- Remote-controlled double garage with secure parking
- Outdoor entertainment area perfect for weekend barbecues
- Fully fenced property ensuring privacy and security for children and pets

Environmental consciousness meets modern convenience with solar hot water and broadband internet connectivity, ensuring this home is as sustainable as it is connected to the digital world. The outdoor entertainment area provides the perfect setting for hosting friends and family, while the fully fenced yard offers peace of mind for families with children or pets.

Clyde North represents one of Melbourne's most dynamic and family-friendly suburbs, perfectly positioned 46 kilometres south-east of the CBD within the City of Casey. This rapidly growing community offers an exceptional lifestyle with its blend of modern conveniences and natural beauty, making it an ideal choice for families seeking the perfect balance between suburban

4 BED | 2 BATH | 2 CAR

PRICE:
\$695,000 - \$760,000

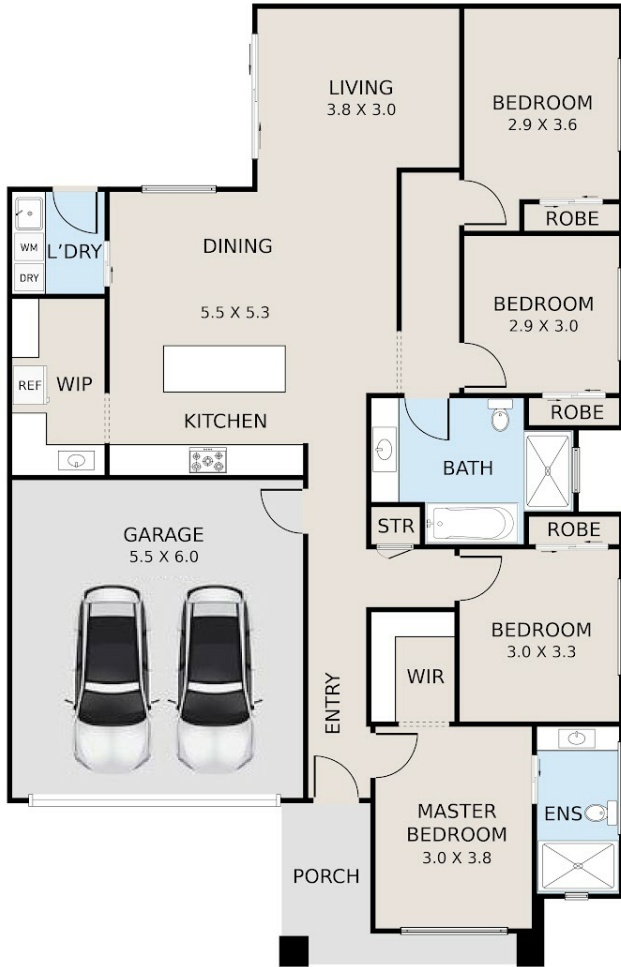
OPEN FOR INSPECTION:
N/A



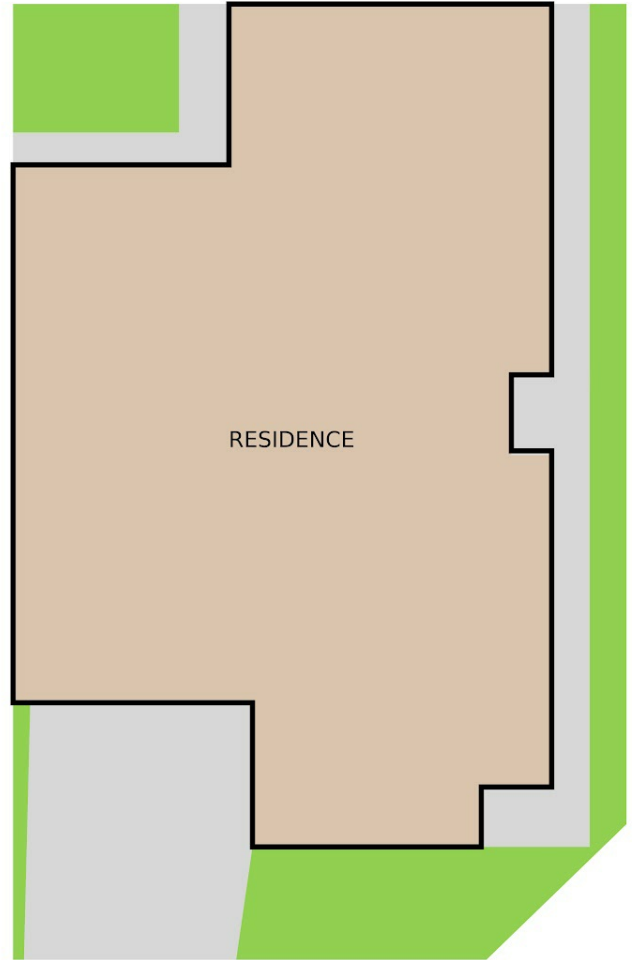
Manpreet Sandhu
0415252061

manpreet@fatehrealstate.com.au
Fateh Real Estate

FLOOR PLAN



SITE PLAN



2 ATWELL ROAD, CLYDE NORTH



FLOOR AND SITE PLAN IS FOR ILLUSTRATIVE PURPOSES ONLY AND NOT TO SCALE. THE VENDOR, AGENCY OR SUPPLIER MAKE NO GUARANTEE, WARRANTY OR REPRESENTATION AS TO THE ACCURACY OF ANY INFORMATION CONTAINED HEREIN AND THE COMPLETENESS OF THE FLOOR PLANNED WILL ACCEPT NO LIABILITY FOR ITS ACCURACY. INTERESTED PARTIES ARE ADVISED TO MAKE THEIR OWN INDEPENDENT ENQUIRIES.

Produced By
The Royal Media

Disclaimer: Please note this floor plan is for marketing purposes and is to be used as a guide only. All dimensions are estimates only and may not be exact measurements.