

## FOR LEASE

### 3 BEDROOM GRANNY FLAT OPEN HOME ON THE 13TH OF JUNE 2026 10.00AM TO 10.30AM

Applications please use link below  
<https://myatrealty.com/v2/properties/339658/listing/78522/applicants/application-form>

Step into modern comfort with this new 3-bedroom granny flat perfectly positioned in Inala's vibrant community. This thoughtfully designed new home offers contemporary living with 3 generous bedrooms, 2 well-appointed bathrooms including an ensuite, and a comfortable lounge area that flows seamlessly throughout the single-level layout.

Climate control comes effortlessly with reverse cycle split system air conditioning ensuring year-round comfort. Built-in wardrobes provide ample storage solutions, while the practical design maximises space and functionality for modern family living.

- privacy and security
- Double carport accommodation for convenient parking
- Low-maintenance new construction requiring minimal upkeep
- Single-level design perfect for accessibility and easy living

This new construction means you'll be the first to call this quality-built house home, with everything fresh and ready for your personal touch.

Inala presents an exceptional lifestyle opportunity, renowned as one of Brisbane's most culturally diverse and vibrant communities. The suburb boasts rich multicultural heritage with the largest Vietnamese Australian community in Queensland, creating a unique tapestry of traditions, cuisine, and community spirit that enriches daily life.

Families will appreciate the exceptional educational opportunities with multiple primary schools including Inala State School, Serviceton South State School, and St Mark's Catholic School all within easy reach. The suburb's commitment to education extends to specialized facilities and TAFE Queensland campus, ensuring learning pathways for all ages.

- Inala Plaza shopping precinct offering major supermarkets, Vietnamese markets, and diverse dining

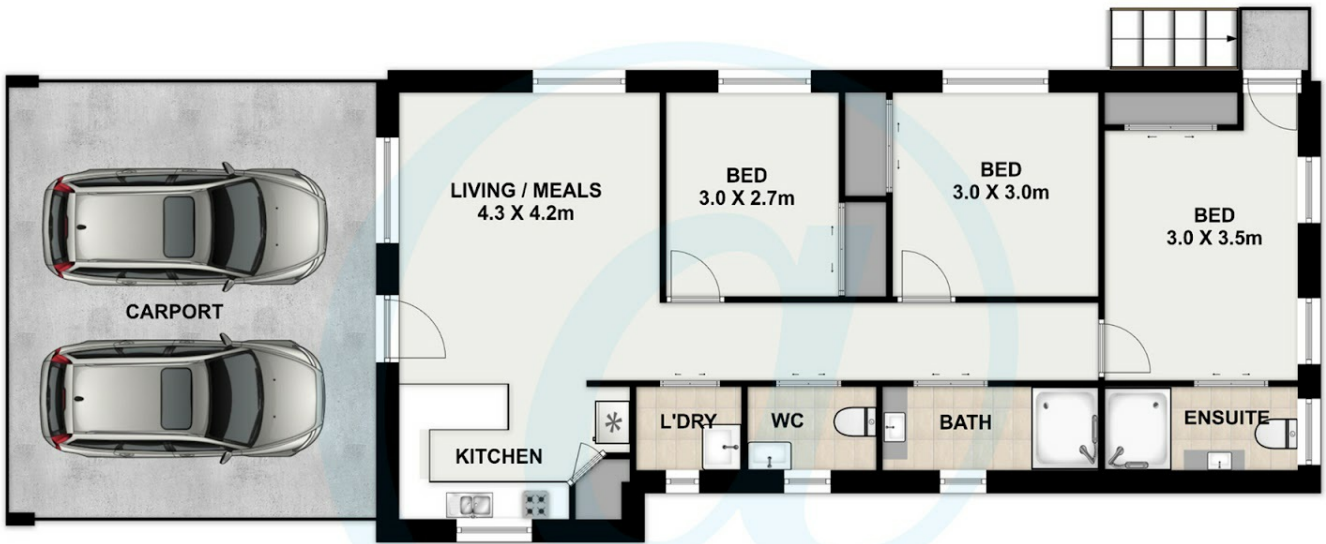
3 BED | 2 BATH | 2 CAR

PRICE:  
\$600 per week

OPEN FOR INSPECTION:  
Jun 13 at 10:00am - 10:30am



**Mark Perera**  
**0417199875**  
markperera@atrealty.com.au  
[www.atrealty.com.au](http://www.atrealty.com.au)



26 Willow Street, **INALA**

 3
  2
  2



This floorplan is not to scale; measurements are indicative and in meters. Exterior elements are not in position. Plans should not be relied on. Interested parties should make and rely on their own enquiries. All other information provided has been collected from reliable sources but cannot be guaranteed for accuracy.

Disclaimer: Please note this floor plan is for marketing purposes and is to be used as a guide only. All dimensions are estimates only and may not be exact measurements.

**Mark Perera**  
 0417199875  
 markperera@atrealty.com.au  
[www.atrealty.com.au](http://www.atrealty.com.au)

