



FOR SALE

SPACIOUS FAMILY HOME WITH RIVER & MOUNTAIN VIEWS

Occupying an elevated position in one of Urunga's most desirable streets, this substantial double-brick residence combines generous proportions, quality construction and picturesque river and mountain views to create an exceptional family home.

Spanning two spacious levels, the home offers four well-appointed bedrooms, light-filled open plan living and dining areas, and beautiful polished hardwood timber floors that add warmth and timeless appeal throughout the upper level. The expansive front verandah provides the perfect place to relax while taking in the tranquil outlook across the river and surrounding mountain ranges.

Downstairs offers incredible flexibility with a massive rumpus room that is ideal as a games room, media room, home office or teenagers' retreat. Adding to its practicality is a convenient second bathroom on the lower level, making it perfect for entertaining, accommodating guests or creating a self-contained space for extended family.

Outside, the large backyard provides plenty of room for children and pets to play, with ample space for gardens, outdoor entertaining or even the addition of a pool (STCA). Completing the package is an oversized double lock-up garage and extensive under-house storage, offering more than enough room for vehicles, tools, hobbies and all the extras.

Solidly built and impeccably maintained, this is a home that delivers the space and versatility modern families desire, while enjoying a peaceful setting just moments from Urunga's town centre, schools, waterways and pristine beaches.

A rare opportunity to secure a quality-built family home with outstanding living space, beautiful outlooks and room for everyone to enjoy.

Disclaimer: While every effort has been made to ensure the accuracy of these particulars, no warranty is given by the vendor or the agent as to their accuracy. Interested parties should not rely on these particulars as representations of fact but must satisfy themselves by inspection or otherwise. Although high standards have been used in preparing this document, no legal

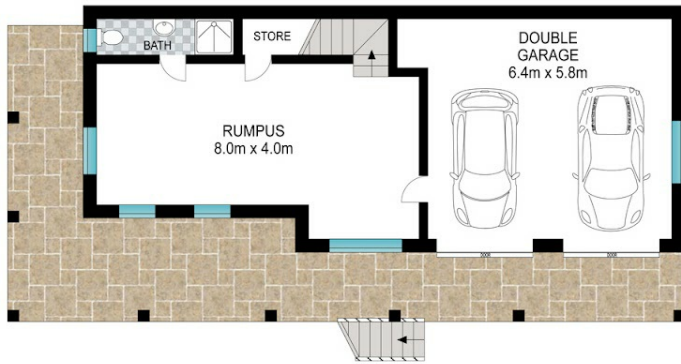
4 BED | 2 BATH | 2 CAR

PRICE:
Just Listed

OPEN FOR INSPECTION:
Jul 4 at 11:00am - 11:30am



Bryce Heward
0423691322
bryce.heward@atrealty.com.au
www.atrealty.com.au



LOWER LEVEL



UPPER LEVEL



Scale in metres. Indicative only. Dimensions are approximate. All information contained herein is gathered from sources we believe to be reliable. However, we cannot guarantee its accuracy and interested persons should rely on their own enquiries.

INT: 200 m²
EXT: 83 m²

40 Rosedale Drive, Urunga



Disclaimer: Please note this floor plan is for marketing purposes and is to be used as a guide only. All dimensions are estimates only and may not be exact measurements.