



FOR SALE

COASTAL CHARM IN THE HEART OF BEACHMERE

Discover the space and lifestyle that make 38 Biggs Avenue a standout Beachmere opportunity.

Positioned on a generous 809sqm block, this charming coastal property offers the perfect blend of convenience, character and lifestyle appeal. Bring your boat, your plans and your vision for the future.

Located across the road from beach access and the popular beachfront park, the home also places you within easy walking distance of Beachmere State School, local shops, cafes and everyday amenities.

Combining old-world charm with a highly sought-after location, this is an exciting opportunity to secure a property within one of Beachmere's most tightly held coastal pockets.

Offering warmth, functionality and future potential, this fully fenced property combines old-world charm with the relaxed coastal lifestyle Beachmere is renowned for. Filled with character, the home showcases beautiful bay windows, soaring high ceilings and timeless timber floorboards that create an inviting sense of space and warmth from the moment you step inside

The generous kitchen offers ample cupboard space, an electric oven and a walk-in pantry, making it both practical and functional for everyday living.

Adding further versatility, the home features a sleepout ideal as a home office, hobby room or guest accommodation, along with a second shower, separate toilet and laundry area.

Outside, the property has side access, and multiple storage sheds, creating space and convenience for a range of buyers. Whether you are looking to move in, invest or further enhance over time, the property presents a fantastic opportunity within a tightly held coastal community.

Property Features:

- Walking distance to waterfront, shops, cafes and local amenities

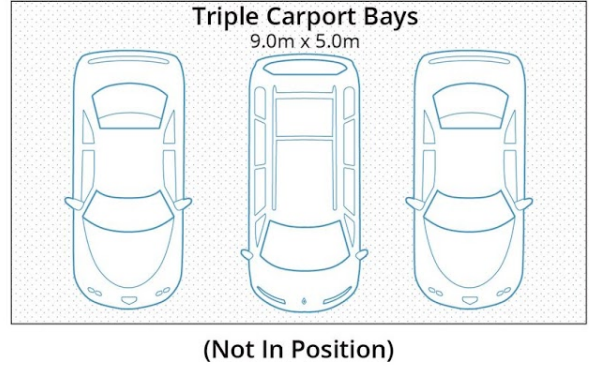
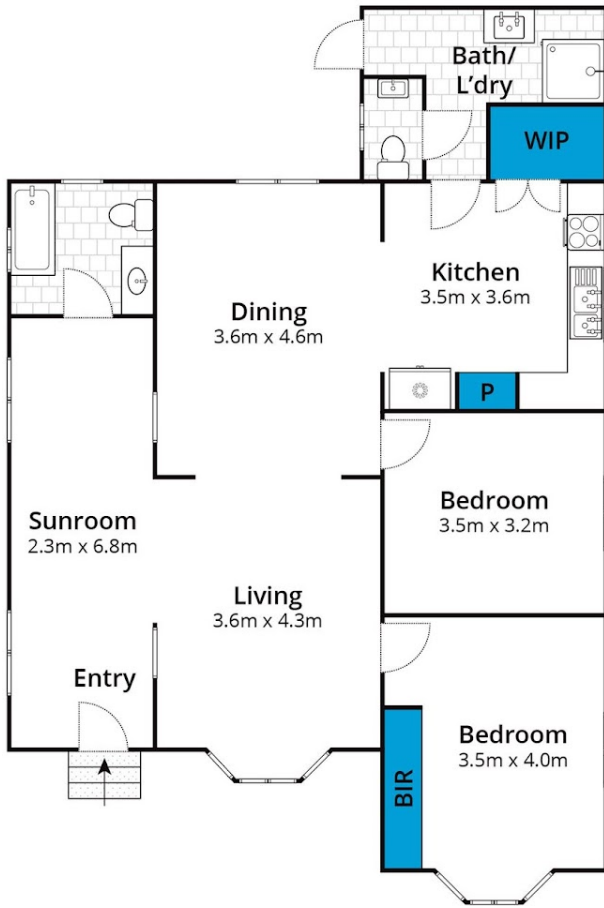
2 BED | 2 BATH | 2 CAR

PRICE:
OFFERS OVER \$879,000

OPEN FOR INSPECTION:
Jun 13 at 9:00am - 9:30am



Selena Turner-Noonan
0438435712
selena@atrealty.com.au
www.atrealty.com.au



Approx House Area 104m²

Whilst bwrn.com.au has made every attempt to ensure the accuracy of the floor plan contained here, measurements are approximate and no responsibility is taken for any error, omission, or mis-statement. This plan is for illustrative purposes only.

38 Biggs Avenue, Beachmere



Disclaimer: Please note this floor plan is for marketing purposes and is to be used as a guide only. All dimensions are estimates only and may not be exact measurements.

Selena Turner-Noonan
0438435712
selena@atrealty.com.au
www.atrealty.com.au

