



# FOR SALE

## GRAND FAMILY LIVING WITH MULTIPLE LIVING ZONES & EXCEPTIONAL ENTERTAINING

Designed for large and growing families, this expansive residence delivers an impressive combination of space, functionality, and effortless indoor-outdoor entertaining.

Downstairs welcomes you with a formal lounge which flows seamlessly into the formal dining area, that leads you through to a huge gourmet kitchen complete with ample storage, island bench, and dishwasher. Multiple living spaces include a generous combined family and meals area with ceiling fan, as well as a large rumpus room perfect for relaxed family living.

A standout feature is the oversized downstairs bedroom with walk-in robe and ensuite access to the downstairs bathroom, making it ideal for elderly parents, guests, or extended family accommodation.

Upstairs showcases stylish floorboards throughout and offers exceptional accommodation, including a double-sized master suite with walk-in robe, private ensuite, and balcony access. Additional features include a spacious teenager's retreat/rumpus with expansive balcony, large master bathroom, dedicated office with built-in cabinetry and ceiling fan, a large walk-in storage area, and oversized bedrooms with mirrored built-in robes.

Step outside to a low-maintenance fully enclosed backyard featuring an expansive undercover entertaining area with built-in BBQ, perfect for hosting family and friends year-round.

Additional features include:

- Triple lock-up garage with remote access
- Drive-through side access
- High ceilings throughout
- Ducted air conditioning
- Downlights throughout
- Tiled flooring downstairs and floorboards upstairs
- Huge laundry with extensive storage

Offering space, comfort, and versatility in every corner, this impressive home is perfectly suited for large families who love to entertain.

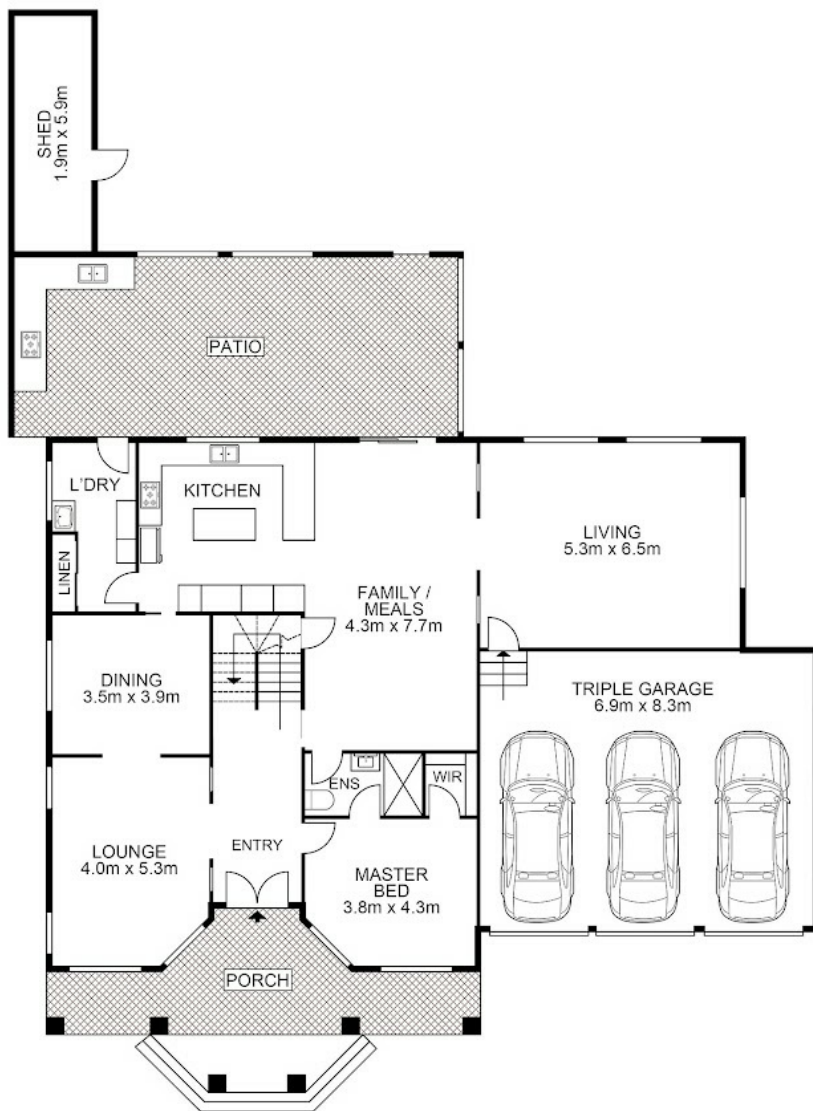
6 BED | 3 BATH | 3 CAR

PRICE:  
Just Listed

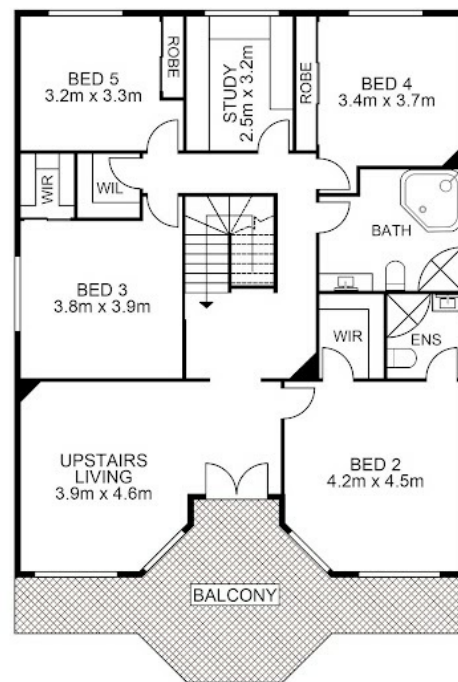
OPEN FOR INSPECTION:  
N/A



**Huss Al Salemi**  
**0411699419**  
huss@atrealty.com.au  
[www.agencycentral.com.au](http://www.agencycentral.com.au)



ENTRY LEVEL



UPPER LEVEL



Disclaimer: Please note this floor plan is for marketing purposes and is to be used as a guide only. All dimensions are estimates only and may not be exact measurements.

10 Glenavon Place, Glen Alpine

Huss Al Salemi • All measurements are approximate • Drawn for marketing purposes only

0411699419

huss@atrealty.com.au

www.agencycentral.com.au

