



# FOR SALE

## MODERN LOW-MAINTENANCE LIVING WITH SPACIOUS OUTDOOR ENTERTAINING

Offering modern comfort, stylish finishes, and low-maintenance living, this beautifully presented 2 bedroom home is perfect for downsizers, first home buyers, or investors seeking quality and convenience in a highly sought-after location.

The home features two spacious bedrooms, both fitted with built-in wardrobes, along with a modern bathroom and the added convenience of a separate washroom with an additional toilet.

Designed for comfortable everyday living, the spacious open plan media, living, and dining area flows seamlessly into the modern kitchen, complete with a dishwasher and ample storage space.

Step outside to the covered courtyard entertaining area featuring outdoor blinds, creating the perfect private space to relax or entertain year-round.

Comfort is ensured throughout the seasons with split system air conditioning and ceiling fans throughout the home.

Additional features include a separate laundry room and an oversized single car garage with extra storage potential.

### Key Features:

- Modern 2 bedroom home
- Bedrooms with built-in wardrobes
- Modern bathroom
- Additional washroom with separate toilet
- Open plan media, living, and dining area
- Modern kitchen with dishwasher
- Separate laundry room
- Oversized single car garage
- Covered courtyard entertaining area with outdoor blinds
- Split system air conditioning
- Ceiling fans throughout the home

2 BED | 1 BATH | 1 CAR

PRICE:  
\$680,000

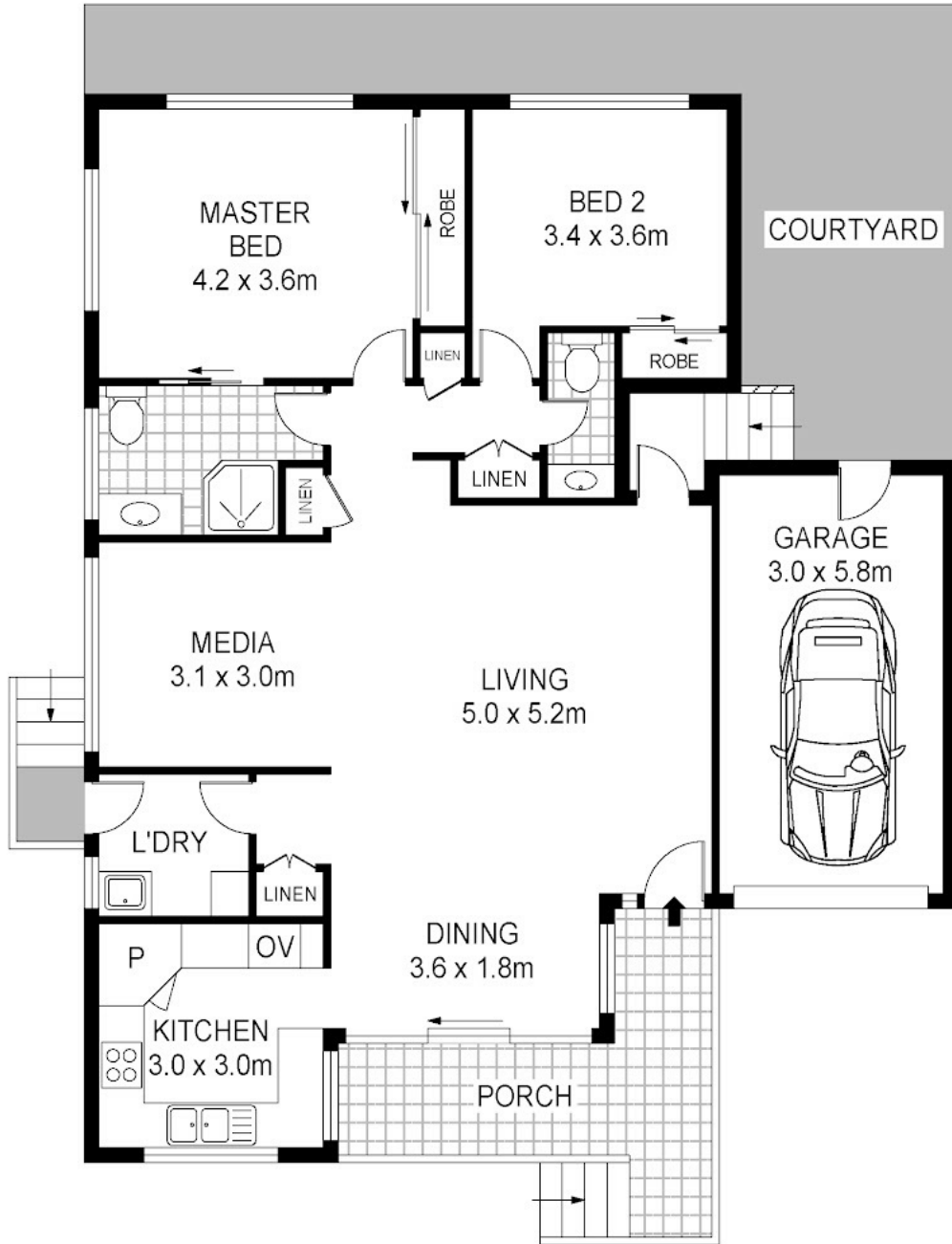
OPEN FOR INSPECTION:  
N/A



**Thomas Twyford**  
**0414002753**

[tomtwyford@atrealty.com.au](mailto:tomtwyford@atrealty.com.au)

[www.atrealty.com.au](http://www.atrealty.com.au)



Disclaimer: Please note this floor plan is for marketing purposes and is to be used as a guide only. All dimensions are estimates only and may not be exact measurements.

104/2 Saliena Avenue  
Lake Munmorah

Thomas Wyford  
0414002753  
tomtwyford@atrealty.com.au  
[www.atrealty.com.au](http://www.atrealty.com.au)



Total Internal Floor Area: 102 sqm

Scale in metres. Indicative only. Dimensions are approximate. All information contained herein is gathered from sources we believe to be reliable. However we cannot guarantee its accuracy and interested persons should rely on their own enquiries.

