



SOLD

NEW HOME LIFESTYLE ... GOING ... GOING ... GONE!!

Presented by local agent Mark Roemermann ...

- * Eat in designer, gourmet kitchen with Art of Cooking Artusi Italian appliances, dishwasher, microwave and quartz benchtops
- * Designer ceramic floor tiles throughout
- * Open plan living, generous, air conditioned lounge with al fresco outlook, perfect for entertaining
- * Generous, private entertainer's courtyard, fully landscaped and pet-friendly
- * Master Bedroom with Air Conditioning, private Juliette balcony, floor to ceiling, spacious mirrored wardrobes, plus designer ensuite complete with frameless glass shower
- * Separate study nook, perfect for homework or small business
- * 6-star energy rating
- * Internal access from remote controlled garage
- * Great rental returns, great tax incentives
- * Future growth
- * Low Strata fees

Maybe you wanted to be the first? You might have missed this one, but each of the other high-quality townhouses have their own features to offer savvy buyers.

Enjoy the benefits of this brand new, beautifully appointed 2 bedroom town home, it's as good as it gets, and represents great value. Modern living, entertainer private, leafy courtyard and so close to Brisbane's CBD, Airport and the Gateway.

Julia Street has the luxury and appointments that one expects from a new build. And talk about location, this boutique complex is just a short walk from Nundah with its village feel, cafes and conveniences. Yes, public transport is just around the corner, coupled with excellent schools and colleges for those important people in your life.

Rarely do properties tick so many boxes. Perfect for couples, young families, empty nesters, investors and first home buyers alike. You simply can't go wrong, it all stacks up.

2 BED | 2 BATH | 0 CAR

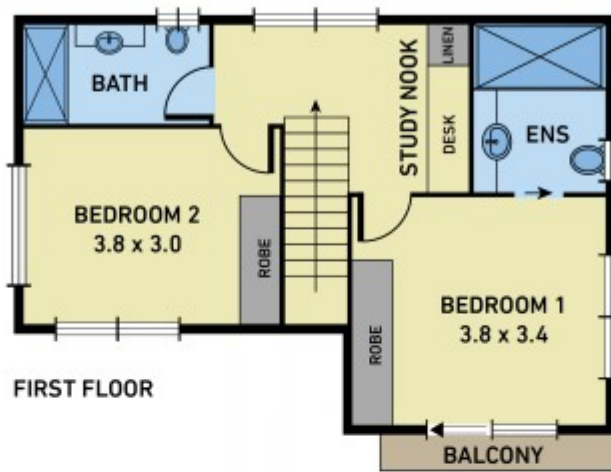
PRICE:
\$500,000

OPEN FOR INSPECTION:
N/A



Mark Roemermann
0413877230
markroemermann@atrealty.com.au
www.atrealty.com.au

2/30 Julia Street, Wavell Heights



Disclaimer: Every precaution has been taken to verify the accuracy of the above details. However, prospective purchasers are advised to make their own enquiries. We do not accept responsibility for any errors or omissions.

Disclaimer: Please note this floor plan is for marketing purposes and is to be used as a guide only. All dimensions are estimates only and may not be exact measurements.