



FOR SALE

EASY LIVING IN PRIME LAKE MUNMORAH LOCATION

Easy Living in a Prime Lake Munmorah Location

Welcome to 25 Woodbridge Crescent, Lake Munmorah a beautifully presented home offering comfort, style and low maintenance living.

Featuring three generous bedrooms, a well appointed bathroom and a single garage with automatic door plus internal access, this home is perfectly suited to first home buyers, downsizers, investors or young families.

Inside, you'll immediately appreciate the warmth of the stunning floorboards that flow throughout the home, complemented by elegant plantation shutters that add both style and privacy. The practical layout offers comfortable living spaces and an easy care design that allows you to spend more time enjoying life and less time on maintenance.

Set on a manageable block in a convenient location close to schools, shops, parks and the lake, this is an outstanding opportunity to secure a move in ready home in one of Lake Munmorah's most sought after pockets.

Features Include:

- 3 spacious bedrooms
- 1 well maintained bathroom + 2 toilets
- Single garage with automatic door
- Beautiful timber style floorboards throughout
- Plantation shutters
- Low maintenance lifestyle
- Convenient family friendly location and desirable Pacific lakes estate community

Whether you're looking to move straight in or add a quality property to your portfolio, this charming home is one not to be missed.

3 BED | 1 BATH | 1 CAR

PRICE:

\$740,000 - \$770,000

OPEN FOR INSPECTION:

N/A

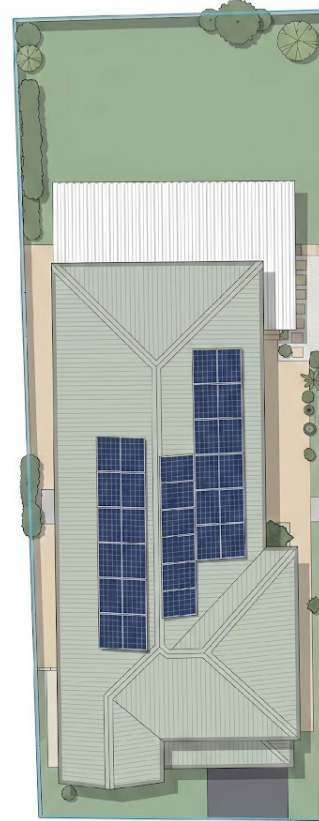
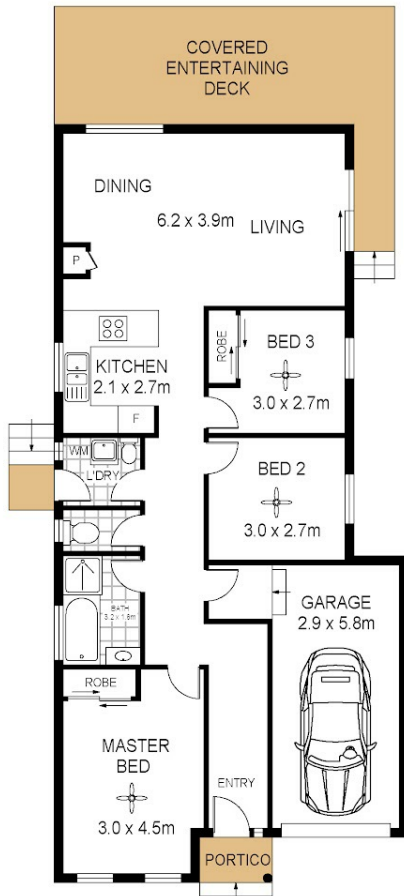


Brendan James

0422851384

brendanjames@atrealty.com.au

www.atrealty.com.au



25 Woodbridge Crescent,
Lake Munmorah

Total Internal Floor Area: 109 sqm

Scale in metres indicative only. Dimensions are approximate. All information contained herein is gathered from sources we believe to be reliable. However we cannot guarantee its accuracy and interested persons should rely on their own enquiries



Disclaimer: Please note this floor plan is for marketing purposes and is to be used as a guide only. All dimensions are estimates only and may not be exact measurements.

Brendan James
0422851384
brendanjames@atrealty.com.au
www.atrealty.com.au

