



FOR SALE

FANTASTIC HOME IN IDEAL LOCATION

15 Leumeah Avenue, Chain Valley Bay

Positioned in a quiet pocket of Chain Valley Bay, this neat and tidy three bedroom home offers comfortable family living with the added bonus of a separate two bedroom relocatable home.

Set on a level, fully fenced block, the property provides flexible living options for extended family, guests, a home business or teenage retreat, all while being just moments from Lake Macquarie.

Features include:

- Three bedroom home with new carpet throughout
- Separate two bedroom relocatable home
- Functional kitchen and living area
- Spacious, level backyard
- split system air conditioning
- Relocatable home included
- updated main bathroom + ensuite
- Fully fenced block
- plenty of off street parking
- Quiet location close to shops, schools and waterfront reserves

A fantastic opportunity for families, investors or those seeking additional space and flexibility.

Disclaimer: While every effort has been made to ensure the accuracy of these particulars, no warranty is given by the vendor or the agent as to their accuracy. Interested parties should not rely on these particulars as representations of fact but must satisfy themselves by inspection or otherwise. Although high standards have been used in preparing this document, no legal responsibility can be accepted for any loss or damage resulting from the content or use of this information. Any photographs show only certain parts of the property as they appeared when taken. Areas, amounts, measurements, distances, and all other numerical information are approximate only. Note: Every care has been taken to verify the accuracy of the details in this advertisement; however, we cannot guarantee its correctness. Prospective purchasers are requested to take necessary action to satisfy themselves with any pertinent matters.

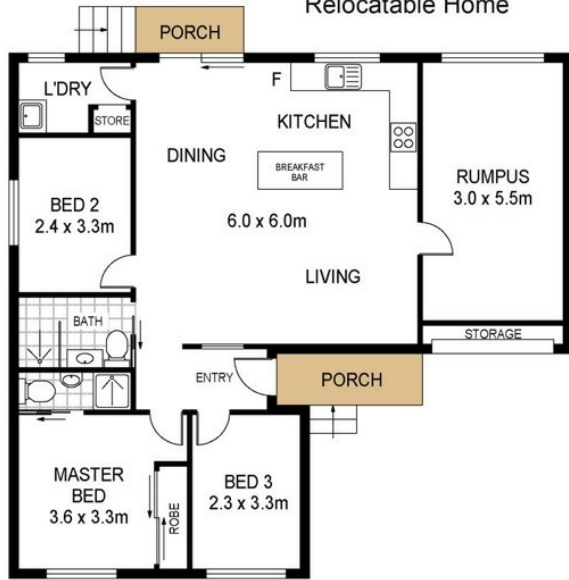
3 BED | 2 BATH | 1 CAR

PRICE:
\$800,000 - \$830,000

OPEN FOR INSPECTION:
N/A



Brendan James
0422851384
brendanjames@atrealty.com.au
www.atrealty.com.au



Total Internal Floor Area: 102 sqm
Flat : 34 sqm

Scale in metres. Indicative only. Dimensions are approximate. All information contained herein is gathered from sources we believe to be reliable. However we cannot guarantee its accuracy and interested persons should rely on their own enquiries



15 Leumeah Avenue,
Chain Valley Bay

Disclaimer: Please note this floor plan is for marketing purposes and is to be used as a guide only. All dimensions are estimates only and may not be exact measurements.

Brendan James
0422851384
brendanjames@atrealty.com.au
www.atrealty.com.au

