



FOR SALE

FAMILY ENTERTAINER WITH WORKSHOP, SWIM SPA & SPACE FOR EVERYONE

Perfectly positioned on a level 608m² parcel in one of Albion Park's most desirable streets, this beautifully presented family residence combines spacious modern living, exceptional outdoor entertaining, and practical extras rarely found in today's market.

Designed with growing families in mind, the home offers four generous bedrooms, including a privately positioned master suite complete with a walk-through wardrobe and ensuite. Multiple living zones provide flexibility for every stage of family life, with a separate media room complementing the expansive open-plan living and dining area at the heart of the home. The stylish kitchen is sure to impress, featuring quality appliances, ample bench space, and a seamless connection to the living areas, making entertaining effortless. Adjoining the kitchen is a thoughtfully designed laundry with convenient internal access to the double remote garage.

Step outside and discover a backyard designed for year-round enjoyment. The covered alfresco entertaining area overlooks a stunning swim spa and deck, creating the perfect setting for family gatherings, summer barbecues, or simply unwinding at the end of the day. With plenty of level lawn remaining, there's ample space for children and pets to play safely. Adding further appeal is the substantial detached workshop measuring approximately 6.3m x 3.5m—ideal for tradies, hobbyists, storage, or a home workshop setup. To top it all off you also have a 13.3Kw Solar System that virtually eliminates your electricity bill.

Set on a flat, easy-care block in a highly sought-after location, you'll enjoy the convenience of being just moments from quality schools, local shopping centres, parks, and public transport. Phone Peter Bullman today for more information.

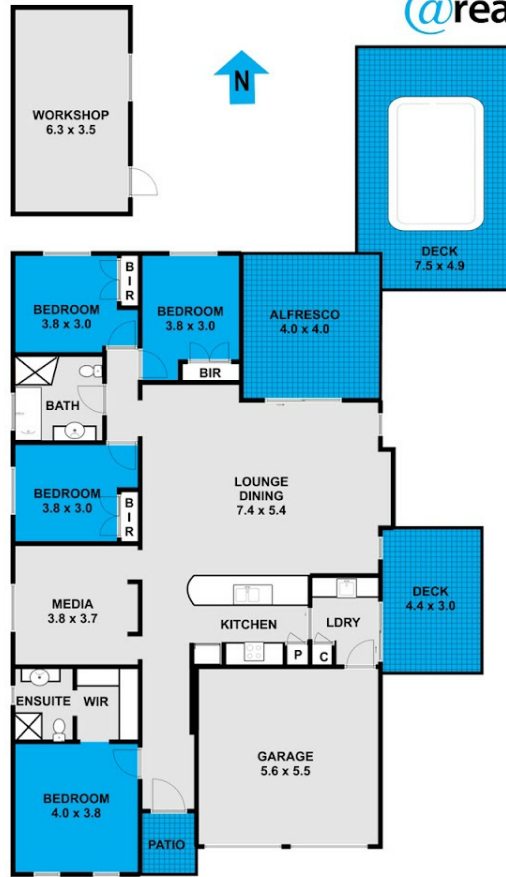
4 BED | 2 BATH | 2 CAR

PRICE:
Contact Agent

OPEN FOR INSPECTION:
Jun 20 at 11:15am - 11:45am



Peter Bullman
0401394394
peterb@atrealty.com.au
www.atrealty.com.au



This floor plan including furniture, fixture measurements and dimensions are approximate and for illustrative purposes only.
@Realty gives no guarantee, warranty or representation as to the accuracy and layout.
All enquiries must be directed to the agent, vendor or party representing this floor plan.

7 Loddon Circuit Albion Park

Disclaimer: Please note this floor plan is for marketing purposes and is to be used as a guide only. All dimensions are estimates only and may not be exact measurements.