



FOR LEASE

10TH FLOOR COASTAL LIVING WITH SPECTACULAR OCEAN & SKYLINE VIEWS \$980 PER WEEK | BOND \$3,920

Positioned on the 10th floor of the highly regarded Wings building, this beautifully presented unfurnished two-bedroom, two-bathroom apartment offers breathtaking ocean views and sweeping Surfers Paradise skyline vistas to the north.

Designed to embrace the very best of coastal living, the spacious open-plan living and dining area flows seamlessly onto a generous wraparound balcony, creating the perfect space to relax, entertain, and enjoy the ever-changing ocean outlook.

Beautiful timber floorboards run throughout the apartment, adding warmth and sophistication while complementing the abundance of natural light and stunning coastal views. The modern kitchen is both stylish and functional, offering ample storage and preparation space for everyday living.

The master suite is a private retreat, complete with a walk-in wardrobe, ensuite bathroom and direct access to the balcony. The second bedroom is generously sized and serviced by a separate bathroom, making the property ideal for professionals, couples or those seeking additional space for guests or a home office.

Additional features include air conditioning to both the living area and master bedroom, a European-style laundry, separate storage area and one secure allocated car space.

Residents of Wings enjoy access to exceptional resort-style facilities including a sparkling swimming pool, spa, full-size tennis court, well-equipped gymnasium and sauna. An on-site restaurant adds further convenience, while the G-Link light rail is located right at your doorstep, providing easy access to Broadbeach, Surfers Paradise and beyond.

Perfectly positioned within walking distance to the beach, cafes, restaurants and entertainment precincts, this is a fantastic opportunity to secure a quality coastal residence in one of the Gold Coast's most convenient locations.

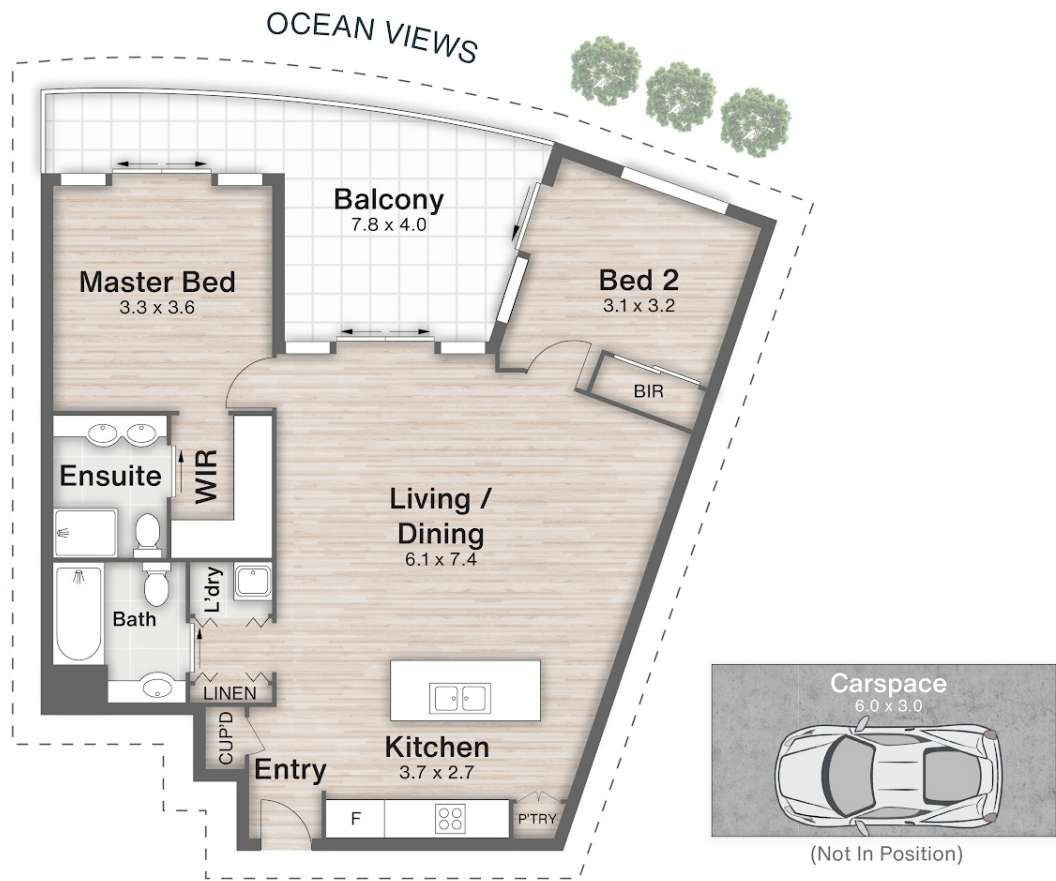
2 BED | 2 BATH | 1 CAR

PRICE:
\$980 per week

OPEN FOR INSPECTION:
N/A



Luella Engelen
0474779450
luella@mandate2.com.au
mandate2.com.au



1006/18 Fern Street **SURFERS PARADISE**

2 | 2 | 1 | 99m²

Mandate
PROPERTIES

All dimensions are approximate; they are subject to errors and inaccuracies and no liability will be accepted. Plans are shown for marketing purposes only.

Disclaimer: Please note this floor plan is for marketing purposes and is to be used as a guide only. All dimensions are estimates only and may not be exact measurements.

Luella Engelen
0474779450
luella@mandate2.com.au
mandate2.com.au

@realty