



FOR SALE

PEACEFUL NORTH-FACING LIVING IN A PRIME PAKENHAM LOCATION!

Nestled in a quiet and convenient location just moments from Princes Highway, this beautifully presented north-facing home offers comfort, space, and low-maintenance living in the heart of Pakenham.

Step inside to a welcoming tiled entrance hallway that flows through to a versatile open-plan study, complete with timber floorboards and Venetian blinds—perfect for working from home or creating a quiet retreat.

Designed for easy living, the home features two generously sized bedrooms with built-in robes, while the spacious master bedroom boasts a walk-in robe and private ensuite. A large family bathroom filled with natural light services the remainder of the home.

At the heart of the property is a spacious kitchen offering ample cupboard and bench space, overlooking a light-filled living and dining area. Fully carpeted for comfort, this inviting space opens through double sliding doors to a low-maintenance concrete backyard and side garden, creating the ideal setting for entertaining family and friends year-round.

Additional features include:

- North-facing orientation
- Quiet location just off Princes Highway
- Open-plan study with floorboards and Venetian blinds
- Spacious kitchen with abundant storage
- Two bedrooms with built-in robes
- Master bedroom with walk-in robe and ensuite
- Large family bathroom with natural light
- Spacious tiled laundry
- Ducted heating and evaporative cooling throughout
- Fully carpeted living areas, hallway, and bedrooms
- Double lock-up garage with internal access
- Low-maintenance outdoor entertaining area

Whether you're a first-home buyer, downsizer, or investor, this well-maintained home presents an outstanding opportunity to secure a quality property in a highly convenient and family-friendly location.

Inspect today and discover the lifestyle on offer at 34 Kimberley Grove, Pakenham.

3 BED | 2 BATH | 2 CAR

PRICE:

\$690,000 - \$740,000

OPEN FOR INSPECTION:

N/A

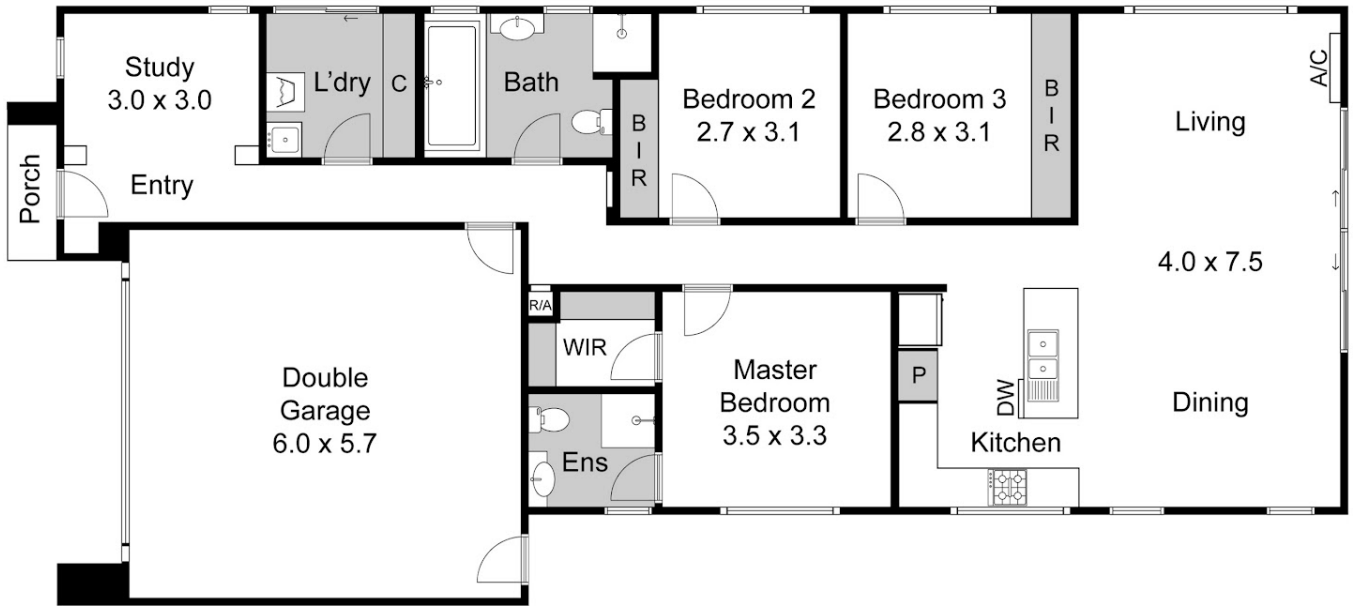


Roger Nissanka

0406271004

roger@atrealty.com.au

rogers-realestate.com.au



This drawing is for illustrative purposes only and while every effort has been made to maintain accuracy, prospective purchasers should check all information

Disclaimer: Please note this floor plan is for marketing purposes and is to be used as a guide only. All dimensions are estimates only and may not be exact measurements.