



FOR SALE

ELEVATED BRICK HOME WITH MOUNTAIN VIEWS AND OUTSTANDING POTENTIAL

Positioned on a near level allotment in a quiet residential street and enjoying picturesque mountain views, this solid brick home offers comfortable living with exciting scope to modernise and add value over time. Being in the one family for over 60 years, this home exhibits all the hallmarks of a very much loved family home.

Set on a generous allotment with a large, level backyard, the property combines classic mid-century character with practical family-friendly spaces. Large windows capture natural light throughout the home, while the elevated position provides a pleasant outlook across the surrounding neighbourhood and distant hills.

Inside, the spacious lounge room is the heart of the home, featuring a cosy wood heater and expansive windows framing the mountain backdrop. The adjoining kitchen and dining area offers plenty of space for family meals and gatherings, with a functional layout ready for future enhancement.

Accommodation includes comfortable bedrooms with built-in storage options and flexibility for families, couples or investors. The home presents in neat condition while offering an excellent opportunity to update and personalise to suit your own style.

Outside, the fully fenced backyard provides ample room for children and pets to play, future landscaping projects, vegetable gardens, sheds or entertaining areas.

Features:

- Solid brick construction
- Elevated position with mountain views
- Spacious light-filled living room
- Wood heater for year-round comfort
- Functional kitchen and dining area
- Generous fully fenced level backyard
- Off-street parking for multiple vehicles
- Scope to renovate and add value
- Convenient location close to schools, shops and services

3 BED | 1 BATH | 0 CAR

PRICE:

Offers over \$595,000

OPEN FOR INSPECTION:

N/A

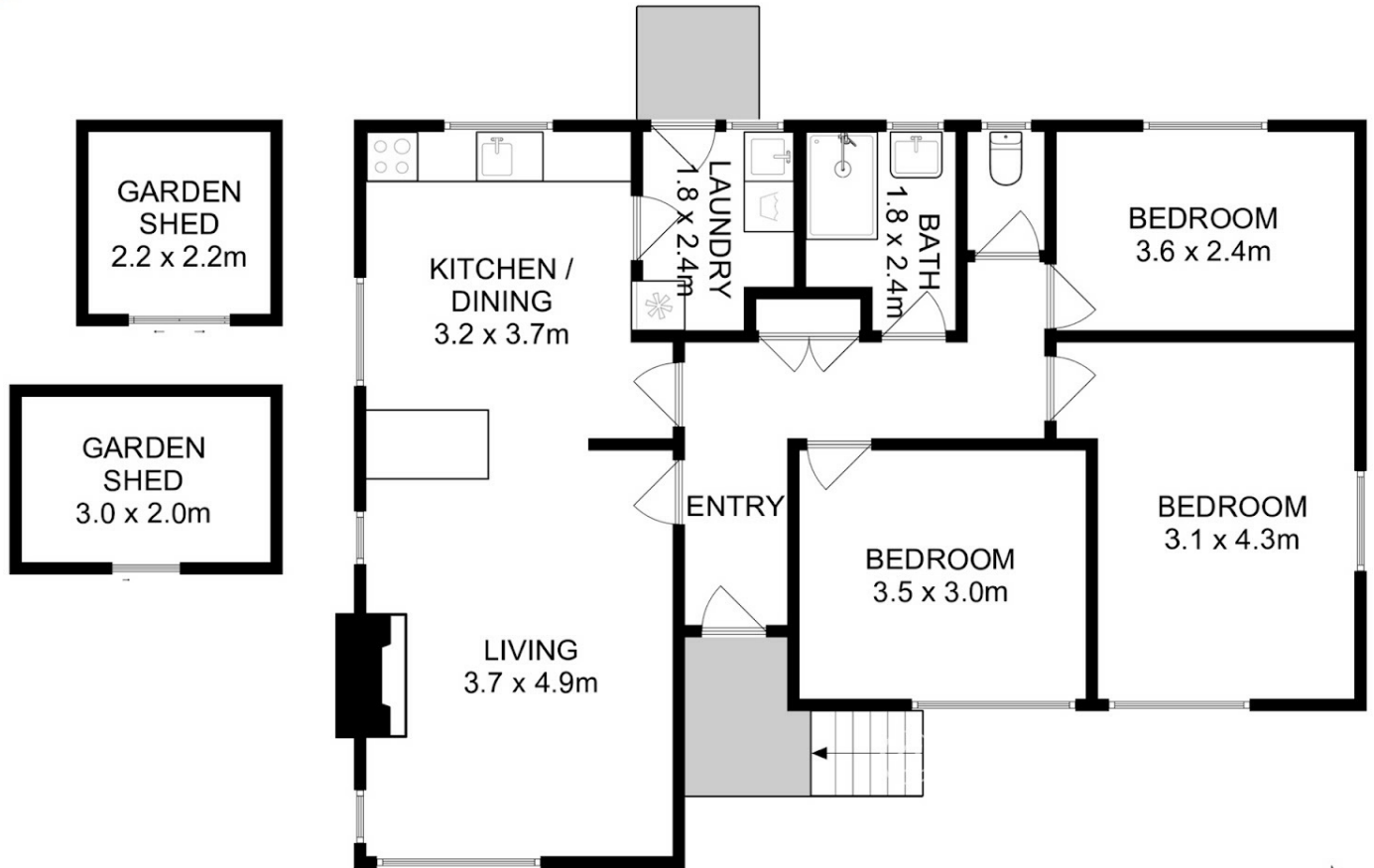


Ben Palmer

0417556731

benpalmer@atrealty.com.au

hobarthomes.com.au



Total Approx. Floor Area : 94 sqm
Total Approx. Outbuilding Area : 11 sqm
Total Approx. Usable Area : 105 sqm

All measurements are internal and approximate.
This plan is a sketch for illustration, not valuation.
Produced by Open2view.com

Disclaimer: Please note this floor plan is for marketing purposes and is to be used as a guide only. All dimensions are estimates only and may not be exact measurements.