

15 HAMPSHIRE CRESCENT, ALEXANDRA HILLS, QLD, 4161



Tafolo Realty @realty

FOR SALE

IMMACULATE PRESENTATION + FULL RENOVATION!

Ladies and gentlemen, we have a fantastic lifestyle and investment opportunity for you here! Situated on a large 827m2 block in a quiet location is this beautifully presented family home. The home includes a spacious living-dining area upstairs, kitchen, bathroom and 3 bedrooms. Tastefully renovated throughout, the kitchen and bathrooms have quality fixtures and fittings. There is also a large & well-appointed deck that captures fresh breezes and views of the area. Downstairs has a rumpus, a study area, a second bathroom, updated laundry + double garage. There is a covered area downstairs, plus a high-clearance drive-through car/boat/caravan port. Air-conditioning units and fans will keep you cool and there's a solar power system on the roof. There is gated side access on the right leading to the rear yard and the 2 large sheds out back. This is perfect for a workshop or storing vehicles, toys, trucks, tools and all your trade supplies. There is plenty of space for kids and pets to play and the lawns are immaculately maintained. Everything is handy, with shopping centres, bus, several schools + parks / walking trails nearby. And you're only 30 mins to Brisbane CBD, 45 mins to Gold Coast & 10 mins to Bayside beaches. But you will need to be fast to secure this home, as homes of this quality are always very popular. So don't miss out! Call now, buy today and enjoy your future. Contact Ben for price guide / viewing.

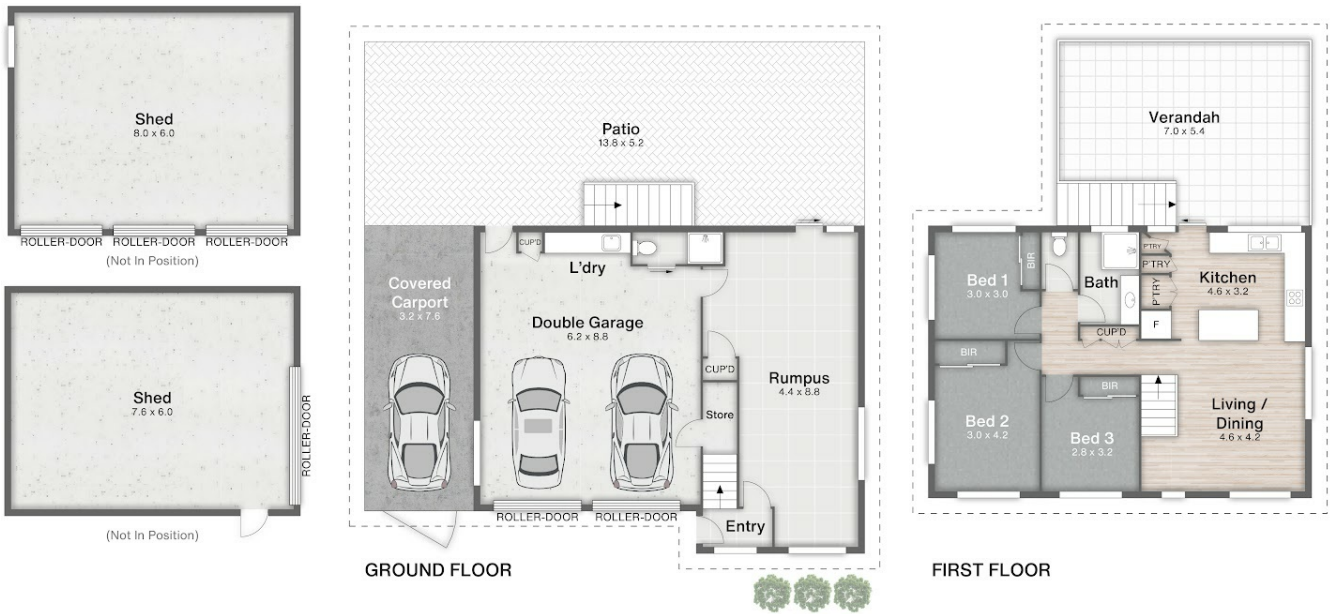
3 BED | 2 BATH | 7 CAR

PRICE:
Please Contact For Price

OPEN FOR INSPECTION:
N/A



Ben Tafolo
0419260719
tafolo@atrealty.com.au
tafolorealty.com.au



15 Hampshire Crescent **ALEXANDRA HILLS**

3 | 2 | 7 | 305m² | 827m²

All dimensions are approximate; they are subject to errors and inaccuracies and no liability will be accepted. Plans are shown for marketing purposes only.

Disclaimer: Please note this floor plan is for marketing purposes and is to be used as a guide only. All dimensions are estimates only and may not be exact measurements.