



FOR LEASE

PROMINENT COMMERCIAL SPACE WITH EXCELLENT EXPOSURE IN PRIME PUTNEY LOCATION

Positioned in a highly sought-after Putney location, this versatile commercial premises presents an outstanding leasing opportunity for a range of business uses (STCA). Offering excellent street exposure and a strong local presence, the property is ideally suited to professional services, boutique retail, wellness, consulting or appointment-based businesses seeking a highly accessible and convenient location.

Property Features:

- Approx. 60sqm
 - Flexible Lease Terms
 - Excellent street exposure with outstanding visibility from passing traffic
 - New floating timber flooring throughout
 - Internal toilet amenities
 - Ceiling fans and split system air conditioning
 - Plumbing provisions allowing for kitchenette installation
 - Single carport plus additional off-street parking
 - Flexible floorplan suitable for a range of commercial uses (STCA)
 - Ideal for professional services, boutique retail, wellness, consulting or appointment-based businesses
 - Convenient access to Victoria Road, Lane Cove Road and Homebush Bay Drive
- Available Now
- All outgoing included

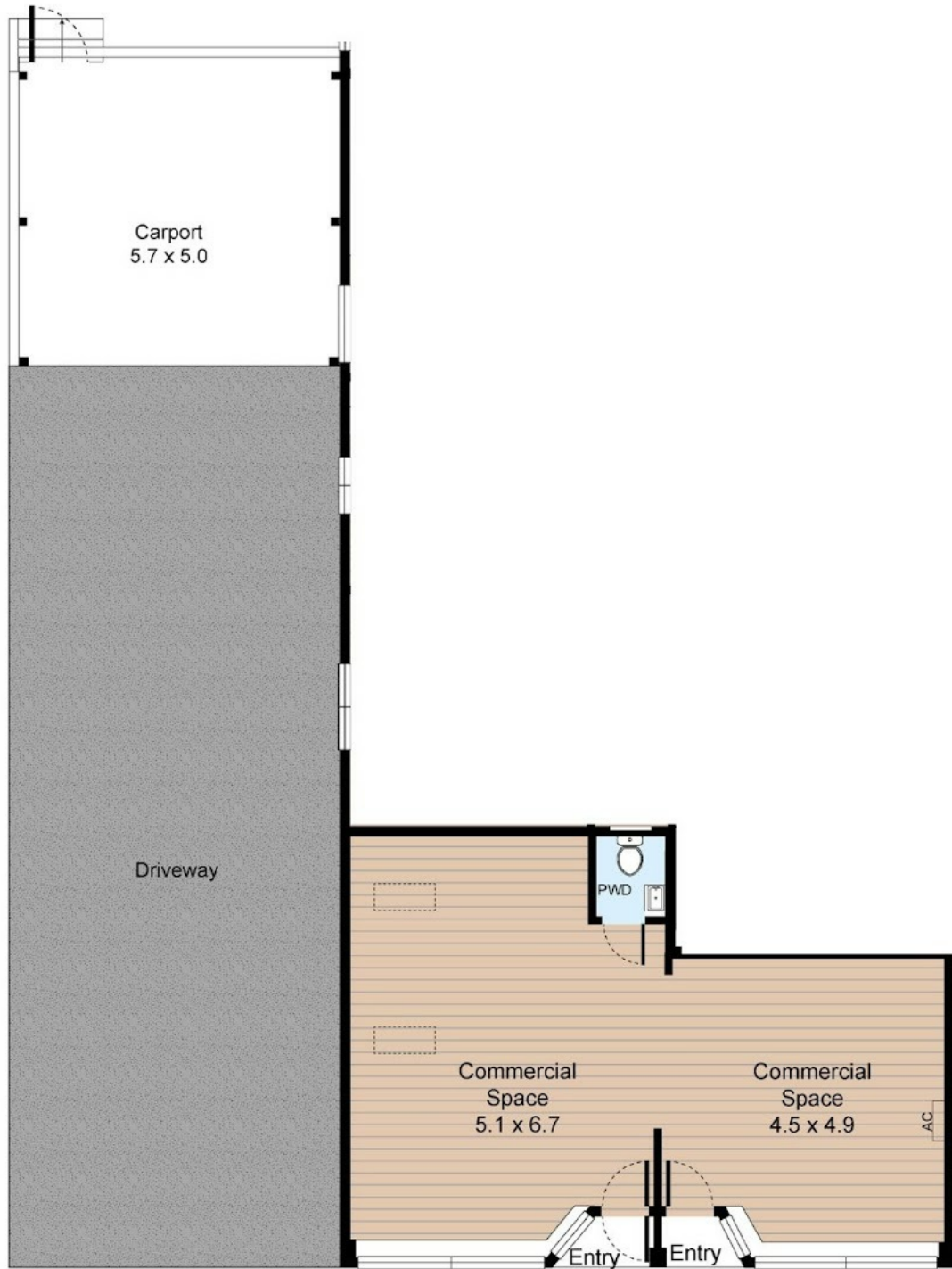
1 BED | 1 BATH | 1 CAR

PRICE:
Competitive rental

OPEN FOR INSPECTION:
N/A



Gavin McCutcheon
0413686969
gavin@atrealty.com.au
buyingsellingrenting.com.au



Disclaimer: Please note this floor plan is for marketing purposes and is to be used as a guide only. All dimensions are estimates only and may not be exact measurements.