



FOR LEASE

A STYLISH & IMMACULATE DUPLEX WITH 2 LIVING AREAS!

** ALL POTENTIAL TENANTS ARE ENCOURAGED TO APPLY FOR THE PROPERTY PRIOR TO VIEWING IT BY USING THE BELOW LINK. THERE IS NO REQUIREMENT TO REGISTER FOR INSPECTIONS**

<https://myatrealty.com/v2/properties/347424/listing/78911/applicants/application-form>

Welcome to 1/30 Pecan Drive, Upper Coomera — a beautifully presented duplex that balances generous proportions with easy, low-maintenance living. Designed around connection and functionality, the home unfolds from a spacious open-plan living and dining area that flows naturally to the well-appointed kitchen before extending out to a private courtyard and grassed yard. Light-filled and inviting, the layout creates a sense of space that is often difficult to find in duplex living while remaining practical for everyday family life.

Upstairs, a versatile second living area provides valuable flexibility, offering the perfect space for a children's retreat, media room, home office or additional lounge. Four well-proportioned bedrooms provide comfortable accommodation, including a spacious master suite complete with its own ensuite. Thoughtfully configured to adapt to the changing needs of modern living, this is a home that offers both room to grow and the simplicity of a low-maintenance lifestyle.

Property features:

- Expansive open-plan living and dining area filled with natural light;
- Modern kitchen featuring quality appliances, generous bench space and breakfast bar seating;
- Flexible second living area positioned on the upper level;
- Spacious master suite complete with private ensuite and walk-in robe;
- Three additional well-proportioned bedrooms;
- Ducted air conditioning throughout for year-round comfort;
- Private courtyard and low-maintenance grassed yard;
- Contemporary main bathroom;
- A conveniently located powder room on the lower level;
- A secure double garage with internal access and laundry; and
- A fully fenced private backyard.

4 BED | 2 BATH | 2 CAR

PRICE:
\$850 per week

OPEN FOR INSPECTION:
N/A

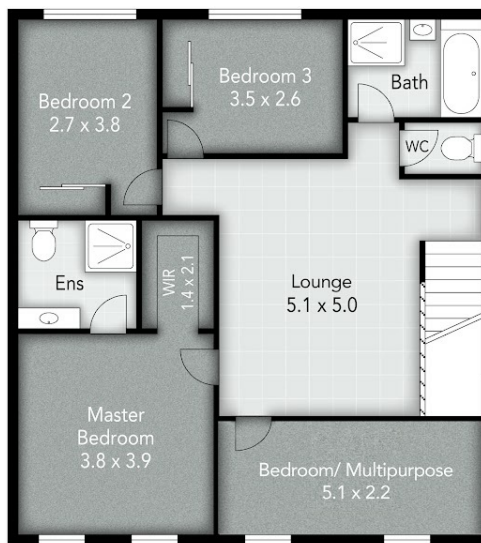


Ethan McCann
0481454400

ethan.mccann@atrealty.com.au
mccannperkinsrealestate.com.au



Ground Floor



First Floor

1 / 30 Pecan Drive
UPPER COOMERA

4 Bed

2 Bath

2 Car

Internal: 188 m²

External: 4 m²

Total: 192 m²

This is not a legal document. All measurements and images are for illustrative purposes only. Floor plans are intended to give a general indication of the proposed layout only and should only be used as such by any prospective buyer

imagescollab.

Disclaimer: Please note this floor plan is for marketing purposes and is to be used as a guide only. All dimensions are estimates only and may not be exact measurements.