



# FOR SALE

## SPACIOUS FAMILY LIVING WITH MULTIPLE ENTERTAINING AREAS!

Positioned in a convenient and family-friendly pocket of San Remo, 10 Kallaroo Road presents a fantastic opportunity to secure a spacious home offering flexibility, comfort and plenty of room for the growing family.

Designed across a practical split-level floorplan, the home boasts four well-appointed bedrooms, all complete with built-in robes, including a private master retreat with ensuite. Multiple living zones, including a generous sunroom and open-plan living and dining areas, provide plenty of space for the whole family to relax and unwind.

The home seamlessly connects to two covered outdoor entertaining areas, creating the perfect setting for weekend BBQs, family gatherings or simply enjoying the peaceful surrounds. With air conditioning, ceiling fans throughout and a functional layout designed for everyday living, this home delivers both comfort and convenience.

### Key Features:

- 4 spacious bedrooms with built-in robes
- Master bedroom with private ensuite
- 1 main bathroom
- Multiple living and entertaining areas
- Generous sunroom
- Open-plan living and dining spaces
- Two covered outdoor entertaining decks
- Air conditioning
- Ceiling fans throughout
- Single lock-up garage
- Family-friendly split-level floorplan

### Location Highlights:

- Close to local schools, shops and public transport
- Easy access to the M1 Motorway
- Minutes to Lake Munmorah and local boat ramps
- Short drive to pristine Central Coast beaches

4 BED | 2 BATH | 1 CAR

### PRICE:

Price Guide \$850,000

### OPEN FOR INSPECTION:

Jun 20 at 11:00am - 11:30am

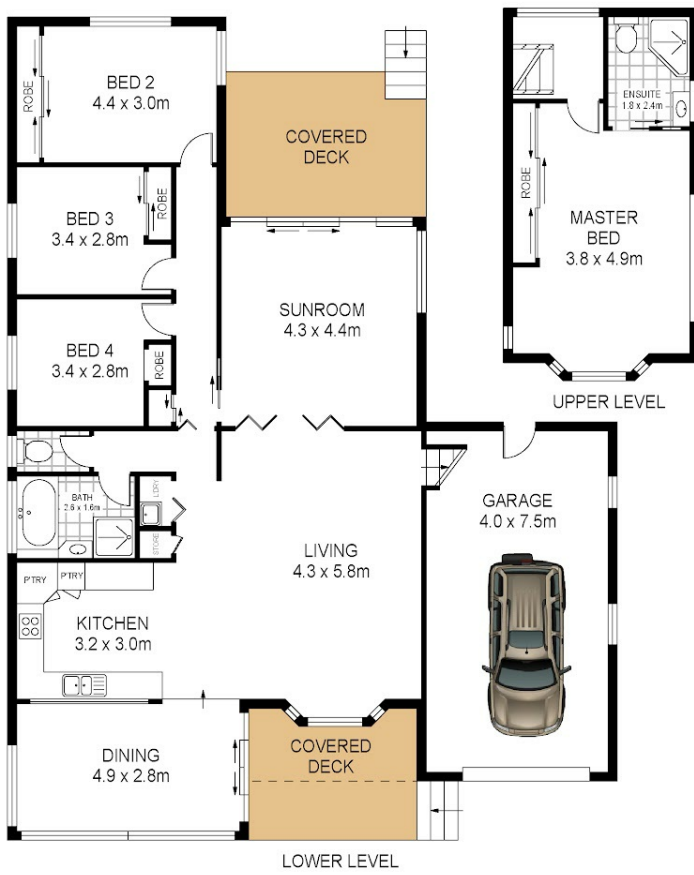


**Thomas Twyford**

**0414002753**

tomtwyford@atrealty.com.au

[www.atrealty.com.au](http://www.atrealty.com.au)



10 Kallaroo Road  
San Remo



Total Internal Floor Area: 156 sqm

Scale in metres. Indicative only. Dimensions are approximate. All information contained herein is gathered from sources we believe to be reliable. However we cannot guarantee its accuracy and interested persons should rely on their own enquiries



Disclaimer: Please note this floor plan is for marketing purposes and is to be used as a guide only. All dimensions are estimates only and may not be exact measurements.

Thomas Twyford  
0414002753  
tomtwyford@atrealty.com.au  
[www.atrealty.com.au](http://www.atrealty.com.au)

