



VIRTUALLY STAGE



FOR SALE

ELEVATED VIEWS, PRIME LOCATION, ULTIMATE CONVENIENCE

Positioned in one of Darwin's most desirable lifestyle locations, this light-filled two-bedroom apartment at 15/139 Smith Street, Larrakeyah offers the perfect balance of comfort, convenience, and low-maintenance living. With elevated views, modern inclusions, and a practical layout, it is an excellent opportunity for owner-occupiers and investors alike.

Nestled between Cullen Bay and the Esplanade, this apartment places you within easy reach of cafés, restaurants, public transport, parks, and the Darwin CBD. Enjoy a relaxed coastal lifestyle while remaining connected to everything the city has to offer.

Property Highlights:

- Top-floor apartment
- Two well-sized bedrooms with built-in cupboards and included bedframes (optional)
- Bright open-plan living and dining area filled with natural light
- Modern kitchen featuring a dishwasher, ample cabinetry, and sizable fridge included
- Private balcony with elevated views, perfect for relaxing or entertaining
- Air conditioning throughout for year-round comfort
- Secure complex in a highly sought-after location
- One onsite car park included, helping avoid costly CBD parking fees
- Excellent storage throughout the apartment
- Convenient access to public transport, shops, cafés, parks, Cullen Bay, and the Esplanade

Whether you are searching for your next home, a city-fringe retreat, or a smart investment in a premium location, this well-presented apartment delivers outstanding value and lifestyle appeal.

Additional Information:

- Year Built: 1986
- Current Rent: \$650 per week until 06/08/2026
- Rental Estimate: \$670 - \$680 per week
- Body Corp Manager: Whittles
- Total Body Corporate Fees (approx.): \$1440 per quarter
- Darwin City Council Rates (approx.): \$1,800 per year

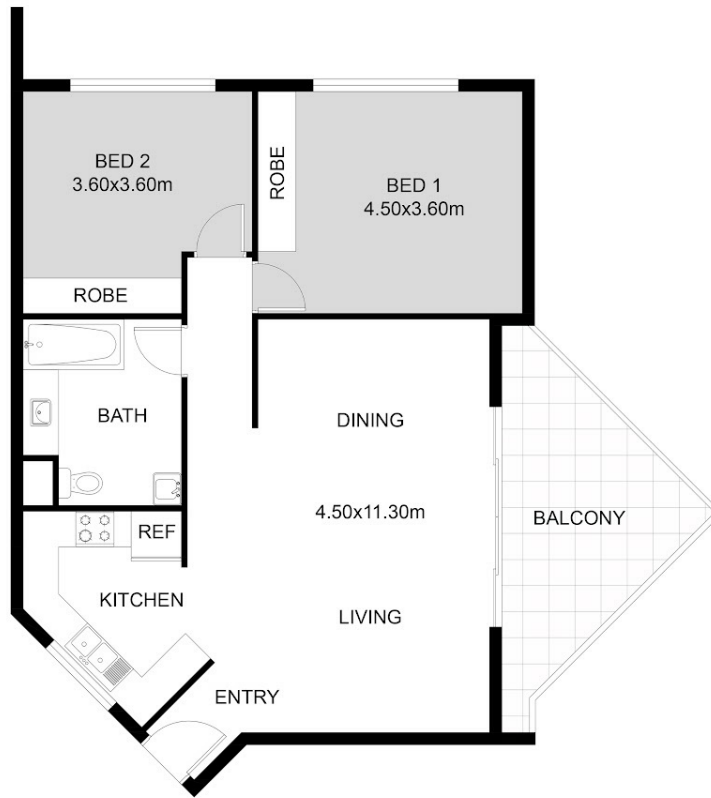
2 BED | 1 BATH | 1 CAR

PRICE:
\$449,000

OPEN FOR INSPECTION:
N/A



Nicole Wheeler
0417508800
nicolewheeler@atrealty.com.au
www.atrealty.com.au



FLOOR PLAN

This floor plan including furniture, fixture measurements and dimensions are approximate and for illustrative purposes only. BoxBrownie.com gives no guarantee, warranty or representation as to the accuracy and layout. All enquiries must be directed to the agent, vendor or party representing this floor plan.

15/139 Smith Street, Larrakeyah, NT 0820

Disclaimer: Please note this floor plan is for marketing purposes and is to be used as a guide only. All dimensions are estimates only and may not be exact measurements.