



FOR SALE

RELAXED OVER-50S LIVING WITH SOLAR SAVINGS & EVERYDAY COMFORT!

Nestled within a peaceful and welcoming over-50s community, 10/750 Pacific Highway, Lake Munmorah presents an outstanding opportunity to embrace a low-maintenance lifestyle without compromising on comfort or convenience.

Beautifully presented and thoughtfully designed, this charming residence offers three generously sized bedrooms and a practical floorplan that caters perfectly to downsizers seeking an easy-care home in a friendly village setting. The light-filled living and dining area creates a warm and inviting atmosphere, while air conditioning ensures year-round comfort no matter the season.

Positioned within a well-maintained retirement village, residents can enjoy the benefits of a peaceful community environment while remaining close to local shops, medical facilities, public transport and the beautiful lakes and beaches that make the Central Coast such a desirable place to call home.

Key Features:

- 3 generously sized bedrooms
- 1 well-appointed bathroom
- Light-filled living and dining area
- Air conditioning for year-round comfort
- Solar panels for reduced energy costs
- Low-maintenance floorplan ideal for downsizers
- Located within a peaceful and friendly over-50s community
- Easy-care lifestyle in a convenient location

Location Highlights:

- Minutes to local shopping centres and everyday amenities
- Close to medical facilities and public transport options
- Short drive to Lake Munmorah and local walking trails
- Easy access to pristine Central Coast beaches
- Convenient access to the M1 Motorway for travel to Sydney or Newcastle

An exceptional opportunity to secure an affordable and comfortable home within a sought-after

3 BED | 1 BATH | 1 CAR

PRICE:

Price Guide \$600,000

OPEN FOR INSPECTION:

N/A

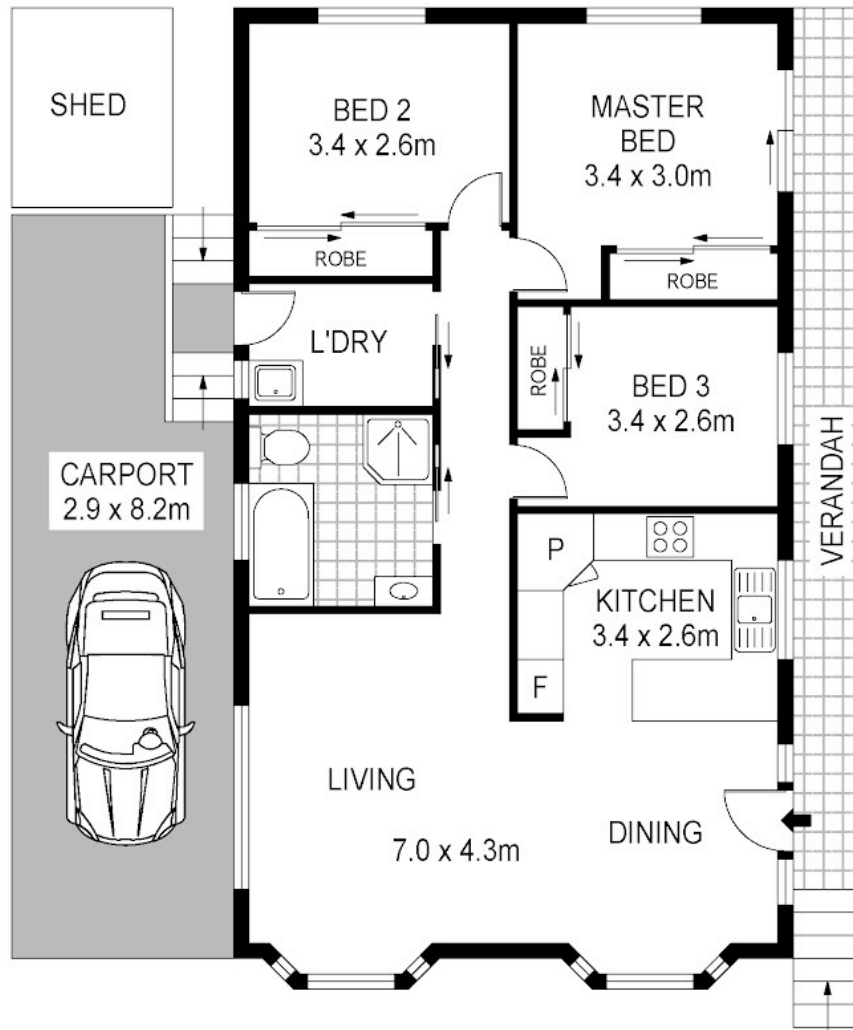


Thomas Twyford

0414002753

tomtwyford@atrealty.com.au

www.atrealty.com.au



Disclaimer: Please note this floor plan is for marketing purposes and is to be used as a guide only. All dimensions are estimates only and may not be exact measurements.

10/750 Pacific Highway
Lake Munmorah

Thomas Twyford
0414002753
tomtwyford@atrealty.com.au
www.atrealty.com.au

Total Internal Floor Area: 84 sqm

Scale in metres. Indicative only. Dimensions are approximate. All information contained herein is gathered from sources we believe to be reliable. However we cannot guarantee its accuracy and interested persons should rely on their own enquiries.

