



FOR SALE

OUTSTANDING FAMILY ENTERTAINER IN PRESTIGE ESTATE

Embodying an ambiance of relaxed sophistication, this outstanding modern home delivers a grand design incorporating spectacular indoor/outdoor entertaining areas highlighted with a stunning poolside cabana. Elegantly poised on a substantial 905sqm block, the home displays a flexible floorplan with capacious living zones and is perfect for larger or extended families. Ideally set in a quiet cul-de-sac in the prestigious Balintore Drive Estate, it's close to Castle Towers, the Metro and quality schools.

- Vast open plan living/dining room with warm hardwood floors
- Effortless flow to full width undercover entertaining terrace
- Generous distinct rumpus room and cosy upper level TV room
- Expanse of lawns for children to play and private backyard
- Gorgeous gas heated salt water pool offers sandstone surrounds
- Oversized deluxe pool cabana complete with fans and lighting
- Gourmet Caesarstone and gas kitchen hosts wide Euromaid oven
- Kitchen has butlers' pantry, glass splashback and breakfast bar
- Generous bedrooms, home office/6th bedroom and built-in robes
- Main has barn style door to walk-in robe with dressing table
- Ensuite features dual showers, elegant family spa bathroom
- Full modern lower rain shower bathroom and updated laundry
- Ducted air conditioning, gas heating points and solar panels
- Double garage and double carport, room for 6 cars plus caravan
- Close to cafés, restaurants, city buses and Knightsbridge shops
- Castle Hill High and Samuel Gilbert Public School catchment
- Close to Oakhill College, private schools and Heritage Park
- Easy access to Showground Metro and Fred Caterson Reserve
- Blissfully peaceful location, surrounded by luxury residences

6 BED | 3 BATH | 4 CAR

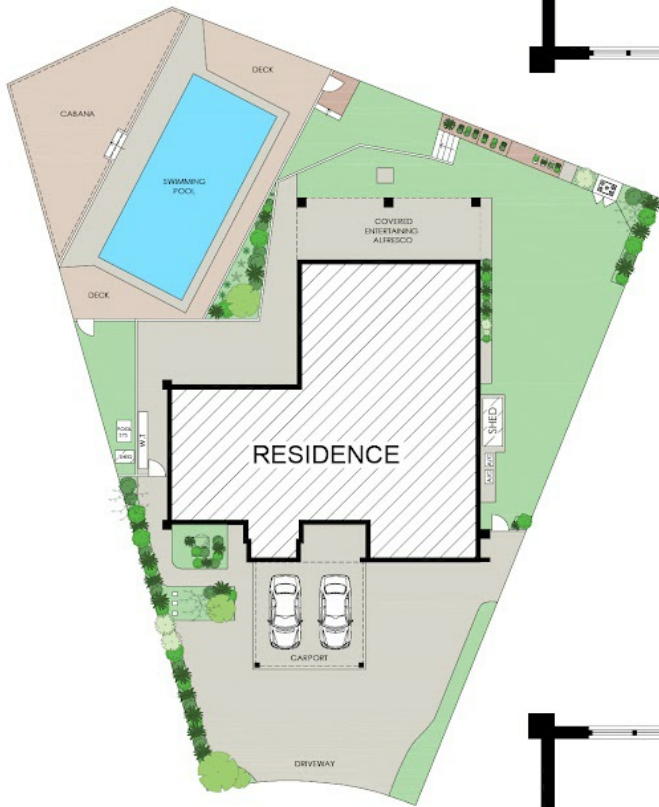
PRICE:
Contact Agent

OPEN FOR INSPECTION:
N/A

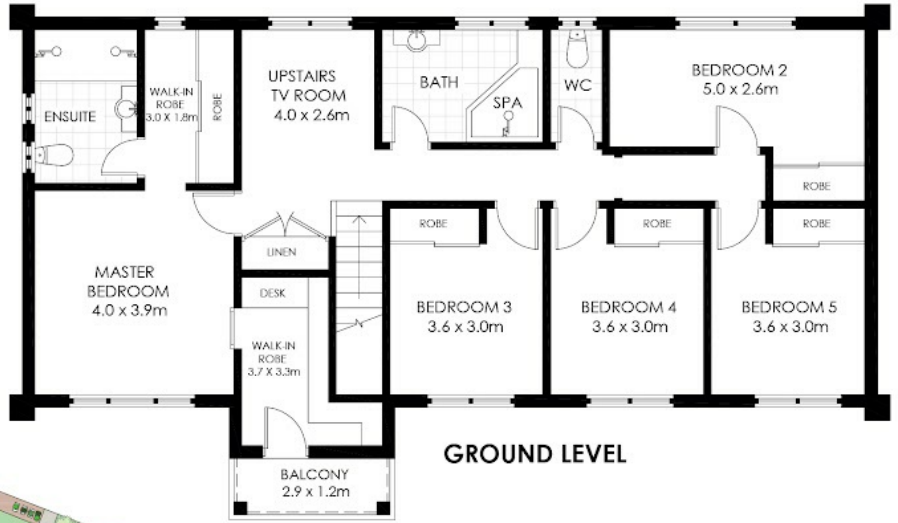


David Choy
0411196328
davidchoy@hillsprestige.com.au
www.hillsprestige.com.au

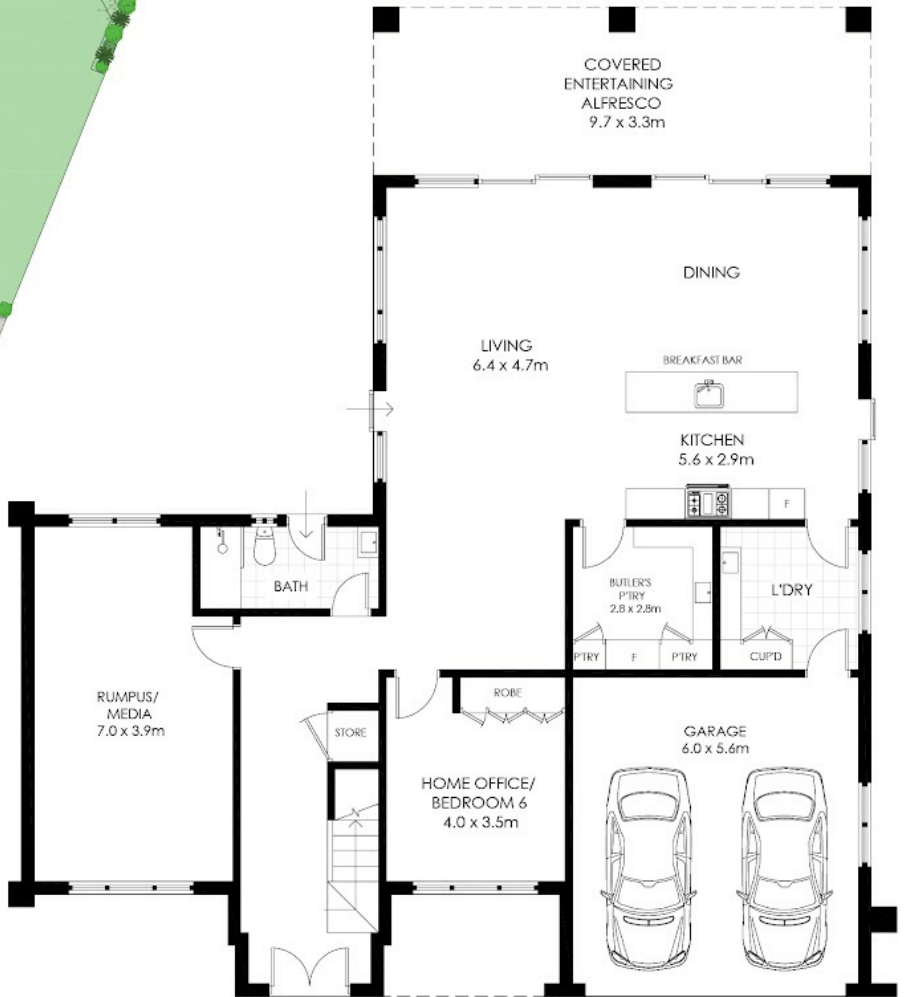
DISCLAIMER: All dimensions are approximate and for illustrative purposes. Interested parties should rely on their own enquiries. Floor plan created by Onebox Media.



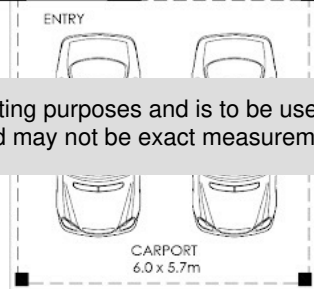
SITE PLAN (NOT TO SCALE)



GROUND LEVEL



GROUND LEVEL



Disclaimer: Please note this floor plan is for marketing purposes and is to be used as a guide only. All dimensions are estimates only and may not be exact measurements.